

Canadian Iris Society

cis newsletter

Spring 2016 Volume 60 Issue 2



Canadian Iris Society

Board of Directors

Officers for 2015

President	Ed Jowett , 1960 Sideroad 15, RR#2 Tottenham, ON L0G 1W0 ph: 905-936-9941 email: jowettfarm@copper.net	2014-2016
1st Vice President	John Moons , 34 Langford Rd., RR#1 Brantford ON N3T 5L4 ph: 519-752-9756	2014-2016
2nd Vice President	Harold Crawford , 206 – 168 Metcalfe St., Guelph, N1E 6W3 ph: 519-822-5886 e-mail: hrcrawford29@gmail.com	(Honorary)
Acting Secretary	Ann Granatier , 3674 Indian Trail, RR#8 Brantford ON N3T 5M1 ph: 519-647-9746 email: ann@trailsendiris.com	2016-2018
Treasurer	Bob Granatier , 3674 Indian Trail, RR#8 Brantford ON N3T 5M1 ph: 519-647-9746 email: bob@trailsendiris.com	2014-2016
Membership	Chris Hollinshead , 3070 Windwood Dr, Mississauga, ON L5N 2K3 ph: 905 567-8545 e-mail: cdniris@gmail.com	2014-2016

Directors at Large

Director	Alan McMurtrie , 22 Calderon Cres. Willowdale ON M2R 2E5 ph: 416-221-4344 email: alan.mcmurtrie@gmail.com	2013-2015
Director	Gloria McMillen , PO Box 385, Otterville, ON N0J 1R0 ph: 519 532-2364 e-mail: gmcmlen@execulink.com	2014-2016
Director	Nancy Kennedy , 221 Grand River St., Paris, ON N3L 2N4 ph: 519-442-2047 email: xkennedy@sympatico.ca	2014-2016
Director	Charlie Blakeman , 18 Leclare St, Hamilton, ON L9C 5X3 ph: 905-527-3711 email: charlie.blakeman1@yahoo.com	2015-2017
Director	Pat Loy 18 Smithfield Drive, Etobicoke On M8Y 3M2 ph: 416-251-9136 email: loy_pat@yahoo.ca	2016-2018

Honorary Director

Hon. Director	David Schmidt , 18 Fleming Ave., Dundas, ON L9H 5Z4
---------------	--

Webmaster	Chris Hollinshead , 3070 Windwood Dr, Mississauga, ON L5N 2K3 ph: 905 567-8545 e-mail: cdniris@gmail.com
Newsletter Editor	Ed Jowett , 1960 Sideroad 15, RR#2 Tottenham, ON L0G 1W0 ph: 905-936-9941 email: jowettfarm@copper.net
Newsletter Designer	Vaughn Dragland ph. 416-622-8789 email: vaughn@e-clipse.ca

Table of Contents

President's Report (Ed Jowett)	2
Iris Buy Trade or Sell	3
Musings From Manitoba (B. J. Jackson)	4
Canwest Iris Society	7
Eclipse Design Studio (ad)	9
Have You Seen This Iris? Part 4 (Don McQueen)	10
Iris missouriensis (John Moons)	12
The Downy Mildew Story (Kate Dawson)	14
SOIS Annual Show Schedule	15
2016 Iris Rhizome Sale	20
Terra Greenhouses (ad)	55
Payne Medal (Ann Granatier)	56
Raised Gardens (Ed Jowett)	58
SOIS - News, Views & Coming Events	60
CIS - Coming Events and Dates to Remember	63
Canadian Sources for Irises	64
Liaisons and Regions	65

Cover Photo: *'Luminaire'* (Terry Aitken, New introduction 2016) SDB 9" (23 cm) ML.
This little charmer is a deep burgundy-black self with starchy white beards and a white zonal spot.

President's Report

By Ed Jowett

I apologize for the lateness of this newsletter; it seems the more I try to get in step the farther out I get.. First came Mother's Day. Then my friend and designer had to move as he had sold his house and possession was wanted relatively quickly, then I fell three times in two weeks on the ice. This note is really one finger poke as I cannot still use my left hand. It has been five weeks since I really put it out of commission.

Since I am so late I extended the sale one extra week. I stuck with Canadian grown growers both for climate and the high price of the American dollar this year. I hope you like the choices in the catalog.

I believe spring has finally arrived to stay but checking the Iris that are blooming they are about 4 – 5 days later than last year. At the moment I only have 7 in bloom out of 75 – 80 in bloom. Finding help to dig my garden is hard as anyone can dig but very few know a flower from a weed. And not being around to supervise it is hard. At the moment I am working 15 hour days. Who would believe a school day could be spread out this long, but high school to elementary to college drags the day till 8.30 – 8.45 P.M. from 5.30 A.M.. I am looking forward to the summer break.

Our SOIS show for southern Ontario is also fast approaching which will be followed by a picnic at Trails End Iris gardens. This is always a nice relaxing period after the show and a nice time to sit and talk with members we only see maybe once or twice a year. This year we have placed an add on Garden Making a web site advertising all across Canada by province of anything you like to post to do with gardening but it is interesting to become a member (free) and get notification of what is going on close to home or away that you normally don't hear of.



The comments and statements in this bulletin are those of the writers and not necessary those of the board or society.

Now and near future is a good time to take a picture of those Iris you don't really know if the name is true and submit them to Don McQueen or my self.

I am sure everyone is busy in the garden and enjoying their hard efforts now hat the weather has warmed up but is still not normal Canadian weather. Like the hort Society I would like to know of anything you would like us to do as a Society. Promote gardening as it is disappearing fast. Our hort society membership has dropped about 40 % in 1 year.

We need gardens to allow us to live believe it or not. It seems we solve our problems by creating more problems; look around you how any wet lands have been filled or trees removed for housing developments. Thus reducing our oxygen and habitant for birds and wildlife driving them into the cities then we complain they are there. After the ice storms Hydro decides to cut down all trees around lines; the real fix is to put lines under ground fixed once and for all.

Enough of my blast on conservation... I just get uptight these days as no one seems to think ahead.

Ed Jowett



Iris Buy Trade or Sell

Variety	Type	Year Intro	STW	Contact	Photo
Blackberry Jubilee	SIB	1997	S/T	jowettfarm@copper.nt	Y
Crème Caramel	SIB	2003	S/T	jowettfarm@copper.nt	Y
Harmony Hill	SIB	2004	S/T	jowettfarm@copper.nt	Y
Just Cruising	SIB	2001	S/T	jowettfarm@copper.nt	Y
Roaring Jelly	SIB	1992	S/T	jowettfarm@copper.nt	Y
Ruffled Romp	SIB	2007	S/T	jowettfarm@copper.nt	Y
Salamander Crossing	SIB	1999	S/T	jowettfarm@copper.nt	Y
Sapphire Royale	SIB	1999	S/T	jowettfarm@copper.nt	Y
Summer Revels	SIB	1999	S/T	jowettfarm@copper.nt	Y
Three Hand Star	SIB	2001	S/T	jowettfarm@copper.nt	Y
Tree of Songs	SIB	2006	S/T	jowettfarm@copper.nt	Y
Uncorked	SIB	2002	S/T	jowettfarm@copper.nt	Y

Musings From Manitoba



By: B. J. Jackson

(jacksonb@mts.net)

I think it is fairly safe to say that true spring has arrived in southwestern Manitoba. Mother Nature surprised us with a few days in the 20s but then she decided it was too soon so the temperatures went back to what we call normal for April. So far I have spent my time reseating heaved rhizomes, scraping moss from rhizomes in some areas and overall just clearing off the leaf mulch and tidying up the plants. A few MDBs are showing signs of bud swelling so it appears the season is on track. First bloom is expected in the next few weeks.



In other news, Can-West Iris Society has reached another milestone! The newsletter has come of age and 2016 marks its 10th year of publication. The first edition (Volume 1, Issue 1) appeared in 2007 when we were still the Northern Lights Iris Society. In 2008 we became the Can-West Iris Society and the newsletter name Aurora was adopted. The name was chosen from many suggestions and it has and continues to serve us well.

We have been busy over the winter with planning and even managed to put together and complete four judges training events facilitated by BJ Jackson. We currently have two G/E judges and one candidate. Longtime member, hybridizer and judge Ed Czarnecki passed away in March. He will be missed.

Please see our 9th annual show schedule elsewhere in this newsletter. If you find yourself in the neighborhood on June 12th, we'd love to see you. In addition to the exhibition of iris stems, we are once again having a display design division, a rhizome sale table and lots of fun!

Happy Iris season and may the weather gods smile upon us all...





9th Annual Iris Show

**Bourkevale Community Centre
100 Ferry Road
Winnipeg, Manitoba**

Sunday, June 12th, 2016- 1:00 to 4:00 p.m.

Free Admission!!!

Show Chair: B.J. Jackson, jacksonb@mts.net



Show Rules and Regulations

1. This accredited show is being held and judged under the rules and regulations of the American Iris Society (AIS). Official rules and regulations of the AIS cannot be violated. Judges' decisions will be final.
2. All entries **MUST** be staged between 9:00 a.m. and 10:00 a.m. Late entries will be accepted for display purposes only.
3. Exhibition privileges are open to all, including judges.
4. This is a cultivar show. All entries must have been grown and entered in person by the exhibitor whose name appears on the entry tag with the correct cultivar name and placed in the appropriate class. Each exhibitor is limited to one entry per cultivar; otherwise the number of entries by an exhibitor is not restricted.

Containers are provided by the Society.

The Placement Committee will aid exhibitors to correctly identify the appropriate section and class.

Seedlings must be entered under seedling name or number and in the name of the originator.

5. Judging will begin at 10 a.m. The show is open to the public from 1 to 4 p.m. Exhibitors may not remove entries prior to 4 p.m. Unclaimed entries will be disposed of as deemed appropriate by the Show Committee.
6. The Show Committee will exercise all possible care but cannot be responsible for loss or damage to exhibits.
7. Exhibits entered in the "Unidentified" and "Collections" sections are not eligible for AIS Awards or Best in Show but are eligible for CWIS ribbons and awards.

Artistic Design

Please contact Jennifer Bishop at jennifer@dataways.com for more information. This is a display only class that will not be judged. Show attendees will vote on a People's Choice Award and a CWIS prize will be awarded.

Show Schedule

DIVISION 1 - HORTICULTURE

Section A - Miniature Dwarf Bearded

Section B - Standard Dwarf Bearded

Section C - Intermediate Bearded

Section D - Miniature Tall Bearded

Section E - Border Bearded

Section F - Tall Bearded

Section G - Other

Class 1 - Species or Species X (bearded or non-bearded)

Class 2 - Siberian

Class 3 - Spuria

Section H - Collections

Class 4 - Collection of three of the same bearded cultivar

Class 5 - Collection of three different bearded cultivars

Class 6 - Collection of three of the same non-bearded cultivar

Class 7 - Collection of three different non-bearded cultivars

Collections are Eligible for CWIS Ribbons and Awards Only

Section I - Seedlings

- Any Named or Numbered Seedling, any classification

Section J - Historic Iris, (introduced before 1987)

- **Variety and year of introduction must be indicated.**

Section K - Unidentified (no variety name known)

- Judged on condition and grooming - eligible for CWIS ribbons only

DIVISION 2 - ARTISTIC DESIGN (Display only)

The Show Committee reserves the right to add any classes deemed appropriate to include all entries.

Can-West Iris Society

The Can-West Iris Society is a not for profit organization with affiliate status in the American Iris Society.

Membership is open to all persons interested in iris regardless of skill or experience.

For membership information, please contact Deborah Petrie at petrie@mymts.net.

American Iris Society

The American Iris Society is a not for profit institution incorporated in 1927. The Corporation exists for the sole purpose of promoting the culture and improvement of the iris and is the official registrar for all but bulbous iris (ie. Dutch and Juno iris).

You are invited to join the American Iris Society. Official applications and additional information will be available at the show or can be obtained from the official AIS website: www.irises.org.

RVP Region 21 (Iowa, Nebraska, South Dakota, North Dakota, NWT, Nunavut, Alberta, Saskatchewan and Manitoba): Linda Wilke (lrwilkie@gmail.com).

Awards

AIS Best Specimen in Show Certificate/Trails End Iris Gardens Prize Horticultural Sweepstakes:

- AIS Silver Medal and Certificate - highest number of first place ribbons)
- AIS Bronze Medal and Certificate - second highest number of first place ribbons

Best Historic Stem in Show - Sponsored by Can-West Iris Society

Best Canadian Hybridized Stem in Show - Sponsored by Chapman Iris

CWIS People's Choice Award - Voted by those attending the Show

Exhibition Certificates are awarded to the outstanding seedling, plus any seedling that obtains at least five (5) votes from certified AIS judges.

All AIS judges are asked to contact the Show Chair in order to pick up seedling ballots.



Eclipse Design Studio



- ✓ Logos
- ✓ Posters
- ✓ Graphics
- ✓ Web Sites
- ✓ Brochures
- ✓ Magazines
- ✓ Newsletters
- ✓ Ad Layouts
- ✓ Annual Reports
- ✓ Business Cards
- ✓ Photography
- ✓ Photo Editing

***Let Eclipse lift your
corporate image to a
higher dimension...***

"You're never too far away..."



Eclipse Technologies Inc.
www.e-clipse.ca
416-622-8789

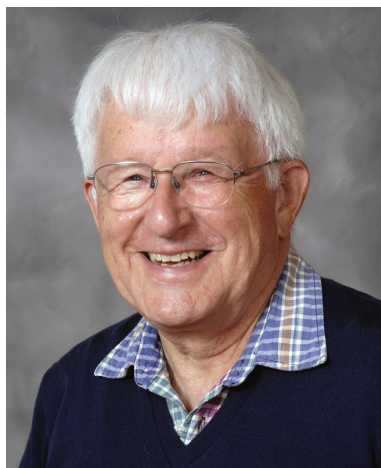


HAVE YOU SEEN THIS

IRIS ? Part 4

Compiled by Don McQueen

This is the fourth installment of the “mystery” iris series - that is, varieties for which the owner has no name, or found the identity was incorrect, is an attempt to unravel these mystery blooms - or Noids (parlance for ‘no identification’) - the CIS Newsletter is publishing a series of photos in anticipation a member or members will recognize the variety.



If you can identify any of the Noids in Parts 1 through 4, please contact the CIS Newsletter editor, or Don at ddmcqueen@rogers.com

Mystery 4.1:

This MDB or SDB was found growing amongst a patch of ZIPPER in Penticton this spring - but it is not the correct shade of ZIPPER yellow !! It is that bluish white, gold-tipped beard, and a shade of red which shifts to brownish maroon in soft light or shadow which may help to identify it. It grows about 10 - 12" high; the flowers measure about 3" wide & 2 ½" high and there is no Purple Based Foliage (PBF). Might it be LADY IN RED ?

Mystery 4.2:

This recently introduced TB was sold as COPPER AND SNOW ... which it isn't; although the copper part of the name is certainly fitting. The iridescent purple-magenta flush flanked by the yellow shoulders on the falls will likely help with identifying it correctly.



Mystery 4.3:

This variety with a pinkish-lavender bloom, likely a TB, was found in Lindsay. No name was associated with it, but growers of older iris may recognize it because of its form, bright orange beard and henna shoulder veining.



Iris missouriensis

By John Moons

The *Iris missouriensis* is native to western North America. In the genus *Iris* you will find it in the subgenus *Limniris* section *Limniris*. This section has 16 series and one of them is *Longipetalae*. This series has just 2 species, *Iris longipetala* and *Iris missouriensis*. The *missouriensis* is also called Rocky Mountain Iris, western blue flag and Missouri flag.



This *Iris* was first described and named by Thomas Nuttall (1786-1859) in the *Journal of the Philadelphia Academy of Sciences* in 1834. The specimens were collected by Nathaniel Wyeth who was a traveler and trader. He found them on his first continental journey in 1832-1833 close to the sources of the Missouri River. William Herbert offered a few other names in 1839 but they are now all synonyms. Some synonyms are: *iris arizonica* Dykes, *Iris longipetala* var. *Montana* Baker, *Iris montana* Nutt. Ex Dykes, *Iris pariensis* S.L. Welsh, *Iris pelogonus* Goodd, *Iris tolmieana* Herb. and *Limniris missouriensis* (Nutt) Rodion.

This *Iris* has caused a lot of confusion. The species is very variable. Some people have tried to consider some of the plants separate species but officially the literature considers this plant a single species with a diverse morphology.

It has been found in a big geographical area. To the north it is found in Alberta and British Columbia. From Washington, Oregon and California in the west, you can find it in the Dakota's, Colorado, New Mexico, even into Mexico. It is not found in the state of Missouri.

It can be found in big colonies. In Arizona a patch of *missouriensis* has been found that is 40 m. across which seems to be one plant. This plant is more robust than others in the neighbourhood. All of the seeds of this plant seem to be sterile so the plant is able to put all of its energy into vegetative growth.

The plants grow from low elevations up to 3,000 m. high. The *missouriensis* needs a good amount of moisture during the flowering season but it has to be followed by hot dry weather so that it gets a required time of rest. It will grow along creeks and in wet spots or meadows as long as these places dry up in the summer. In the summer the area where it grows, may look like a piece of the desert, but in the spring it will be full of *Irises*. The *missouriensis* loses its leaves in the summer. Ranchers don't like these plants. Animals don't eat them but will eat the grass around the *Irises* so that when the *Iris* seed is ripe there is not a lot of competition from the grass. Thus the *Iris* spreads easily.

The *missouriensis* has a rhizome that is 20 – 30 mm thick. The leaf colour is grey-green. The flower stems stand straight up, 25 – 60 cm tall, hairless, and are sometimes branched. The floral stems may have one or two leaves on them. There are 1 – 4 flowers facing upwards on each flower stem. The flower colour is pale blue to deep blue but the colours can be mauve or white. Even yellow flowers have been reported but they are rare. The lighter colours might have veining in the falls. The albas have a golden throat but little veining. The flowers are 6 – 7 cm. across. The falls are spread out horizontally with the ends bent down a bit. The falls are 25 mm. wide. The standards stand in a 60 degree angle and have a darker colour than the falls. The standards are about 12 mm. wide.

The fruit is a capsule with 6 chambers and 3 – 5 cm. long with a diameter of 12 – 20 mm. Each capsule has from 20 to 80 seeds. The seeds germinate easily. According to Norman Deno, the seeds need light to germinate so do not plant the seeds too deep.

Divisions can be made in the fall after the rains have started or in the spring after the danger of frost has passed. Sometimes it is a good idea to make divisions both in the fall and in the spring. The plants will grow in a sandy to loamy soil. The pH should be 6 – 7. The plants do best in full sun. The plants need plenty of water until flowering time and after that dry conditions. If the summers are too wet and cool, the plant will flower poorly. It will grow in USDA Zones 5 – 8. The plants are said to be short lived so it is best to divide every few years. When I looked for places where I can buy the *missouriensis* I found that only seeds are offered. It is very hard to find places that sell cultivars.

A few names of cultivars are:

- Bluebird, Camas Blue, Claude Bar, Miss Peacock, Miss Pink Dove, Snow Bird.
- Tollong is a cross of the *missouriensis* with *Iris longipetala* and has been around for 100 years.

A few other facts about the *missouriensis*.

In north-western California the natives used the single silky fiber taken from each margin of the leaf to make a very light and strong rope. This *Iris* is said to have a number of medicinal uses. Some are questionable because the plant is quite poisonous.

Books used for this article:

- The Iris Book* by Molly Price Van Nostrand 1966
Rare Wild Flowers of North America by Leonard Wiley Published by author, Portland Oregon 1969
Irises by Pamela McGregor and Allison Nicoll Firefly 2001
Several issues of *SIGNA*, a publication of the Species Iris Study Group of the American Iris Society
Seed germination; Theory and Practice, Second Edition by Norman C.Deno Published by author 1993



The Downy Mildew Story

By Kate Dawson

<http://www.cutdriedflowerfarm.com/>

Downy Mildew is a disease of plants that has started affecting certain commercially grown ornamental plants in Ontario over the last 5 or 6 years. Bedding Impatiens, so widely grown for their excellent performance in shade are one of the plants that have been particularly badly hit. Today, plants will be growing beautifully but tomorrow, suddenly wilt and die fast. There are theories that the disease has come from inbreeding problems within the industry, but wherever it originated, **please do not plant bedding Impatiens in your garden** until the industry has this problem under control. They will likely die, and you will be out of pocket and have the work of replanting with other plants. Downy Mildew affects all bedding Impatiens varieties, including double and exotic types. Most socially responsible commercial growers are no longer growing these types of Impatiens. We have not grown them for 4 or 5 years now. Instead, there are several other options for colourful annual shade plantings.



Some include:

- New Guinea Impatiens, various colours
- Dragon Wing Begonia Red or Pink
- Baby Wing Begonia White
- Fibrous Begonia, various colours
- Tuberous Begonia Non Stop, various colours
- Bacopa Snow Globe
- Coleus varieties
-

Downy Mildew affects all bedding Impatiens varieties, including double and exotic types.



Southern Ontario Iris Society Show

Sunday, June 5, 2016

1:00 p.m. through 3:30 p.m.

**Location: Royal Botanical Gardens
680 Plains Road West, Burlington,
ON**

Southern Ontario Iris Society

You are invited to join the Southern Ontario Iris Society (SOIS). New members are welcome. The Southern Ontario Iris Society (SOIS) is an affiliate of the **Canadian iris Society** and also the **American Iris Society**.

Join us at our next regular event, the annual iris rhizome sale on Sunday August 14, 2016 at the Royal Botanical Gardens, 680 Plains Road West, Burlington, ON. Visitors (non-members) are very welcome at this sale/auction event. This is an opportunity to obtain some of the same beautiful iris on display here today for your own garden. We look forward to seeing you again. Event and membership details are available on the SOIS website: www.cdn-iris.ca/sois

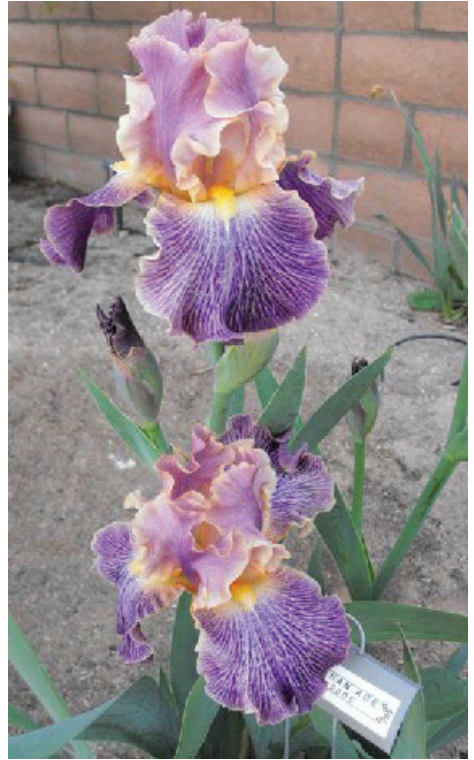
Canadian Iris Society

You are invited to join the Canadian Iris Society (CIS). New members are welcome. Membership is open to all persons interested in irises regardless of skills or experience.

Official membership applications and other information will be available at the show or on the CIS website: www.cdn-iris.ca

American Iris Society

You are invited to join the American Iris Society (AIS). New members are welcome. AIS Region 2 includes the province of Ontario. Official membership applications and additional information will be available at the show or on the official AIS website: www.irises.org



CIS Awards

F.A. Garrity Trophy

-best iris stalk exhibited in the show

W.J. Moffat Trophy

-best stalk of an unnamed tall bearded iris seedling.

Les Richardson Award

-best stalk of an unnamed iris seedling other than tall bearded.

O.A. Kummer Cup

-best stalk of a named iris of Canadian origin.

Novice Cup

-awarded to exhibitor winning most points in novice section

Junior Trophy

-awarded to exhibitor winning most points in junior section.

AIS Awards (Division 2 not eligible)

AIS Silver Medal and certificate

-Most red ribbons Division 1 Sections A-E

AIS Bronze Medal and certificate

-2nd most red ribbons Division 1 Sections A-E

The individual ribbons awarded to the entries are provided by the Southern Ontario

Iris Society:

Red - First

Blue - Second

White - Third

Pink - Honorable Mention

Exhibition Certificates

-best seedling and any other seedling receiving five or more votes from qualified judges.

Show Committee

Chair: Chris Hollinshead

e-mail: chrisca@gmail.com

Co Chair: Ed Jowett

e-mail: jowettfarm@copper.net

Show Rules

1. The judging standard will be that of the American Iris Society's Judge's Handbook and cannot be violated. The decision of the judges shall be final.
 2. Exhibition privileges are open to all, including judges
 3. All horticultural exhibits must have been grown and entered in person by the exhibitor whose name appears on the entry tag.
 4. All entries MUST be staged between 8am and 11am to allow judging to conclude by 1pm. Late entries will be accepted for display purposes only.
 5. All entries must be entered under name and in class number specified in the show schedule.
 - Containers are furnished by the Society.
 - The number of entries by an exhibitor is not restricted, but they may enter only one specimen of each cultivar per division.
 - The placement committee will aid the exhibitors correctly identify the appropriate section.
 - Cultivars are to be arranged alphabetically in each class to facilitate staging and judging.
 - There is no admission fee for the show.
 6. The show area is open to the public only upon completion of the judging (approx. 1pm). No one is allowed in the exhibit area excepting the judges, the clerks and the show chairman.
- *Special arrangements can be made for photographers before the show is open to the public, please contact the show chairman.
7. Exhibitors may not remove entries prior to 3:30 pm. Unclaimed entries will be disposed of.
 8. The Show Committee will exercise all possible care but cannot be responsible for loss or damage to exhibits.

The major awards are perpetual and remain the property of the Canadian Iris Society (CIS). All judges are asked to contact the show chairman in order to pick up seedling ballots.



Classification

Division One: Iris Species

Section A: An iris cultivar introduced by a Canadian hybridizer.

Class 1 Tall Bearded

Class 2 Other Bearded iris

Class 3 Other Iris

Section B: Historic Iris (introduced 30+ years ago)

Class 4 Tall Bearded

Class 5 other bearded Iris

Class 6 other Iris

Section C: Bearded Iris

Class 7 Tall Bearded

Class 8 MDB Miniature Dwarf Bearded

Class 9 SDB Standard Dwarf Bearded

Class 10 IB Intermediate Bearded

Class 11 BB Border Bearded

Class 12 MTB Miniature Tall Bearded

Class 13 other Bearded Iris

Section D: Beardless Iris

Class 14 Siberian iris

Class 15 Japanese iris

Class 16 other beardless iris

Section E: Novice Class

class 17 Tall Bearded Class

class 18 Other Bearded Class

class 19 Other Iris

Section F: Junior Class

class 20 Tall Bearded Class

class 21 Other Bearded Class

class 22 Other Iris

Section G Collections

Class 23 Three named Tall Bearded cultivars

Class 24 Three named Siberian cultivars

Class 25 Three blooms or stalks as appropriate, all same cultivar not included in class 23/24

Division Two: Exhibitions

Section H: Seedlings

Class 26 Tall Bearded

Class 27 Other Bearded

Class 28 Other Iris

Section I:

Class 29 Herbaceous perennials and biennials as companions for iris.

Notes:

Bulbous irises entered in Class 16 and Class 29 are eligible to receive award ribbons and special section awards only. Award ribbons are included in the tally for Silver and Bronze Medal/Certificates, but these entries are not eligible for the “Best Specimen of Show” award.

The Novice Cup and the Junior Trophy are decided by total points, Points are awarded as follows:

- Major Trophy Awards 10 points
- Court of Honour 10 points
- 1st prize (red ribbon) 5 points
- 2nd prize (blue ribbon) 3 points
- 3rd prize (white ribbon) 2 points

*points are not allocated for any other purpose.

JOIN IN THE FUN

Bring along your best flower stems.

The Southern Ontario Iris Society welcomes you to the 2016 iris show. Enjoy the irises!



Southern Ontario Iris Society

Join the society that specializes in one of the flowers you love

1 Year	\$10.00	
3 Years	\$20.00	Save \$10.00

Join both societies (CIS & SOIS) and save

1 year	\$25.00
3 Years	\$60.00



Send us your articles

The editor would appreciate contributions to the newsletter from the general membership. If you have news of an Iris event; or looking for a particular variety or type of Iris; growing or cultivation advice, let us know. If you have plants to sell or anything you would like to share, please do so. Send them to the editor for submission. This way we can make our newsletter bigger and of more interest to our readers. (For address see inside front cover.)



Canadian Iris Society: 2016 Iris Purchase Program mini-catalogue

This year the Canadian Iris Society (CIS) again offers a selection of special high quality iris plants for your growing pleasure. This program helps support the activity and function of the CIS and its registered affiliates, a further plus is that you get yourself some very nice flowers at the same time too!

Please take note that the CIS Purchase Program is reserved for current CIS members only. (if not a CIS member; see the note below on how you can still participate by joining at the same time as you order)

Here is how it works: Choose your special new irises from our 2016 listing, reserve them by prepaying for them now and then at the correct planting time later in the summer we ship them directly to your home. When your order is received the available plants are reserved for you. **Order early for the best selection.** All the plants are a limited supply and some of these will go fast so do not delay! With the help of our iris friends at a major commercial iris garden we have available a selection of recent iris introductions and they are at great bargain prices compared to what you would normally pay. These will be top quality rhizomes that will be shipped directly to you. The plants on offer are all American Iris Society (AIS) registered and named iris cultivars. Each will be clearly labeled and ready to pop into your garden. We will provide you with the info on the expected time of arrival once we have that information, but your delivery will likely be near the end of July.

The plants listed will be sold on a first come first served basis to CIS members. Place your order by e-mail, phone or postal mail. If a plant is sold out we will notify you by phone or e-mail so you have a chance to change your order or cancel. Payment must be received before any shipment will be made.

The sale opening /closing date: So that everyone has a fair and equal chance to review the listing and obtain the available plants, **orders will only be received from June 1, 2016 onwards. The sale will end July 11, 2016.** This will allow us to process the orders, ship them to you and therefore give you adequate time to plant the irises so that they become well established before cold weather/winter arrives. We suggest to place an order as soon as possible as the items are limited in quantity therefore your available selection will be greatly reduced as time progresses.

2016 Shipping Costs: Ontario: 1-10 rhizomes \$11.00 | 11-20 rhizomes \$18.00 | 21-30 rhizomes \$25.00 | 31-40 rhizomes \$32.00 | 41-50 rhizomes \$39.00
rest of Canada: 1-10 rhizomes \$18.00 | 11-20 rhizomes \$25.00 | 21-30 rhizomes \$32.00 | 31-40 rhizomes \$39.00 | 41-50 rhizomes \$46.00

Please send your order and payment by cheque or money order payable to the **Canadian Iris Society**. Send your order to the sale coordinator: Ed Jowett, 1960 Sideroad 15, RR#2 Tottenham, ON L0G 1W0 telephone: 905-936-9941 | email: jowettfarm@copper.net

Notes: Again please remember that to participate in this you need to be a current CIS member. Need to find out more information about becoming CIS member? ...please go to the membership area of the CIS website: www.cdn-iris.ca If you are not a CIS member and wish to participate in the sale you may include the applicable CIS membership fee + membership form along with your order.

Tall Bearded (TB) Listing



Curry Road

TB 2016

McMillen 2016 Season Mid , Style Self, Standards Bright, zesty orange; orange style arms

Falls Bright, zesty orange; slight yellow patch below beard , Beards Very bright red

Substance, Comments Beautifully ruffled and fluted

Price \$22.00



Daughter of Stars

TB 2001

Spoon 2001 Season Early to Mid, Style Luminata, Standards Ruffled Lavender, Falls Ruffled and Flaring Lavender Fading to White at Beard, Beards Pale Yellow tipped White, Substance. Comments Sweet

fragrance and occasional re-bloom Awards/Year HM '03, AM '05, JW '07 Price \$6.00



Dazzling Fantasy

TB 2015

John McMillen 2015 Season Mid to Late, Style Self, Standards Vibrant golden yellow, Falls Vibrant golden yellow

Beards Yellow at front; back half golden orange

Price \$17.00



Dearest Di

TB 2015

John McMillen 2015 Season Mid , Style Self, Standards Closed, upright and ruffled blue -violet, Falls Broad, flaring and overlapping silver dusted blue -violet; lighter in center , Beards White

Price \$17.00

Tall Bearded (TB) Listing



Eramosa Peach Sorbet

TB 2014

Chapman 2014 E 37" A cold hardy garden plant. High bud count (up to 12 buds in my zone 4 garden) a very long bloom season, fast increase and reliable performer. Closed standards are white with pink blushed centers. Falls are peach with narrow white rim and radiating lines around coral red beards. Faint floral fragrance
Price \$10.00



Eramosa Ridge

TB 2009

Chapman 2009 M 42" Rich royal purple plicata heavily stippled on Standards & Falls; purple beard. .Very cold hardy and prolific. Winner of Gold Medal in Russian International competition
Price \$5.00

Tall Bearded (TB) Listing



Epicenter

TB 1994

Ghio 1994 Season Early to Mid, Style Plicata, Standards Arched, rich black cherry, Falls Apricot with wide black cherry banding and stitching, Beards Dark orange

Comments Awards/Year HM '96, AM '98

Price \$6.00



Eternal Blessings

TB 2013

John McMillen 2013 Season Late, Style Self, Standards Deep velvety tan-yellow; golden style arms with magenta lip

Falls Tan-yellow with veined violet-brown shoulders, Beards Golden orange

Price \$13.00

Tall Bearded (TB) Listing



Eternal Blues

TB 2015

John McMillen 2015 Season Late,
Style Self, Standards Pleasing light
blue deepening near base, Falls Light
blue with some green veining ,Beards
White at end; middle and throat gold
Price \$17.00



Fiery Creator

TB 2013

John McMillen 2013 Season Mid to
late, Style Bi-tone, Standards Smooth
rosy apricot, Falls Paler apricot
streaked and edged deeper shade of
apricot; light green veining , Beards
Bright red
Price \$13.00

Tall Bearded (TB) Listing



Hope For Peace

TB 2016

McMillen 2016 Season Mid to Late, Style Self, Standards Upright, ruffled cool white. Style arms white with light lilac lip. Falls Large, cool lacy white, Beards Light yellow middle and throat; white at end
Comments Nicely ruffled wide petals
Price \$22.00



La Scala

TB 2008

K. Keppel 2008 Season Early to Mid, Style Bi-colour, Standards Greyed pinkish lavender blending to violet orchid center, Falls Pale pink, center lighter and creamier, hafts flushed creamy peach, Beards White with orange tips
Comments Awards/Year HM '10; AM '12. Eligible for a Wister Medal (JW) in 2016
Price \$9.00

Tall Bearded (TB) Listing

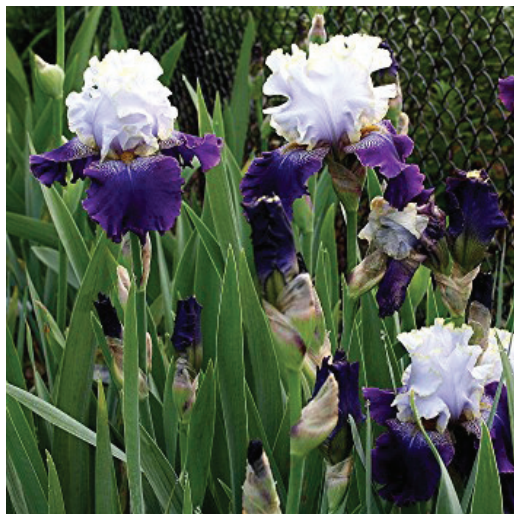


Rivers of Gold

TB 2013

John McMillen 2013 Season Mid, Style Reverse amoena, Standards Bright sunny yellow, Falls Creamy white edged yellow, Beards Bright red-orange

Price \$13.00



Slovak Prince

TB 2003

Mego 2003 Season Mid, Style Bi-Colour, Standards White; lightly shaded with orchid - lavender and edged with fine gold rim, Falls Grape - purple washed with violet tones and white veining, Beards Gold, Substance, Comments Slight, sweet fragrance. Distinctive white veining on falls

Awards/Year HM '05; AM '07, JW '09
Price \$6.00

Tall Bearded (TB) Listing



Still Thinking

TB 2016

John McMillen 2016 Season Very early, Style Bi-colour, Standards Laced, medium yellow; open and upright. Deeper yellow style arms, Falls Dusty rose streaked yellow - tan. Yellow spot around beard, Beards Deep gold Yellow
Price \$22.00



Sunset In Oxford

TB 2016

John McMillen 2016 Season Early to Mid, Style Self, Standards Mango orange; style arms same color Falls Mango orange, Beards Bright red-orange, Substance Excellent form and lots of ruffles
Price \$22.00

Tall Bearded (TB) Listing



Thundering Ovation

TB 2007

Black 2007 Season Early to Mid, Style Amoena, Standards Warm white, pale gold rim. Midrib finely veined gold, Falls Veined and sanded rosy - violet to plum then tan sanded and washed plum, Beards Medium yellow, Comments Awards/Year HM '10

Price \$9.00

Border Bearded (BB) Listing



Cranapple

BB 1995

Aitken 1995 Season Early to Mid, Style Bi-Tone, Standards Cranberry – Red, Falls Velvety Cranberry – Red, Beards Red, Substance, Comments Glistening and Velvety Smooth Awards/Year HM '97, AM '99, KM '01

Price \$6.00

Border Bearded (BB) Listing



Fragile Design

BB 2013

John McMillen 2013 Season Early,
Style Self, Standards Ruffled blend of
purplish magenta, Falls Purplish
magenta, cinnamon veined hafts
with paling edges of light golden tan,
Beards White tipped gold, Very
unique!!

Price \$8.00

We hope that you find yourself some nice new irises in our sale catalogue.
Thank you for your participation and kind support of the Canadian Iris Society.

We wish you good gardening through the season.

...and keep reading, there's many more irises below!

Canadian Iris Society

2016 Iris Purchase Program Order Form

This year the Canadian Iris Society (CIS) again offers a selection of special high quality iris plants for your growing pleasure. This program helps support the activity and function of the CIS and its registered affiliates, a further plus is that you get yourself some very nice flowers at the same time too!

Please take note that the CIS Purchase Program is reserved for current CIS members only. (if not a CIS member; see the note below on how you can still participate by joining at the same time as you order)

Here is how it works: Choose your special new irises from our 2016 listing, reserve them by prepaying for them now and then at the correct planting time later in the summer we ship them directly to your home. When your order is received the available plants are reserved for you. **Order early for the best selection.** All the plants are a limited supply and some of these will go fast so do not delay! With the help of our iris friends at a major commercial iris garden we have available a selection of recent iris introductions and they are at great bargain prices compared to what you would normally pay. These will be top quality rhizomes that will be shipped directly to you. The plants on offer are all American Iris Society (AIS) registered and named iris cultivars. Each will be clearly labeled and ready to pop into your garden. We will provide you with the info on the expected time of arrival once we have that information, but your delivery will likely be near the end of July.

The plants listed will be sold on a first come first served basis to CIS members. Place your order by e-mail, phone or postal mail. If a plant is sold out we will notify you by phone or e-mail so you have a chance to change your order or cancel. Payment must be received before any shipment will be made.

The sale opening /closing date: So that everyone has a fair and equal chance to review the listing and obtain the available plants, **orders will only be received from June 1, 2016 onwards. The sale will end July 11, 2016.** This will allow us to process the orders, ship them to you and therefore give you adequate time to plant the irises so that they become well established before cold weather/winter arrives. We suggest to place an order as soon as possible as the items are limited in quantity therefore your available selection will be greatly reduced as time progresses.

2016 Shipping Costs: Ontario: 1-10 rhizomes \$11.00 | 11-20 rhizomes \$18.00 | 21-30 rhizomes \$25.00 | 31-40 rhizomes \$32.00 | 41-50 rhizomes \$39.00

rest of Canada: 1-10 rhizomes \$18.00 | 11-20 rhizomes \$25.00 | 21-30 rhizomes \$32.00 | 31-40 rhizomes \$39.00 | 41-50 rhizomes \$46.00

Please send your order and payment by cheque or money order payable to the **Canadian Iris Society**. Send your order to the sale coordinator: Ed Jowett, 1960 Sideroad 15, RR#2 Tottenham, ON L0G 1W0 telephone: 905-936-9941 | email: jowettfarm@copper.net

See the 2016 mini catalogue showing all the irises in full color along with written descriptions

Notes: Again please remember that to participate in this you need to be a current CIS member. Need to find out more information about becoming CIS member? ...please go to the membership area of the CIS website: www.cdn-iris.ca If you are not a CIS member and wish to participate in the sale you may include the applicable CIS membership fee + membership form along with your order.

2016 CIS Iris Purchase Program order form

Cultivar Name	Year	Price	Quantity	Amount	...notes
Tall Bearded (TB)					
Curry Road	2016	22.00			
Daughter Of Stars	2001	6.00			
Dazzling Fantasy	2015	17.00			
Dearest Di	2015	17.00			
Eramosa Peach Sorbet	2014	10.00			
Eramosa Ridge	2009	5.00			
Epicenter	1994	6.00			
Eternal Blessings	2013	13.00			
Eternal Blues	2015	17.00			
Fiery Creator	2013	13.00			
Hope For Peace	2016	22.00			
La Scala	2008	9.00			
Rivers of Gold	2013	13.00			
Slovak Prince	2003	6.00			
Still Thinking	2016	22.00			
Sunset In Oxford	2016	22.00			
Thundering Ovation	2007	9.00			
Border Bearded (BB)					
Cranapple	1995	6.00			
Fragile Design	2013	8.00			
Intermediate Bearded (IB)					
Banshee	2005	6.00			
In a Flash	2001	5.00			
Oblivion	2003	6.00			
Miniature Tall Bearded (MTB)					
Dividing Line	2005	6.00			
Eramosa Cloud Drifter	2009	5.00			
Fashionably Gold	2010	6.00			
Hot News	2009	7.00			
Rosemary Brown	2014	7.00			
Subtotal page 1				\$	

2016 CIS Iris Purchase Program order form						
Cultivar Name		Year	Price	Quantity	Amount	...notes
Standard Dwarf Bearded (SDB)						
Acid Test		2012	6.00			
Bennett's Star		2013	6.00			
Bluebeard's Ghost		2006	4.00			
Blue Hat Boy		2007	4.00			
Burn Notice		2014	8.00			
Cat's Eye		2002	4.00			
Celebrate		2007	6.00			
Classic Sunrise		2005	4.00			
Co-Ed Flirt		2003	5.00			
Cookie Monster		2013	6.00			
Eramosa Oompa-Loompa		2012	5.00			
Fudge Icing		2012	6.00			
Going in Circles		2013	8.00			
In the Zone		2014	8.00			
Lookout Sunshine		2009	4.00			
Missish		2013	7.00			
Naked Grape		2011	6.00			
Pole Dancer		2012	6.00			
Reddy Freddie		2012	6.00			
Ruby Passion		2004	5.00			
Summoned Spirit		2002	6.00			
Sweet and Innocent		2010	6.00			
Sweethearts Again		2004	5.00			
Toffee Time		2015	10.00			
Ultimate		2003	5.00			
Urban Myth		2011	5.00			
Miniature Dwarf Bearded (MDB)						
Blue Wind		1982	4.00			
Tiny Titan		2002	5.00			
Subtotal page 2					\$	

2016 CIS Iris Purchase Program order form: order summary/totals

subtotal from page 1	\$
subtotal from page 2	\$
shipping total (please see below and add as applicable)	\$
Total order	\$

2016 Shipping Costs:

Ontario: 1-10 rhizomes \$11.00 | 11-20 rhizomes \$18.00 | 21-30 rhizomes \$25.00
| 31-40 rhizomes \$32.00 | 41-50 rhizomes \$39.00

rest of Canada: 1-10 rhizomes \$18.00 | 11-20 rhizomes \$25.00 | 21-30 rhizomes \$32.00
| 31-40 rhizomes \$39.00 | 41-50 rhizomes \$46.00

Your Shipping information:

Ship to:		
Name:		
Address:		
City:		
Province:		Postal code:
Phone:		
e-mail:		
Date:		

Please send your order and payment by cheque or money order payable to the **Canadian Iris Society**.

Send your order to the sale coordinator:

Ed Jowett, 1960 Sideroad 15, RR#2 Tottenham, ON L0G 1W0

telephone: 905-936-9941 | email: jowettfarm@copper.net

Thank you for supporting the Canadian Iris Society

Intermediate Bearded (IB) Listing



Banshee

IB 2005

M. Smith 2005 Season Mid, Style Self, Standards Red- Black, Falls Velvety Black, Beards Orangey-Red, Substance, Comments Awards/Year HM '07

Price \$6.00



In A Flash

IB 2001

Black 2001 Season Mid, Style Self, Standards Dark red-violet, Falls Dark red-violet, Beards Bright orange; white at end

Comments Awards/Year HM '04

Price \$5.00

Intermediate Bearded (IB) Listing



Oblivion

IB 2003

M. Smith, 2003, Season Mid, Style Plicata, Standards Dark Raspberry, Falls Dark almost Black, Raspberry plicata, Beards Bright Yellow, Substance

Comments Very strong grower

Awards/Year HM '05; AM '09

Price \$6.00

Miniature Tall Bearded MTB Listing



Dividing Line

MTB 2005

Bunnell 2005, Season Mid, Style Bi-Colour, Standards Pale Blue - Violet, Falls Pale Blue - Violet edge and centre line with Purple spot, Beards Yellow

Comments Awards/Year HM '07, AM '09, WW '11, DM '14

Price \$6.00

Miniature Tall Bearded MTB Listing



Eramosa Cloud Drifter

MTB 2009

Chapman 2009 ML 20" Delicate violet lines and plicata stitching on white ground; white beard

Price \$5.00



Fashionably Gold

MTB 2010

K. Fisher 2010 Season Mid, Style Plicata, Standards Bright yellow-gold, Falls Medium yellow; white spot, Beards Orange

Price \$6.00

Miniature Tall Bearded MTB Listing



Hot News

MTB 2009

Markham 2009

Season Mid, Style Bi-Tone,
Standards Brick red, Falls Wine red;
gold at hafts, Beards Gold,
Substance

Comments Awards/Year HM '11;

AM '13. Williamson-White (WW)

Medal in 2015

Price \$7.00



Rosemary Brown

MTB 2014

Chapman 2014 24"M Delightful
delicate flowers and flower stock
with many sequential flowers.

Yellow standards over white falls
with yellow hafts.

Price: \$7.00

Standard Dwarf Bearded (SDB) Listing



Acid Test

SDB 2012

Blyth 2012 EM 12" S. apricot; F. apricot, tan veins radiating outward from beards, white blaze; beards white base, hairs tipped tangerine orange; slight sweet fragrance. Price \$6.00



Bennett's Star

SDB 2013

Aitken 2013 ML 10" Standards white; Falls peach with sharp $\frac{1}{8}$ " white edge; beards tangerine in throat, yellow in middle, white ends. Price \$6.00

Standard Dwarf Bearded (SDB) Listing



Bluebeard's Ghost

SDB 2006

Black 2006 ML 14.5" White with dark blue beards. HM 2008, AM 2010, Cook 2012

Price \$4.00



Blue Hat Boy

SDB 2007

Chapman 2007, Season Early, Style Bi-Colour, Standards Blue – violet, Falls Taffy and honey blend, Beards Light blue-violet, Substance

Price \$4.00

Standard Dwarf Bearded (SDB) Listing



Burn Notice

SDB 2014

Chapman 2014 EM 13"

Toffee brown plicata markings on intense ground. Heavier on standards. Intense orange beard is very striking. Shouts for attention. \$8.00



Cat's Eye

SDB 2002

Black 2002 M 15" Mauve with veined dark red spot on falls; gold beard. HM AM CD

Price \$4.00

Standard Dwarf Bearded (SDB) Listing



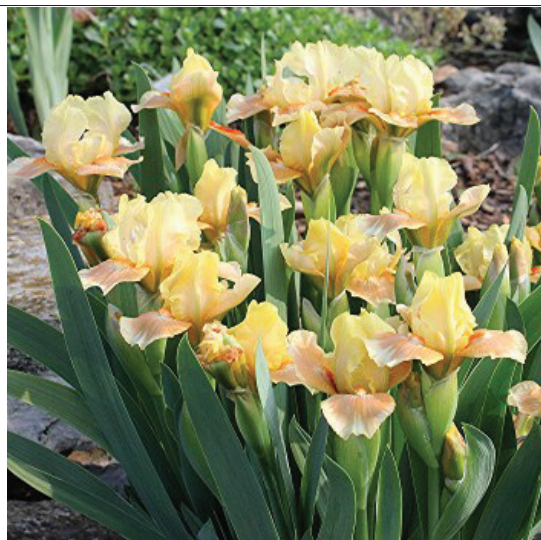
Celebrate

SDB 2007

Black 2007, Season Mid, Style
Plicata, Standards Purple, Falls
Washed purple plicata on white,
Beards Blue

Comments Awards/Year HM '09, AM
'11.

Price \$6.00



Classic Sunrise

SDB 2005

B. Jones 2005, Season Mid, Style Bi-
Colour, Standards Medium yellow,
Falls Rose-orange blending out to
yellow edges, Beards Carrot orange
Price \$4.00

Standard Dwarf Bearded (SDB) Listing



Co-Ed Flirt

SDB 2003

Chapman 2003 E 11" Tan-pink standards and rim on falls; blue plicata inside rim on white falls, tan-pink beard.

Price \$5.00



Cookie Monster

SDB 2013

D Spoon 2013 12" ML S. grey-green , violet-blue edge, erect; style arms violet-blue midrib and crest, violet edges; F. complex blending of grey-green and violet-blue, wide, horizontally flared; beards darker violet-blue, tipped bronze in throat; slight spicy fragrance; ruffled

Price \$6.00



Eramosa Oompa-Loompa

SDB 2012

Chapman 2012 L 14" Standards light tan with purple-violet centre wash; falls sanded brown over white with violet lines at base of beard.

Price \$5.00



Fudge Icing

SDB 2012

Chapman 2012 M 14" EM Standards dusty plum plicata wash and veins on yellow ground. Falls rosy brown wash and plicata veining at edge.

Beard white, tipped orange

Price \$6.00

Standard Dwarf Bearded (SDB) Listing



Going In Circles

SDB 2013

Black 2013 13" E-M S. mid light lilac, grey-blue textured veins; style arms light old gold crests, edge and midrib, mid grey-blue center; F. mid garnet, short white veins beside beards, $\frac{3}{4}$ " mid light lilac band; beards marigold in throat, mid yellow in middle, white at end; slight musky fragrance.

Price \$8.00



In The Zone

SDB 2014

Chapman 2014 16" M Very nicely formed luminata-plicata from Summoned spirit. Washed lilac-pink on white ground. Narrow yellow-tan rim on falls, and hint on standards. Pastel yellow style arms lip. Beard lavender-white, yellow in throat. Very strong grower, masses of flowers.

Price \$8.00

Standard Dwarf Bearded (SDB) Listing



Lookout Sunshine

SDB 2009

Chapman 2009 EM 12" Yellow tinted and lightly veined green; fringed rims, light yellow beard. A wide horizontal flaring flower with lots of substance. A bright light yellow with darker spot that has olive veining in spot area. Lots of small ruffles and just a touch of lace. A real spot of bright colour in the garden. Typical Chapman hardiness.

\$4.00



Missish

SDB 2013

Spoon 2013 ML 13" Medium rose plicata border on peach ground, darker rose veins in hafts and shoulders, solid rose border on lower half, semi-flared; beards cream-white, tips spectrum-red

Price \$7.00

Standard Dwarf Bearded (SDB) Listing



Naked Grape

SDB 2011

Chapman 2011 14" EML S. pastel pink washed dusty light violet, darker at edges; style arms pink; F. pastel pink washed dusty light violet, near solid toward edges, tan pink rims, cream center area below beards, tan hafts; beards tangerine, pale violet at end; slight musky fragrance.

Price \$6.00



Pole Dancer

SDB 2012

Chapman 2012 14" M Heavily washed and stippled purplish-pink plicata on cream ground. Brownish-pink at hafts. Intense wide solid coral beard. Fast grower.

Price \$6.00

Standard Dwarf Bearded (SDB) Listing



Reddy Freddie

SDB 2012

M Sutton 2012 10" EM Standards and style arms fuchsia purple; Falls magnolia purple, cardinal red thumbprint, near black around beards; beards mustard, hairs white tipped mustard; pronounced spicy fragrance

Price \$6.00



Ruby Passion

SDB 2004

Chapman 2004 M 11" Dark ruby Standards & veins & edge on Falls on yellow ground, wide orange beard.

Price \$5.00

Standard Dwarf Bearded (SDB) Listing



Summoned Spirit

SDB 2002

Chapman 2002 ML 12" Dusty yellow rim on grey-violet washed standards and falls; white beard.

Price \$6.00



Sweet and Innocent

SDB 2010

T.Johnson 2010, Season Mid to Late, Style Self

Standards Bright yellow, Falls Bright yellow band around white, Beards Pale yellow to white

Awards/Year HM '12. Eligible for an Award of Merit (AM) in 2016

Price \$6.00

Standard Dwarf Bearded (SDB) Listing



Sweethearts Again

SDB 2004

P Hill 2004 EML & re 14" Standards light pink, purple at base; style arms medium pink; Falls cocoa pink; beards blue, tangerine in throat
Price \$5.00



Toffee Time

SDB 2015

Chapman 2015 EM 11" An intriguing and uniquely colored luminata. Standards a dark mustard yellow with light brown line up center; falls a dark mustard yellow with toffee brown centre, and white luminata spot around beard; beard tangerine on throat half, next segment yellow with last quarter white. Faint sweet fragrance
Price \$10.00

Standard Dwarf Bearded (SDB) Listing



Ultimate

SDB 2003

T. Johnson 2003, Season Mid, Style Bi-Color, Standards Yellow, Falls Mahogany with yellow band, Beards Yellow

Comments Awards/Year HM '06; AM '08; CD '10.

Price \$5.00



Urban Myth

SDB 2011

Chapman 2011 EM14"Dark purple; with white area around white beards, small white dart at end of beards.

Price \$5.00

Miniature Dwarf Bearded(MDB) Listing



Blue Wind

MDB 1982

Spence 1982 E 8" Ruffled diamond
dusted light blue; snow white beard.
HM

Price \$4.00



Tiny Titan

MDB 2002

Aitken 2002 EML 8" Bright orange
self with darker fall lines. HM 2004,
AM 2006, C-W Medal 2009

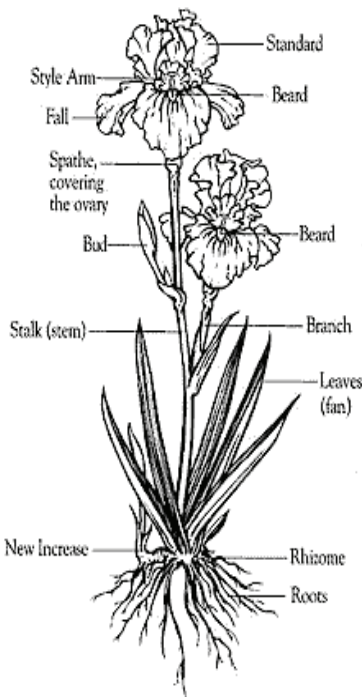
Price \$5.00

We hope that you find yourself some nice new irises in our sale catalogue. Thank you for your participation and kind support of the Canadian Iris Society.

The following segment shows some helpful information on irises:

- Basic components/parts of an iris plant
- Information on the different iris categories.

Basic components/parts of an iris plant:



Falls: the lower three petals of the iris flower.

Standards: the upright top three petals of the iris flower.

Beards: the fuzzy, caterpillar like hairs on the falls, may be thick or thin, self colors or contrasting.

Hafts: the parts of the iris falls to either side of the tops of the beards, also called shoulders.

Anther: stiff, tiny stem like aperture under the style arm

Style arm: the three style arms rest above the anthers. They may be the same color as the iris or may be contrasting colors.

Spathe: the papery, eventually brown, covering of the emerging bud. This papery covering eventually covers the ovary of the iris as the flower emerges from bud stage.

Spur: a short side stem which may or may not be near the top of the stem or stalk

Branch: any branch which appears off the side of the main stem or stalk.

Stalk/Stem: that which holds the flower upright. May be straight or gently S-curved.

Leaves/Fan: grouping of leaves, growing from the iris rhizome underneath that fan of leaves.

Increase: new plants which begin as white waxy looking pointed buds on the sides of the rhizome. Increases provide an exact clone of the original mother plant.

Rhizome: brownish, potato-looking, fleshy portion of the plant that grows at or just below the surface of the soil.

Roots: The true roots that feed and nourish the plant grow downward into the soil from the rhizome.

Information on the different iris categories:

Bearded Irises are identified by thick, bushy "beards" on each of the falls (lower petals) of the blossoms. Originally, most of these were native to central and southern Europe. The (AIS) American Iris Society has divided the bearded irises into six groups for garden judging awards. The term **median irises** refers to all the bearded irises except the miniature dwarfs and the tall bearded; that is the SDBs, IBs, BBs and the MTBs.

1. Miniature Dwarf Bearded (MDB) -- the tiniest of bearded irises, with height of up to 20 cm (8 inches). They are also the earliest to bloom. They are most effective in rock gardens or planted in drifts where they make a "carpet of color."

2. Standard Dwarf Bearded (SDB) -- some of the most useful garden plants, ranging in height from 20 cm (8 inches) to 41 cm (16 inches). They begin their bloom as the MDBs are ending, still quite early in the iris season. They are best displayed in clumps where they give the effect of a "cushion" of individual blooms. The colors are nearly unlimited since the SDBs show all the different "spot patterns" of the miniatures, as well as the plicatas and pinks seen in the TBs.

3. Intermediate Bearded (IB) -- stand from 41 cm (16 inches) to 70 cm (27 1/2 inches) high, with their bloom season overlapping the SDBs and the TBs. Although the IBs show their dwarf ancestry in early bloom season and very interesting color patterns, they are large enough that their individual stalks may be nicely branched, forming an elegant bouquet. Some varieties are nicest in clumps, where they present a large amount of color (like the SDBs), while others are showiest in specimen plantings, where the stalks and individual blooms may be seen to best advantage.

4. Border Bearded (BB) -- essentially small versions of the TBs in the same height range and bloom size as the intermediates, but blooming with the tall bearded. Good BBs have round, ruffled petals that complement their small size.

5. Miniature Tall Bearded (MTB) -- this class is distinguished by daintiness and delicacy. Height from 41 cm (16 inches) to 70 cm (27 1/2 inches). The blooms are smaller than on a BB and the stems are thin and wiry. A clump of MTB iris in bloom looks like a mini-cloud of butterflies. They are often called "table irises" because they are so well suited for arrangements.

6. Tall Bearded (TB) -- have stalks with a height of 70 cm (27 1/2 inches) and above, with branching and many buds. Each stalk, in itself, makes a stately arrangement in the garden or in a vase. In addition to a wide variety of colors and patterns, the TBs display other qualities (such as ruffling and lacing) more frequently than do the other classes.

Thanks again and enjoy your new plants.



TERRA GREENHOUSES

For all your gardening or landscaping needs
Visit our corporate sponsor
at one of their sites



Terra Greenhouses
2273 #5 Highway
Burlington, ON
(between Brant St.
& Guelph Line)
T: 905.332.3222

Terra Greenhouses
11800 Keele Street
Vaughan, ON
(one block north of
Teston Road)
T: 905.832.6955

Terra Greenhouses
280 Britannia Rd.
Milton, ON
(just West of Trafalgar)
T: 905.876.4000

Terra Greenhouses
#8 5th Concession
Waterdown, ON
(3 km north of
Clappison's Corners)
T: 905.689.1999



Where colour lives!

www.terragreenhouses.com

You too, could have your ad on this page.

The Payne Medal

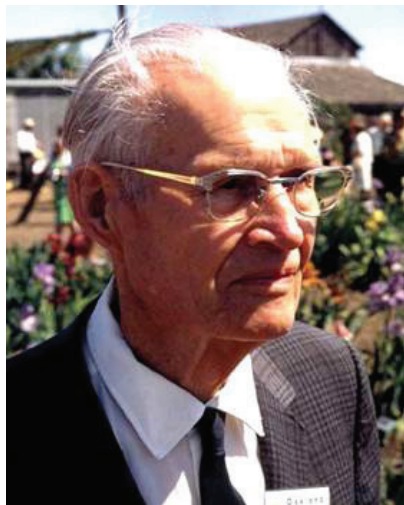
Compiled by Ann Granatier

The highest award given by the American Iris Society strictly to Japanese Irises. (History from Clarence Mahan: Awards; 2015 Payne Medal Candidates.) This medal is restricted to Japanese irises (JI). It is named in honor of W. Arlie Payne (1881-1971).

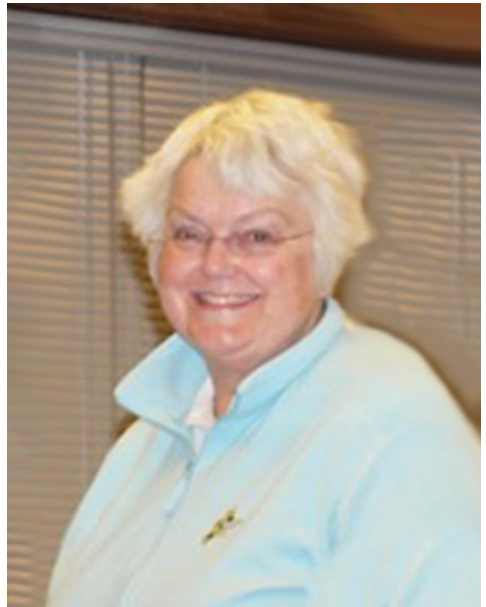
W. Arlie Payne was born on a farm near Terre Haute, Indiana. He graduated from Central Normal Collage in Danville, Indiana, and studied pattern making. Payne worked as a lumberjack, photographer, real estate agent, and pattern maker until he established a landscaping business on sixteen acres of land south of Terre Haute.

He was at first especially interested in peonies, but in the late 1920's, he "discovered" Japanese irises. He started hybridizing Japanese in irises in 1932. Over the next three and a half decades, he raised many thousands of seedlings.

During the 1930's and .1940's, there was a sharp decline in the popularity of Japanese irises in the United States, especially during the period of WW II. One of the few nurseries on the West Coast that continued to offer them for sale renamed them "Pearl Harbor irises." Arlie Payne continued his, extensive breeding program striving to produce "a race suitable for outdoor American plants." He sought a beautiful flower of symmetrical form and a plant that demonstrated exceptional vigor. One of the most exceptional aspects of his breeding program was that it was developed in the early years using only six cultivars of the Edo type. Payne took line breeding to a new level of intensity.



W. Arlie Payne



Arlie Payne did not start introducing his irises until the early 1950's. When he did, it was apparent that he had developed a strain of wonderful new Japanese irises. He ultimately

registered 170 cultivars, most of which were of exceptional quality. When his new cultivars were sent to Japan, the Japanese were astonished to see their diversity and quality. The gigantic maroon, 3-fall cultivar ‘The Great Mogul’ (1958) was especially admired by Japanese specialists. Payne cultivars took the Gold, Silver and Bronze Medals in the Internationale Garten Ausstellug in 1963. ‘The Great Mogul’ won the Silver Medal at the Vienna Intenationale Gartenschaus in 1964, and ‘Confetti Shower’ won the Bronze Medal at the same event.



The American Iris Society awarded Arlie Payne its coveted Hybridizers Medal in 1964. When he died at the age of 90, in 1971, he was universally revered as the world’s premier breeder of Japanese irises.

From the Society for Japanese Irises (SJI):

The Payne Medal (named for W. Arlie Payne) is the highest award given by the American Iris Society that a Japanese iris can receive in its class. Payne Medal winners are then eligible to win the Dykes Medal, which is the highest award an iris can receive from The American Iris Society. Prior to 1992 the highest award a Japanese Iris could receive was the Payne Award. This award has now been elevated to a medal status.

List of Payne Medal winners - Japanese (JI) Irises:

1992 - ‘Japanese Pinwheel’ - McEwen	1991 - ‘Lilac Peaks’ - Vogt	1990 - ‘Caprician Butterfly’ - Marx
1989 - ‘Blueberry Rimmed’ - McEwen	1988 - ‘Oriental Eyes’ - Vogt	1987 - ‘Freckled Geisha’ - Reid
1986 - ‘Ipsus’ - Innerst	1985 - ‘Blue Marlin’ - Copeland	1984 - No Award
1983 - ‘Raspberry Rimmed’ - McEwen	1982 - ‘Returning Tide’ - McEwen	1981 - ‘Fuji’ - Abel
1980 - ‘Purple Parasol’ - McEwen	1979 - ‘Prairie Velvet’ - Hazzard	1978 - ‘Tuptim’ - Rich
1977 - No Award	1976 - ‘Stranger In Paradise’ - Hager	1975 - ‘Prairie Love Song’ - Hazzard
1974 - No Award	1973 - ‘Hue And Cry’ - Maddocks	1972 - No Award
1971 - ‘Numazu’ - Hazzard	1970 - ‘Worley Pink’ - Worley	1969 - ‘Star At Midnight’ - Rich
1968 - ‘Dancing Waves’ - Payne	1967 - ‘Leave Me Sighing’ - Maddocks	1966 - ‘Strut And Flourish’ - Payne



Raised Gardens

By Ed Jowett

A colleague of mine saw my slide presentation and said I should write about it in the bulletin. I have tried to make synopses from it.

What is a raised garden bed?

A raised garden bed is any garden made on top of the native ground and may or may not include native soil... (This is the only definition I have found.)

Raised Garden

Plan and layout your bed on paper first

Why do we want a raise garden? There are multiple reasons ,some being;

- Poor soil conditions,
- Poor health,
- Uneven ground,
- Year round gardening,
- Architectural looks,
- Easier maintenance and others...

The benefits of building raised beds; easy solution, work around bad soil, easier repetitive plant care, warms more quickly in the spring.

You should be able to reach the middle of the bed from either side or end; no pant should be out of reach...

What do I want to grow in my raised bed?

- Vegetables
- Flowers
- Shrubs
- Combination

Why have I chosen a raised bed?

- Better drainage
- Looser soil
- Soil selection
- Lesser maintenance

The things affecting my raised bed

- Location - Should have full sun most of day
- Design – use your imagination
- Drainage – should have at least 2” gravel base
- Material selection– Many materials available ;(wood, Stone pavers, Brick etc)
- Cost – expensive to build but cheaper maintenance cost later

Problems that may arise afterwards

- You find not big enough for all plants you planned for...
- Your yard is too small for design
- Initial cost to high.

Ten tips for successful raised bed gardening

- Don't ever ever walk on the soil
- Mulch after planting
- Plan your irrigation system
- install a barrier to roots and weeds
- Top- dress annually with compost
- Fluff the soil with a garden fork as needed
- Cover up your soil, even when you're not gardening
- Plant annual cover crops
- think ahead to extend the season
- Consider composting directly in your raised bed garden.

Making a raised bed

Determine the size and shape of bed you want. Prep your site by leveling and placing a large 3" gravel base on top of landscape cloth for good base and drainage. Consider how you are going to water you may want to install a irrigation system. Construct your bed with timber or any materials you are using to contain the bed, when completed and well anchored.. Fill with soil mixture. Plant, water and enjoy.



Photo courtesy of www.owenchubblandscape.com Dublin - Ireland



Editors Note

My reason for the raised bed was for easier maintenance, to keep rhizomes from getting to each other on two sides. It is 4 tiered to keep flower height somewhat even. TB's on lowest level and MDB's on the highest and the rest in between.. It is built on the side of a terrace. Holding 60 irises, all labeled. Only 1 row 18" apart per tier.

Southern Ontario Iris Society

News, Views and Coming Events

For those who are not A.I.S. members and live in Ontario you are in A.I.S. region 2 and as SOIS is an affiliate we are bring you news of what is coming and happening in Region 2. There is a new RVP for this region for which we have included her greetings. There are a couple of things happening this year close to home for Ontarians, the annual A.I.S. convention in Newark New Jersey in May, with registrations completed by May 1st/2016 (see elsewhere in bulletin). Region2 annual meeting in October with registrations completed by late September.

Coming events It's not too early to plan. Plan now to attend

AIS Region2 Conference

Hosted by WNYIS and friends

2 Days Friday & Saturday Oct 14&15/2016

Marriott Fairfield Inn and Suites, Buffalo Airport, 4271 Genesee St, Buffalo, N.Y.



Tentative program

Friday

Registration 5 – 6 PM

Reception with light refreshments 6 – 7 PM

Opening of Silent Auction

2016 AIS Convention slides with discussions 7 – 7.45 PM

Audit committee meeting following

Saturday

Directors meeting 8 to 10 AM

Speaker (Carol Warner) presentation 10 – 10.45 AM

General membership meeting 11 – 12.30 PM

Lunch 12.30 – 1.30 PM (live auction of beardless iris (pseudata) during desert benefit WNYIS)

break and tally 1.30 – 2 PM

Judges Training 2 – 4 PM

Goodbyes Auction pick up and pay 4 – 4.20 PM

Come and meet previous and new friends. (For those who are members after 2003 these are the friends who helped us to host the 2003 Siberian Convention in Burlington at the RBG.) We all have the same interest at heart.

Will I see you there?

If you have any questions about this conference contact Carolyn Schaffner at drsnooks@twc.com

June 5th /2016 we will be hosting our annual Show and picnic,

SOIS Show @ RBG

600 Plains rd West (the pit), Burlington, On

9.30 a.m. - 11.00 a.m. staging, 11.00 a.m. - 1.00 p.m. judging

1.00 p.m. - 3.30 p.m. open to public viewing

Sunday Aug 14/16 SOIS rhizomes sale

Royal Botanical Gardens

600 Plains Road west, Burlington, On

(Ground floor next to restaurant)

setup 10.00 A.M. – 1.00 P.M.

open for sale 1.00 A.M. - ?

Picnic at Trails End Iris Gardens Show at RBG. More details later. Remember this should be prime time blooming period so come out and see the beauty and enjoy the fellowship.



Join the American Iris Society

\$30.00 one year, \$70 for three years

Send payment to:

Tom Gormley—AIS Membership Secretary
205 Catalonia Avenue
P.O. Box 177
DeLeon Springs, FL 32130

Phone and Fax: 386-277-2057

Email: aismemsec@irises.org

or visit: www.irises.org for more details



Your new AIS RVP's for the regions aligned with Canada:

Region 1 Maine, New Hampshire, Vermont, Massachusetts, Connecticut, Rhode Island, **Newfoundland/Labrador, Nova Scotia, New Brunswick and Prince Edward Island**

Linda Corapi lindacorapi@gmail.com

12 Hillside Rd #206, Stoneham, MA 02180

Region 2 New York, **Ontario and Quebec**

Dorothy Stiefel irisacher@aol.com 607-589-7465

260 Michigan Hollow, Spencer, NY 14883

Region 13 Washington, Oregon, Alaska, **British Columbia and Yukon**

Bob Seaman kcisbob@leonineiris.com

7051 S 126th St, Seattle, WA 98178

Region 21 Iowa, Nebraska, South Dakota, North Dakota, **NWT, Nunavut, Alberta, Saskatchewan and Manitoba**

Linda Wilkie lrwilkie@gmail.com

15115 Grand Circle, Omaha, NE 68116

AIS newly updated web site: www.irises.org

Coming Dates to Remember

2016 Board Meeting Dates

Sunday July 17, 2016	1:30 pm – 4:00 pm
Sunday October 16, 2016	1:30 pm – 4:00 pm
Sunday January 15, 2017	1:30 pm – 4:00 pm

2016 CIS Annual Show

Sunday June 5, 2016	9:30 am – 4:00 pm
Set up	9:30 am – 11:00 am
Judging	11:00 am – 1:00 pm
Open to the Public	1:00 pm – 3:30 pm
Royal Botanical Gardens	

2016 CIS Annual Picnic

Sunday June 5, 2016
Trails End Iris Gardens, Pot luck, Burgers and Dogs supplied

2016 SOIS Annual Sale

Sunday August 14, 2016	1:00 pm – 3:30 pm
Royal Botanical Gardens	

2016 CIS Annual Meeting

Sunday October 16, 2016	2:30 pm – 4:00 pm
Royal Botanical Gardens Plains Road West, Burlington	

2016 Publication Dates

August 2016	Vol 60 No 3 Summer Issue
November 2016	Vol 60 No 4 Autumn Issue

Coming Events

West Australian Iris Society
Iris Convention October 2017
Perth Australia (Details to be fully confirmed later)
Registrations and Welcoming dinner Monday Oct 16th
Farewell Dinner on Thursday October 19th
Bus tours being discussed at the moment for Saturday,
and also a free day to see many of Perth's attractions

Canadian Sources for Irises

We provide this listing as a resource for our members and readers. This listing does not necessarily imply endorsement of the businesses by Canadian Iris Society (CIS). The sources listed have paid donations/contributions to help support the society. If you know of someone who should be added to the list please send the information to the editor. The listings in BOLD are members of the CIS

Chapman Iris

RR #1 8790 Wellington Road 124,
Guelph, ON N1H 6H7
Phone: 519-856-0956
Email: chuck@chapmaniris.com
Website: www.chapmaniris.com
On-line catalogue: \$3.00

Tara Perennial Farm

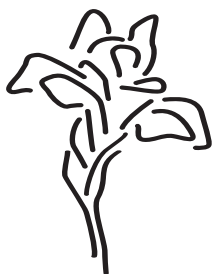
123 Concession # 6, RR2
Tara, ON N0H 2N0
Call for availability/price list
Marion Kuhl 519-934-3447
Website: www.taraperennialfarm.com

Erin Mills Iris Garden/ Chris Hollinshead

3070 Windwood Drive, Mississauga,
Ontario L5N 2K3 Canada
Email: erinmillsiris@gmail.com
Website: www.cdn-iris.ca/erinmills

Trails End Iris Gardens

3674 Indian Trail, RR#8
Brantford, Ontario N3T 5M1
Phone: 519-647-9746
Email: bob@trailsendiris.com
Website: www.trailsendiris.com
On-line catalogue



CIS Membership

Not sure of your Canadian Iris Society (CIS) membership term? Check your mailing label of the CIS newsletter for your current CIS membership term dates. If you receive the electronic version of the CIS Newsletter and you wish to know this information please e-mail the CIS membership chairman at cdniris@gmail.com and we will be pleased to advise you.

Early renewals are always appreciated.

Liaisons and Regions



British Columbia Iris Society (BCIS)

Ted Baker, 185 Furness Rd.,
Salt Spring Island, BC V8K 1Z7
ph: 250-653-4430 www.bc-iris.org

Can-West Iris Society

B.J. Jackson, 2421 McDonald Avenue, Brandon, MB R7B 0A6,
ph: 204-725-4696 email: jacksonb@mts.net

Southern Ontario Iris Society (SOIS)

CIS - AIS Affiliate

Chris Hollinshead, 3070 Windwood Drive,
Mississauga, ON L5N 2K3
ph: 905-567-8545 e-mail: cdniris@gmail.com

London Region Iris Society

Gloria McMillen, PO Box 385, Otterville, ON N0J 1R0
ph: 519 532-2364 email: gmcmlen@execulink.com
Please inquire for membership and group activities.

cis website
www.cdn-iris.ca

up-to-date information on CIS activities and many useful links to other iris sites and information

**Canadian Iris Society
1960 Sideroad 15, RR#2
Tottenham, ON L0G 1W0**



Walker Ross

CIS Newsletter

Published four times a year at
Canadian Iris Society
1960 Sideroad 15, RR#2
Tottenham, ON L0G 1W0

Publication Agreement #41247546