

---

# Canadian Iris Society

## cis newsletter

Summer 2010 Volume 54 Issue 3

---



# Canadian Iris Society

## Board of Directors

---

### Officers for 2010

Editor & President	<b>Ed Jowett</b> , 1960 Sideroad 15, RR#2 Tottenham, ON L0G 1W0 ph: 905-936-9941 email: jowettfarm@copper.net	2008-2010
1st Vice President	<b>John Moons</b> , 34 Langford Rd., RR#1 Brantford ON N3T 5L4 ph: 519-752-9756	2008-2010
2nd Vice President	<b>Harold Crawford</b> , 81 Marksam Road, Guelph, ON N1H 6T1 ph: 519-822-5886 e-mail: hrcrawford@rogers.com	(Honorary)
Secretary (interim)	<b>Ann Granatier</b> , 3674 Indian Trail, RR#8 Brantford ON N3T 5M1 ph: 519-647-9746 email: ann@trailsendiris.com	2010-2012
Treasurer	<b>Bob Granatier</b> , 3674 Indian Trail, RR#8 Brantford ON N3T 5M1 ph: 519-647-9746 email: bob@trailsendiris.com	2010-2012
Membership & Webmaster	<b>Chris Hollinshead</b> , 3070 Windwood Dr, Mississauga, ON L5N 2K3 ph: 905 567-8545 e-mail: cdn-iris@rogers.com	2010-2012

---

### Directors at Large

Director	<b>Gloria McMillen</b> , RR#1 Norwich, ON N0J 1P0 ph: 519 468-3279 e-mail: gmcmillen@execulink.com	2008-2010
Director	<b>Eleanor Hutchison</b> , Box 13 Group 55, RR#1, St. Anne, MB R5H 1R1 email: eleanore@mts.com	2009-2011
Director	<b>Nancy Kennedy</b> , 221 Grand River St., Paris, ON N3L 2N4 ph: 519-442-2047 email: xkennedy@sympatico.ca	2010-2012
Director	<b>Alan Mc Murtrie</b> , 22 Calderon Cres. Willowdale ON M2R 2E5 ph: 416-221-4344 email: alan.mcmurtrie@gmail.com	2010-2012
Director	<b>Pat Loy</b> 18 Smithfield Drive, Etobicoke On M8Y 3M2 ph: 416-251-9136 email: pat_loy@yahoo.ca	2010-2012

---

### Honorary Directors

Hon. Director	<b>Dr. Leslie Laking</b> , 224 - 50 Hatt St, Dundas ON L9H 0A1 ph: 905-315-2595
Hon. Director	<b>David Schmidt</b> , 18 Fleming Ave., Dundas, ON L9H 5Z4
Hon. Director	<b>Verna Laurin</b> , 3 Golfink Dr Unit 216 Aurora ON, L4G 7Y4

---

Newsletter Designer	<b>Vaughn Dragland</b> ph. 416-622-8789 email: v Vaughn@e-clipse.ca
---------------------	--

# Table of Contents

President's Report	2
New & Newsworthy (Nancy Kennedy)	4
Garden Diggings (Christopher Hollinshead)	7
American Iris Society – AIS Awards 2010	9
Canadian Iris Society – Annual Awards 2010	18
Iris Perfect for Water Gardens (Vaughn Dragland)	20
Terra Greenhouses	26
Report from Ottawa Region (Sandy Ives)	27
Canadian Iris 1896-2008 (McQueen / Chapman)	28
CIS Iris Sale (Christopher Hollinshead)	50
CIS Board Meeting Minutes – April 2010	53
Musings From Manitoba (B. J. Jackson)	55
Eclipse Design Studio	59
Remembering Verna Laurin	60
Garden Notes	62
Coming Events and Dates to Remember	63
Canadian Sources for Irises	64
Liaisons and Regions	65

Cover photo “Koi Pond with Iris”  
by Cornelia Dragland

# Presidents Message

By Ed Jowett



It is with great sorrow that we report the passing of our long time secretary **Verna Laurin** who passed away May 21/10. Verna gave many hours to CIS and all its events; both as secretary and master judge.

Firstly I would like to thank the judges who traveled long distances for our show. Thanks go to **Maureen, Emily, Sandy, and Ken**. I also want to thank our local judges **Sylvia and Chuck**. Thanks also to our judges in training **Ann and Nancy**. A

special thank you to **Maureen** for her judges' training in the wet weather. In spite of the off-again-on-again showers it seems everyone present enjoyed the picnic.

We had a total of fourteen who braved the weather for this occasion.

I would like to thank the exhibitors who made it possible for our show to succeed. Thanks to those seven people. See the show results farther on in this issue.

Our iris purchase kind of surprised me; we have about fifty per cent of the Tall Bearded left which we will offer at our annual sale (at a higher price of course). All of our Medians went real fast and sold out early.

With our Annual General Meeting coming up soon, and election of officers, we hope to see more of our members out. This year we are going to hold it along with our sale; which will also have a different concept.

I had a letter about the Iris purchase, asking if we could not print pictures or descriptions of each. This is a point well taken. I explained to this member the cost was too great to print color. I suggested to this member that if he visited the local library, with the help of the librarian he would be able to look at them on the Web. You do not need any computer experience for this. Most librarians are willing to show you, and in five minutes you are away. Even for a time of dreaming this can keep you in awe.

It is great to see WCIS had a good show at the same time as ours but many more blooms. More about this and pictures further on in this bulletin. It is nice to hear and see results from others.

I would like to give praise to **Don McQueen** and **Chuck Chapman** for the many hours they put in to compile the "Canadian Hybridizers Breeding Program".





Draglands" backyard water garden, featuring three varieties of water iris.  
(Photo taken by Cornelia Dragland July 1, 2010)

---

Our cover this time shows what imagination and hard work can produce in a small city back yard. Great pond Vaughn & Cornelia! Read the article on page 20 of this issue.

Pat, we wish you a speedy recovery from surgery.

I hope to see a lot of you at the **Sale & AGM!** And I hope your flowers bloomed well for you this season, even though most areas were a couple of weeks early. I think I only had about fifty percent of my Irises bloom—too much rain I believe.

Till next time happy gardening and have a great Fall.



Sincerely,

*Ed Jowett*

Ed Jowett, Editor & President

---

**Editors Note:** The comments and statements in this bulletin are those of the writers and not necessary those of the board or society.

# NEW AND NEWSWORTHY...

By Nancy Kennedy



At this point in the season, most of us have already planned, bought and paid for this year's new iris acquisitions. By the time this Newsletter is delivered, those new acquisitions may in fact be in the ground.

Most of us however, when thinking of iris, immediately gravitate toward the ever-popular and highly-acclaimed tall-bearded varieties, of which there are literally tens of thousands of cultivars in commerce to choose from. The hybridizers of today seemingly introduce new varieties numbering perhaps into the thousands each year. Other types of irises are all too frequently overlooked by near everyone, so I thought a short essay on just a few of these equally lovely plants might be in order. My own collection of bearded irises has grown to 300+ varieties, so I too am in search of something to complement the aesthetics of the garden as well as to extend the bloom season.

There are irises in art and medicine, irises for scent, colouring and flavor, irises for cut flowers, irises small and tall— indeed for nearly every application in the garden. There are irises barely an inch or two in height, and some towering upwards of six feet, competing with ornamental grasses in size and volume— yet with much nicer flowers.

The beardless irises, or apogons, comprise some 16 types (or series) in this subgenus of the *Iris* family. Some will grow for us only under highly select conditions (i.e. Pacific Coast Iris) yet others grow with no effort whatsoever on the part of the gardener, save for a few basic necessities (think light and water).



Siberian iris - "Gatineau" (Preston 1932)

*Siberian iris* is the most tolerant of all the iris groups and will thrive in a range of conditions. They are suitable for borders, wild or cottage gardens and/or along the edges of ponds; they just don't do well growing in water. Their preferred site is indeed partial shade, an added bonus. They can be very tall and an established clump needs a lot of room. They rival ornamental grasses in appeal after bloom season, are prone to few diseases and need very little attention once established— a bonus for today's busy lifestyle. Colours are generally of the blue/white/yellow spectrum, but now including pinks and lavenders. Sibi's generally bloom along

with the mid-season tall-bearded iris, yet are different and really nice to have around. There are many hybrids out there of varying shapes and sizes.

*Iris chrysographes* “**Black Form**”, a Siberian iris species hailing from China, is a personal favourite as it is truly a dainty velvety black flower with gold flecks here and there, dancing amongst the petals.

*Japanese and Louisiana iris, including Pseudacorus*, love the water and are attractive grown at pond’s edge, but in fact will grow in a wide range of locations, just don’t let them dry out. *Pseudacorus* in particular will grow anywhere and in some locales is labelled invasive. *Japanese iris* is extremely decorative and makes beautiful cut flowers. Their colours are limited to blue/purple/white combos but have such eye-popping beauty that they are truly mesmerizing, some with bright gold signal flashes, prominent veining and broken patterns. The standards here are miniscule while the falls are huge, round, ruffled and overlapping. Some flowers are absolutely enormous in comparison to their strap-like leaves. Generally speaking, they range 3 to 4 feet in height; some are even taller. They’re even happy growing in a large pot, in standing water, unlike most irises.

*Louisiana iris* is by far the most colourful of the beardless. They are in fact a native American flower, born in the backwaters of the Mississippi River, but grow well in all parts of the country (theirs and ours), adapting to a wide range of soils/climates, needing only sun, ample water, and a neutral soil to thrive. Louisiana iris are superb pond plants but do not require pond culture. Their spectacular array of colours is incredible too. Looking not unlike a large exploded Siberian iris, style arms splayed over standards, splayed over falls—and oh so elegant when viewed from above.

*Pacific Coast iris* is equally as colourful and indeed beautiful, but best grown where their name belies their existence; they don’t like living inland, unless of course one has the time and patience to recreate their environment. Beautiful flowers they are and no doubt will reward the gardener with joy if their growing conditions are met. Pacific Coast iris apparently has a poor survival rate when shipped as bare root divisions, but fortunately can apparently be easily started from seed.



*Pseudacorus* “Variegated”



Louisiana Iris “Purple Majesty”



To end the bloom season, before tall-bearded begin their rebloom, *Spuria iris* put on a terrific show. These tall, statuesque and dramatic giants of the iris family, averaging some 5 feet tall are also called “butterfly iris”. The large flowers have long slender petals with long arching style arms. The colour range is limited here also, but notably some dark mahogany red, brown and bronze varieties are available— really, really dark. Spuria are often overlooked and indeed are a rare sight in gardens. They make impressive, long-lasting cut flowers and dislike being disturbed, consequently grow slowly for 10 years into an established clump. They require nothing more than a fertile soil, some water and a bit of feeding. A low-maintenance iris you might say...



www.chapmaniris.com

Spuria iris - “Cinnabar Red” (Niswonger 1979)

Chapman Iris has a substantial variety of beardless iris in addition to all the bearded varieties and currently Gardenimport in Toronto is offering quite a few Spuria for sale. Siberian iris can be found at most garden centers. A perusal of various Web sites for these types of iris will turn up many an amazing plant. Why not try something different in your garden— try some Spuria or Siberian, Japanese or a Louisiana—or several...

**One final newsworthy item** – hopefully this Newsletter reaches CIS members in time to remind all about the upcoming Iris Sale and AGM (Annual General Meeting) at the Royal Botanical Gardens to be held August 15— not to be missed. Check elsewhere in the Newsletter for details. See you at the sale!



# Garden Diggings: American Iris Society – AIS Awards 2010

By Christopher Hollinshead

This time of year brings the announcement of the annual AIS (American Iris Society) Awards. These awards are the results of the annual voting on a ballot of qualifying irises by AIS accredited iris judges. You may recognize some of these irises names and perhaps you even grow some of them. If you don't already grow them, then perhaps you should so that you don't miss out on enjoying something excellent from the world of irises. It is interesting and insightful for your future iris acquisition considerations. The full listing of the 2010 award winners is provided below.

...and as always, happy garden digging.

— C. H.



## Awards Qualifications

The following is a brief explanation of the qualifications for the awards. The AIS is recognized as the official world registry of iris varieties and as such its awards are held in very high regard internationally.

**Dykes Memorial Medal:** The Dykes Medal is the highest award of the AIS. Awarded to no more than one iris per year. Named for one of the co-founders of the AIS, **William Rickatson Dykes** (1877-1925). It is open to iris from any category starting the year after they first win the medal award of their own category. They are then eligible to compete for 3 years, plus when an iris from a particular category wins the Dykes Medal, the following year both the category medal winner and 1st runner up in that category become eligible to move into the Dykes medal competition. Only AIS registered judges may vote.



*"Garden Diggings" is a regular column in the CIS Newsletter. **Chris Hollinshead** lives in Mississauga, Ontario with his family, an ever-evolving garden and lots of irises. He may be reached by e-mail at: [cdn-iris@rogers.com](mailto:cdn-iris@rogers.com).*

**Medals:** There are Medals awarded to irises of each specific category type and they are eligible the second year after receiving an Award of Merit (or equivalent). One medal for each classification is given each year. Only AIS registered judges may vote.

### **The Medal awards and the various categories:**

- John C. Wister Medal: - Tall Bearded (now 3 awarded each year)
- Caparne-Welch Medal: - Miniature Dwarf Bearded
- Cook-Douglas Medal: - Standard Dwarf Bearded
- Hans and Jacob Sass Medal: - Intermediate Bearded
- Williamson-White Medal: - Miniature Tall Bearded
- Knowlton Medal: - Border Bearded
- C. G. White Medal: - Aril
- William Mohr Medal - ArilBred
- Sydney B. Mitchell Medal: - Californicae
- W. A. Payne Medal: - Japanese
- Mary Swords Deballion Medal: - Louisianas
- Morgan-Wood Medal: - Siberian
- Eric Nies Medal: - Spurias
- Randolph-Perry Medal: - Inter species
- Founders of SIGNA Medal: - Introduced species clone

**Award of Merit (AM)** awards are given to irises from each classification each year. Any iris is eligible the second year after previously winning an Honorable Mention (HM). Only AIS registered judges may vote.

**Honorable Mention (HM)** awards are awarded each year to irises of each classification. Registered bearded irises are eligible the second year after introduction. Registered beardless irises are eligible the third year after introduction. Only AIS registered judges may vote.

There are several popularity awards as well. These awards are voted on by any AIS members (not necessarily judges). These are voted on at AIS National and Regional conventions and by symposium ballot. These awards include the President's Cup, the Cook Cup, etc.





# THE 2010 DYKES MEDAL WINNER

Tall Bearded “PAUL BLACK” (Thomas Johnson)



Photo: **PAUL BLACK** a 2003 tall bearded iris introduction by hybridizer **Thomas Johnson**. Dykes Medal winner 2010, Wister Medal 2009, AM 2007, HM 2005. At the 2004 AIS Convention in Fresno, California, this iris was voted most the popular iris seen in convention gardens from a hybridizer outside of the host region (AIS Region 14). For this it received the Cook Cup, an annual award of the AIS Convention. Height: 42 inches Season: Mid-Late. This dark purple self demonstrates all around excellence. Show-bench stems bear 11-12 triple-socketed buds. Large flowers have excellent ruffled form and are smoothly saturated in dark purple color. The dark orange beards create a fascinating color combination and a pronounced spicy fragrance enhances its appeal.

# AIS Awards 2010

(\*\*Number of votes listed first)

## THE DYKES MEDAL

(Total votes cast = 456)

58 PAUL BLACK (Thomas Johnson)

### Runners Up:

51 DAUGHTER OF STARS (Donald Spoon)  
45 STARRING (Joseph Ghio)  
32 DRAMA QUEEN (Keith Keppel)  
26 HOLLYWOOD NIGHTS (Roger Duncan)  
25 CAT'S EYE (Paul Black)  
23 MILLENNIUM FALCON (Brad Kasperek)

## THE JOHN C. WISTER MEDAL – TB

(Total votes cast = 1190)

84 DECADENCE (Barry Blyth)  
57 WINTRY SKY (Keith Keppel)  
56 CRACKLING CALDERA (J. T. Aitken)

### Runners Up:

50 TOUR DE FRANCE (Keith Keppel)  
42 GOT MILK (J. T. Aitken)  
32 CELESTIAL EXPLOSION (Richard Tasco)  
31 OKAPI POPPY (Brad Kasperek)  
28 CHIEF JOHN JOLLY (Tom Parkhill)  
28 OREO (Keith Keppel)  
27 DOROTHY DAVENPORT (Hooker Nichols)  
26 LADY OF LEONESS (Donald Spoon)

## THE KNOWLTON MEDAL – BB

(Total votes cast = 247)

79 EYE CANDY (Keith Keppel)

### Runners Up:

49 BERMUDA TRIANGLE (Anna & David Cadd)  
48 BE MY BABY (Paul Black)  
37 HEART OF AFRICA (Brad Kasperek)  
34 CONGO BONGO (Brad Kasperek)

## THE HANS AND JACOB SASS MEDAL – IB

(Total votes cast = 316)

81 RUBY SLIPPERS (Keith Keppel)

### Runners Up:

73 CONCERTINA (George Sutton)  
37 SPICED PEACHES (Paul Black)  
36 JUMP START (Keith Keppel)  
31 DUDE (Keith Keppel)  
31 MARIPOSA WIZARD (Richard Tasco)

## THE WILLIAMSON-WHITE MEDAL – MTB

(Total votes cast = 279)

65 SAILOR'S DREAM (Kenneth Fisher)

### Runners Up:

62 DANCING LILACS (Stephanie Markham)  
60 MISSUS BEE (Charles Bunnell)  
48 THAT'S RED (Kenneth Fisher)  
44 CONNECT THE DOTS (Lynda Miller)

## THE COOK-DOUGLAS MEDAL – SDB

(Total votes cast = 304)

54 ULTIMATE (Tom Johnson)

### Runners Up:

40 FIRES OF FIJI (Paul Black)  
33 BOURGEOIS (Paul Black)  
32 BLUEBERRY TART (Chuck Chapman)

## THE CAPARNE-WELCH MEDAL – MDB

(Total votes cast = 195)

55 CHEMISTRY (Paul Black)

### Runners Up:

48 FISSION CHIPS (Keith Keppel)  
38 POKEMON (George Sutton)  
32 PIXIE KISSES (A. & D. Willott)

## THE CLARENCE G. WHITE MEDAL – AR and AB

(Total votes cast = 100)

40 RIVERS OF BABYLON (Lowell Baumunk)

### Runners Up:

21 PINK SERAPH (Howard & Irene Shockey)  
16 MASADA'S GLORY (James Whitely)  
14 KALIFA'S FORTUNE (Robert Annand)

## THE WILLIAM MOHR MEDAL – AB

(Total votes cast = 51)

28 ULALENA (George Sutton)

### Runners Up:

18 RETURN TO AGA (Robert Annand)  
5 KARAMEL PIZAZZ (D. L. Shepard)

## THE FOUNDERS OF SIGNA MEDAL – SPEC

(Total votes cast = 141)

54 RASPBERRY SLURP (Rita Butler)

### Runners Up:

39 VERSICLE (Marty Schafer/Jan Sacks)

26 FOXCROFT FULL MOON  
(Katharine Steele)

22 CROUCHING TIGER  
(Eric & Bob Tankesley-Clarke)

## THE RANDOLPH PERRY MEDAL – SPEC-X

(Total votes cast = 195)

80 ALLY OOPS (Dana Borglum)

### Runners Up:

44 FOR JAY (Jill Copeland)

32 LITTLE CAILLET (Ken Durio)

23 SIBTOSA DUCHESS (Tomas Tamberg)

## THE SYDNEY B. MITCHELL MEDAL – CA

(Total votes cast = 54)

20 WILD SURVIVOR (William Plotner)

### Runners Up:

10 STAR OF WONDER (Joseph Ghio)

9 BLUE PLATE SPECIAL (Joseph Ghio)

8 SANTA ROSALITA (Joseph Ghio)

7 MOCHA MELODY (Alphild Lind)

## THE MARY SWORDS DEBAILLON MEDAL – LA

(Total votes cast = 137)

41 NIGHT THUNDER (Richard Morgan)

### Runners Up:

36 RASPBERRY RILLA (Rilla Hickerson)

34 ANN FAITH (M. D. Faith)

26 ENVIABLE (M. D. Faith)

## THE MORGAN-WOOD MEDAL – SIB

(Total votes cast = 287)

73 HERE BE DRAGONS

(Marty Schafer/Jan Sacks)

### Runners Up:

50 LAVENDER FAIR (Robert Hollingworth)

44 CHINA SPRING (Bob Bauer/John Coble)

44 BANISH MISFORTUNE  
(Marty Schafer/Jan Sacks)

39 BUTTER AND CREAM (Currier McEwen)

37 SALAMANDER CROSSING  
(Marty Schafer/Jan Sacks)

## THE ERIC NIES MEDAL – SPUI

(Total votes cast = 152)

40 MISSOURI DREAMLAND  
(O. D. Niswonger)

### Runners Up:

30 SPEEDING STAR (Anna & David Cadd)

29 HICKORY LEAVES (O. D. Niswonger)

22 KISS OF CARAMEL (Anna & David Cadd)

17 BUTTER RIPPLES (B. Charles Jenkins)

14 LACED SUNSHINE (D. L. Shepard)

## WALTHER CUP

(Most HM votes in any category)

92 EYE OF THE TIGER (Paul Black) SDB

### Runners Up:

76 TREE OF SONGS

(Marty Schafer/Jan Sacks) SIB

69 LADY OF THE NIGHT (Paul Black) BB

67 MONTMARTRE (Keith Keppel) TB

59 HUMORS OF WHISKEY

(Marty Schafer/Jan Sacks) SIB

53 RAYOS ADENTRO (Carol Morgan) MTB

## AWARD OF MERIT

### T ALL BEARDED – AM

(Total votes cast = 5169)

142 GYPSY LORD (Keith Keppel)

75 WILD ANGEL (Thomas Johnson)

71 JAZZ BAND (Keith Keppel)

69 KATHY CHILTON (Frederick Kerr)

68 PARISIAN DAWN (Keith Keppel)

67 ABSOLUTE TREASURE (Richard Tasco)

55 HIGH CHAPARRAL (Schreiner's Gardens)

51 DANCE RECITAL (Keith Keppel)

51 GLAMOUR PANTS (Barry Blyth)

46 BELLE DE PROVENCE (Lowell Baumunk)

45 ARISTOCRACY (Keith Keppel)

44 RHINELANDER (Schreiner's Gardens)

43 SATURN (Tom Johnson)

42 FORTUNATE SON (Schreiner's Gardens)

41 ITALIAN VELVET (Keith Keppel)

41 SHARPER IMAGE (Paul Black)

39 SECONDHAND ROSE (Ginny Spoon)

37 GUARDIAN ANGEL (Keith Keppel)

36 BAMBOO SHADOWS (Keith Keppel)

36 BLACKALICIOUS (Schreiner's Gardens)

36 DESIGNER'S ART (Frederick Kerr)

36 GUATEMALA (Tom Johnson)

36 PEGGY SUE (Larry Lauer)

36 SECRET RITES (Keith Keppel)

36 PADDED SHOULDERS (Paul Black)

### Runners Up:

- 34 BENEATH MY WINGS (LeRoy Meininger)
- 34 CRIMSON LIGHTS (Barbara Nicodemus)
- 34 SUN POWER (Tom Johnson)
- 33 LOOKY LOO (Richard Ernst)
- 33 WAIMEA CANYON SUNRISE  
(Larry Johnson)
- 32 BON APPETIT (J. T. Aitken)
- 32 DANGEROUS MOOD (Schreiner)
- 32 SANTA WAS HERE (O. D. Niswonger)
- 31 BOLD EXPRESSION (Richard Ernst)
- 30 HIGH CLASS (Paul Black)
- 30 WARRANTY (Tom Johnson)
- 30 YOSEMITE NIGHTS (George Sutton)
- 29 BOWLED OVER (Joseph Ghio)
- 29 CITY OF GOLD (Paul Black)
- 28 DUSKY HE-MAN (Gerald Richardson)
- 28 LADY LAREE (Ann Barrows)
- 28 MIAMI BEACH (Keith Keppel)
- 28 MOONLIT WATER (Keith Keppel)
- 28 PHOTOGENIC (Joseph Ghio)
- 28 PURPLE PEOPLE EATER  
(Anna & David Cadd)
- 28 ROCKET RANDY (Tom Burseen)

### BORDER BEARDED – AM BEARDED – AM

(Total votes cast = 452)

- 142 CROW'S FEET (Paul Black)
- 49 ZINGERADO (Lowell Baumunk)

### Runners Up:

- 40 TWIGGY (Donald Spoon)
- 34 LACED HANDKERCHIEF  
(Anna & David Cadd)
- 25 CUT ABOVE (J. T. Aitken)
- 25 DARKTOP STRUTTER (J. T. Aitken)
- 24 STRAWBERRY BLUSH  
(Vincent Christopherson)
- 22 HASTA LA VISTA (J. T. Aitken)
- 21 CHAMPAGNE BLUSH  
(Vincent Christopherson)
- 19 MINNEOLA (George Sutton)

### INTERMEDIATE BEARDED – AM

(Total votes cast = 506)

- 67 NICKEL (Paul Black)
- 46 DRAGONMASTER (Marky Smith)
- 46 MANY MAHALOS (J. T. Aitken)

### Runners Up:

- 40 FAST FORWARD (J. T. Aitken)
- 36 FLYING CIRCUS (Keith Keppel)
- 35 ELYSIUM (Marky Smith)
- 28 DOE Z DOE (Brad Kasperek)
- 27 CAT'S HAT (Donald Spoon)
- 26 BANSHEE (Marky Smith)
- 26 FIRE DOWN BELOW (Larry Lauer)

### MINIATURE TALL BEARDED – AM

(Total votes cast = 465)

- 78 REDROCK PRINCESS (Jean Witt)
- 64 PETIT LOUVOIS (Clarence Mahan)

### Runners Up:

- 63 PERSONA (Keith Keppel)
- 58 THINK SPRING (Stephanie Markham)
- 57 CHEESE AND WINE  
(Mary Louise Dunderman (deceased)  
by W. Terry Varner)
- 53 BACH TOCCATA (Lowell Baumunk)
- 50 RAZZLEBERRY DRESSING  
(Stephanie Markham)
- 42 PRETTY JAZZY (Riley Probst)

### STANDARD DWARF BEARDED – AM

(Total votes cast = 1256)

- 175 BLUEBEARD'S GHOST (Paul Black)
- 73 WISH UPON A STAR (Paul Black)
- 52 CANADIAN KISSES (Paul Black)
- 44 ABSOLUTE JOY (J. T. Aitken)
- 39 BIG BLUE EYES (Paul Black)
- 38 SCREAM (Thomas Johnson)

### Runners Up:

- 35 PUSSYCAT PINK (Paul Black)
- 32 BANDED TIGER  
(Barbara & David Schmieder)
- 32 LEOPARD PRINT (Thomas Johnson)
- 30 ROSALIE LOVING (Donald Spoon)
- 26 AHWAHNEE PRINCESS (George Sutton)
- 26 MIKEY LIKES IT (J. T. Aitken)
- 25 PLUM TWIST (Tom Johnson)
- 22 HONEY CAT (Jean Morris)
- 22 MURPHY'S LAW (Bennett Jones)
- 22 SPIDERMAN (Donald Spoon)

### MINIATURE DWARF BEARDED – AM

(Total votes cast = 209)

- 59 DOLLOP OF CREAM (Paul Black)
- 40 RUBY ELF (A. & D. Willott)

### Runners Up:

- 34 MIGHTY MOUSE (George Sutton)
- 27 TRIMMED VELVET (Donald Spoon)
- 26 FLASHING NEON (A. & D. Willott)
- 23 ACUTE COOT (Brad Kasperek)

### ARIL & ARILBRED – AM

(Pure aril and arilbred irises of ½ or more  
aril content)

(Total votes cast = 121)

- 33 NOBLE WARRIOR (Richard Tasco)
- 31 KALIFA'S JOY (Robert Annand)

**Runners Up:**

- 18 GIDEON'S LAMP (Pete McGrath)
- 18 HANNAH'S PRAYER (Pete McGrath)
- 11 FIESTA SKIRT (Howard & Irene Shockey)
- 10 TCHA'DEETCH (Rob Stetson)

**ARILBRED – AM**

(Arilbred irises of ¼ but less than ½ aril content)  
(Total votes cast = 136)

- 70 SUSPECT (Thomas Johnson)
- 29 NEFRET (Marky Smith)

**Runners Up:**

- 21 BURNISHED STAR  
(Vernon & Dana Brown)
- 16 BELOVED INFIDEL (A. & D. Willott)

**SPECIES – AM**

(Total votes cast = 135)

- 51 WOOLONG (James Waddick)
- 45 EPIC POEM (Marty Schafer/Jan Sacks)

**Runners Up:**

- 21 TOURIST (Marty Schafer/Jan Sacks)
- 18 LESSER GOLDFINCH (Lowell Baumunk)

**INTERSPECIES – AM**

(Total votes cast = 172)

- 51 ROY'S REPEATER (J. T. Aitken)
- 47 KINSHIKOU  
(Hiroshi Shimizu by Carol Warner)

**Runners Up:**

- 29 PLUM DUCK (Brad Kasperek)
- 26 FLOATING CANDLES  
(Marty Schafer/Jan Sacks)
- 19 UNION MADE (Bob Bauer/John Coble)

**CALIFORNICAE – AM**

(Total votes cast = 62)

- 14 LINES THAT RHYME (Joseph Ghio)
- 9 HIDDEN ASSET (Duane Meek)
- 9 OCEAN BLUE (Joseph Ghio)

**Runners Up:**

- 8 STEAMER LANE (Lois Belardi)
- 4 STAINLESS STEEL (Joseph Ghio)

**LOUISIANA – A–AM**

(Total votes cast = 231)

- 28 GINNY'S CHOICE (Wayland Rudkin)
- 25 FRENCHMEN STREET (Patrick O'Connor)

**Runners Up:**

- 22 RENEE FLEMING (Heather Pryor)
- 18 MAISON DE VILLE  
(Mary Dunn (deceased) by Joseph Ghio)
- 16 DIVORCEE (Joseph Ghio)
- 15 JUNE'S PICK (M. D. Faith)
- 14 FOXY ONE (M. D. Faith)
- 14 LAKE HAMANA (Bernard Pryor)
- 14 PARK AVENUE PRINCESS (Heather Pryor)
- 13 ECHO'S RED IMP (M. D. Faith)
- 13 ZYDECO (Patrick O'Connor)

**SIBERIAN – AM**

(Total votes cast = 434)

- 70 SO VAN GOGH (Marty Schafer/Jan Sacks)
- 41 KABOOM (Bob Bauer/John Coble)

**Runners Up:**

- 33 FRILLY VANILLY (Robert Hollingworth)
- 29 KISS THE GIRL (Marty Schafer/Jan Sacks)
- 28 CHARMING BILLY  
(Marty Schafer/Jan Sacks)
- 27 CREME CARAMEL  
(Marty Schafer/Jan Sacks)
- 26 OUT IN MISSOURI (O. D. Niswonger)
- 23 MY FIRST KISS (Dean Cole)
- 23 TWELFTH KNIGHT (Carol Warner)
- 22 ON HER TOES (Marty Schafer/Jan Sacks)
- 19 GOSSAMER BREEZE (Chandler Fulton)

**SPURIA – AM**

(Total votes cast = 176)

- 42 SOLAR FUSION (Lee Walker)
- 33 SUNRISE SURPRISE (O. D. Niswonger)

**Runners Up:**

- 24 SAINT PATRICK'S GOLD  
(Anna & David Cadd)
- 22 SPARKLING CIDER (Anna & David Cadd)
- 19 GOLDEN DUCAT (Anna & David Cadd)
- 19 STAR RIDER (Anna & David Cadd)
- 17 ELEVEN POINT RIVER (O. D. Niswonger)

**HONORABLE MENTION****TALL BEARDED – HM**

(Total votes cast = 7477)

- 67 MONTMARTRE (Keith Keppel)
- 65 BLACK MAGIC WOMAN (Richard Tasco)
- 61 SILK ROAD (Keith Keppel)
- 58 BALTIC SEA (Thomas Johnson)
- 51 FOR LOVERS ONLY (Paul Black)
- 48 FRENCH LILACS (Keith Keppel)
- 48 WEDDING BELLE (Keith Keppel)
- 47 GITANO (Keith Keppel)
- 46 VENITA FAYE (Keith Keppel)
- 43 CLOUDSCAPE (Paul Black)



43 HIGH OCTANE (Keith Keppel)  
 43 LA SCALA (Keith Keppel)  
 42 STRUT YOUR STUFF (Paul Black)  
 41 BRILLIANT DISGUISE (Thomas Johnson)  
 41 CAT CALL (Paul Black)  
 41 PEP RALLY (Joseph Ghio)  
 41 SCATTERBRAIN (Thomas Johnson)  
 40 ORCHID DOVE (Donald Spoon)  
 39 CORAL SPLENDOR (Paul Black)  
 39 LEGERDEMAIN (Keith Keppel)  
 38 MAGICAL (Joseph Ghio)  
 38 MONSOON MOON (Keith Keppel)  
 36 RED HANDED (Joseph Ghio)  
 35 DAKOTA SMOKE (Schreiner)  
 34 PSYCHIC READER (Joseph Ghio)  
 33 PHANTOM SHIP (Lowell Baumunk)  
 33 SPADES (Lesley Painter)  
 33 THUNDERING OVATION (Paul Black)  
 32 GUILT FREE SAMPLE (Paul Black)  
 32 NOUVEAU RICHE (Keith Keppel)  
 31 SASSY TART (Richard Ernst)  
 30 LOOPTY LOO (Paul Black)  
 30 OSSEO (Jack Worel)  
 30 RAVEN GIRL (Schreiner)  
 30 SNOW LION (Marky Smith)  
 30 WHITE HOT (Richard Tasco)  
 29 BLUSHING BASHFUL (Paul Black)  
 29 PURE INNOCENCE (Michael Sutton)  
 28 ARCTIC BURST (Roger Duncan)  
 28 ATTRACTIVE LADY (Thomas Johnson)  
 28 KICKAPOO KANGAROO (Brad Kasperek)  
 28 MAJESTIC RULER (Schreiner)  
 28 MY OH MY (Schreiner)  
 28 VALENTINO (John Painter)  
 27 CAMEO APPEARANCE (Paul Black)  
 27 NEW FACE (Paul Black)  
 27 ORANGE KING (Schreiner)  
 27 POP IDOL (Joseph Ghio)  
 27 SNAPSHOT (Thomas Johnson)  
 27 THAT'S HOT (Larry Lauer)  
 26 LORETTO HEIGHTS (Robert Van Liere)  
 26 LUSCIOUS LACE (Paul Black)  
 26 RAY DALE KERR (Frederick Kerr)  
 26 SILENT SCREEN STAR (Joseph Ghio)  
 25 AMAZING DON (Don Nebeker)  
 25 BORN TO PLEASE (Ruth Rogers)  
 25 COYOTE UGLY (Kathie Kasperek)  
 25 INDIGO SEAS (Schreiner)  
 25 SIMPLY SENSATIONAL (Thomas Johnson)  
 24 BEACH DANCE (Barry Blyth)  
 24 COPPER FUSION (J. T. Aitken)  
 24 HERE COMES THE SUN (Schreiner)  
 24 I LOVE A PARADE (Paul Black)  
 24 SIGNAL RED (Donald Spoon)  
 24 STAR CHALLENGER (Donald Spoon)  
 23 CRETE (Thomas Johnson)  
 23 DRIVE MY CAR (Larry Lauer)  
 23 EMILO (Gerald Richardson)

23 IVORY GHOST (Gerald Richardson)  
 23 LEMON CLOUD (Lesley Painter)  
 23 RAGING RIVER (Larry Lauer)  
 23 ZONED IN (Michael Sutton)  
 22 COME AWAY WITH ME (Schreiner)  
 22 FLASH OF LIGHT (Thomas Johnson)  
 22 GRAPE PARFAIT (Marcy Lauer)  
 22 LULLABY OF BROADWAY  
 (James Begley by Barbara BeVier)  
 22 SOCIAL BLUSH (Michael Sutton)  
 21 BATTLESTAR ATLANTIS (J. T. Aitken)  
 21 DIALECT (Thomas Johnson)  
 21 FLUFFY PILLOWS (Schreiner)  
 21 MAGIC MASQUERADE (Paul Black)  
 21 OH SO YUMMY (Paul Black)  
 21 THROUGH THE CLOUDS  
 (Joseph Ghio)

#### Runners Up:

20 AU CONTRAIRE (Thomas Johnson)  
 20 BLANKET OF SNOW (Thomas Johnson)  
 20 CASINO CRUISER (Tom Burseen)  
 20 CAUSE FOR PAUSE (Tom Burseen)  
 20 FLY YOUR COLORS (Paul Black)  
 20 TRIAL BY FIRE (Joseph Ghio)  
 20 UNDER THE TUSCAN SUN  
 (Frederick Kerr)  
 19 COME GO WITH ME (Larry Lauer)  
 19 COWBOY GIRL (Marvin Davis)  
 19 FALCON PRIDE (Schreiner)  
 19 FEUDALISM (Joseph Ghio)  
 19 GENTLEWOMAN (Marky Smith)  
 19 GOTHIC ROMANCE (Paul Black)  
 19 NOBLE SPIRIT (J. T. Aitken)  
 19 PSYCHIC (Thomas Johnson)  
 19 SANTORINI (Schreiner)  
 19 SPOT ON (Michael Sutton)  
 19 WHOLE LOTTA LOVE (Larry Lauer)  
 18 ALEUTIAN ISLANDS (Michael Sutton)  
 18 AMERICAN PRIDE  
 (James Begley by Barbara BeVier)  
 18 BELLAGIO (Bryce Williamson)  
 18 BY POPULAR DEMAND (Paul Black)  
 18 CHEAP (Paul Black)  
 18 CHEYENNE SKY (Schreiner)  
 18 CLAIM JUMPER (Michael Sutton)  
 18 DONAGHCLONEY (Gerald Richardson)  
 18 GENEALOGY (Thomas Johnson)  
 18 GOING GREEN  
 (Anton Mego by J. T. Aitken)  
 18 GRIZZLY GOSLING (Brad Kasperek)  
 18 NO EGRETS (Brad Kasperek)  
 18 NOBLE STATUE (George Hilton)  
 18 PIANOFORTE (Joseph Ghio)  
 18 RAZZLEBERRY PIE (Michael Sutton)  
 18 WADE RILEY (Merle Roberts)  
 17 BEV (Gerald Richardson)  
 17 CALYPSO MUSIC (Jim Hedgecock)



17 COLOR ME DIFFERENT  
(Stephanie Markham)  
17 COZY STITCH (David Miller)  
17 DREAMING OF RIO (Schreiner)  
17 EPIPHANY (Jim Hedgecock)  
17 EQUALIZER (Richard Ernst)  
17 GLOBAL WARMER (Tom Burseen)  
17 ICE CAPEDES (Thomas Johnson)  
17 LITTLE BIT OF HEAVEN (Connie Sutton)  
17 NATIONAL TREASURE (Donald Spoon)  
17 ORIGINAL CAST (Thomas Johnson)  
17 PLACE YOUR BETS (Schreiner)  
17 PURR FORM MINTS (Tom Burseen)  
17 ROMANTIC LYRIC (Joseph Ghio)  
17 SPOT STARTER (Schreiner)  
17 SUNSHINE ON MY SHOULDERS  
(Michael Sutton)  
17 TRACKING RABBITS (O. D. Niswonger)

### **BORDER BEARDED – HM**

(Total votes cast = 476)

69 LADY OF THE NIGHT (Paul Black)  
31 HOODOO BLUES (Stephanie Markham)  
26 IMBROGLIO (Keith Keppel)  
26 MEERKAT MANOR  
(Brad Kasperek)

#### **Runners Up:**

24 BONJOUR (Lowell Baumunk)  
21 GENES R US (J. T. Aitken)  
20 MAGIC QUEST (Richard Tasco)  
19 SILGREY'S BEAUTY (W. Terry Varner)  
18 EXUBERANCE (D. C. Nearpass (deceased)  
by Donald Spoon)  
16 BROKEN LINK (Michael Sutton)  
15 OASIS ROOT BEER (Keith Chadwick)  
14 ORANGE RUSH (Jim & Vicki Craig)  
13 BELOW RADAR (Michael Sutton)

### **INTERMEDIATE BEARDED – HM**

(Total votes cast = 840)

48 DAZZLING (Paul Black)  
40 MAN'S BEST FRIEND (Paul Black)  
33 LINE DRIVE (Michael Sutton)  
30 SPARKLING (Richard Tasco)  
28 ARCTIC WIND (Paul Black)  
27 DARK FORCES (Richard Tasco)  
27 FRISKY FROLIC (Paul Black)  
27 HOT GLOW (Richard Tasco)

#### **Runners Up:**

26 RED HOT CHILI (Michael Sutton)  
24 ALLITERATION (Paul Black)  
24 TESSIE THE TEASE (J. Griffin Crump)  
23 AERONAUT (Marky Smith)  
20 ALBERTA CLIPPER (Paul Black)

20 SWEET POTATO PIE (Paul Black)  
19 BORDELLO QUEEN (Paul Black)  
19 SPOOKY (Keith Keppel)  
18 ROYAL QUACKERS (Brad Kasperek)  
17 CORAL CHIMES (J. Griffin Crump)  
17 FORGED IN FIRE (Paul Black)

### **MINIATURE TALL BEARDED – HM**

(Total votes cast = 751)

53 RAYOS ADENTRO (Carol Morgan)  
42 STITCHED IN BLUE (Kenneth Fisher)  
37 BIT O' ROYALTY (Stephanie Markham)  
34 JACK'S PICK (Charles Bunnell)  
33 SUN SPIRIT (Jim & Vicki Craig)

#### **Runners Up:**

31 ORANGE STARLET (Kenneth Fisher)  
30 DALLAS MAHAN (Clarence Mahan)  
30 SARI'S DANCE (Ginny Spoon)  
28 CORAL CAPER (J. T. Aitken)  
24 RED TROOPER (Kenneth Fisher)  
24 SURVIVOR (Lynda Miller)  
23 OZARK PRINCESS (Kenneth Fisher)  
22 GARDEN IMP (Kenneth Fisher)  
22 JIGGITY-JIG (Stephanie Markham)

### **STANDARD DWARF BEARDED – HM**

(Total votes cast = 1744)

92 EYE OF THE TIGER (Paul Black)  
46 MEOW (Paul Black)  
41 EXTRATERRESTRIAL (Marky Smith)  
39 MAUI SUNRISE (J. T. Aitken)  
30 ANUBIS (Marky Smith)  
29 DEVIL'S NIGHT (Keith Keppel)  
28 LEMON FREEZE (Keith Keppel)  
26 BOMBAY SAPPHIRE (Paul Black)  
26 JUNE BUG (Donald Spoon)  
24 PIGS IN SPACE (Paul Black)  
22 GAL PAL (Paul Black)  
22 JACK LOVING (Donald Spoon)  
22 PINK LATTE (J. T. Aitken)  
21 ARVO (Keith Keppel)  
21 CLEVER (Thomas Johnson)  
21 DEW BUZZ BYE  
(Jayme Adams by Carol Coleman)  
21 VIVALDI (Lowell Baumunk)

#### **Runners Up:**

20 GIGGLES AND GRINS (Carol Coleman)  
20 LITTLE SWEDEN (Thomas Johnson)  
20 PEANUT BUTTER SWIRL (Paul Black)  
19 AMBER EYES (Jean Morris)  
19 LUCY'S CHOICE  
(Barbara & David Schmieder)  
19 NINJA TURTLES (J. T. Aitken)  
19 PINKSTER (Michael Sutton)

18 LAVENDER LYNX (Paul Black)  
 17 CRYSTAL SHIP (Larry Lauer)  
 17 INVIOLEATE (Barbara & David Schmieder)  
 17 KAREN JONES (Donald Spoon)  
 17 SPIDERLADY (Donald Spoon)  
 16 AUNTIE EM (Nancy Price)  
 16 ORANGE ZEST (A. & D. Willott)  
 16 TREMORS (Thomas Johnson)  
 15 INTERGALACTIC (Paul Black)  
 15 OVERCAST (Keith Keppel)  
 14 BLUE HAT BOY (Chuck Chapman)  
 14 EARTH AND SKY (Donald Spoon)  
 14 EASY DOES IT (J. T. Aitken)  
 14 HONEYLOVE (Jim & Vicki Craig)  
 14 HONKY TONK MOON (A. & D. Willott)  
 14 PARADIGM SHIFT (Chuck Chapman)

### MINIATURE DWARF BEARDED – HM

(Total votes cast = 230)

50 ICON (Keith Keppel)  
 22 AQUADOODLE (J. T. Aitken)

#### Runners Up:

21 BE BRIEF (Paul Black)  
 15 DOTTIE'S DOLL (A. & D. Willott)  
 14 PIN TAIL (Brad Kasperek)  
 11 BADGE (Paul Black)  
 11 DEX (J. T. Aitken)  
 11 STRIPE THREE (Paul Black)  
 10 WEE HARRY (Barbara & David Schmieder)  
 8 AMPERSAND (Donald Spoon)  
 8 DELFT ELF (William & Ada Godfrey)

### ARIL & ARILBRED – HM

(Pure aril and arilbred irises  
 of ½ or more aril content)  
 (Total votes cast = 121)

23 SILENT SENTRY (Richard Tasco)  
 13 JELLY ROLL JAM (Caroline Chacon)  
 9 GO BIG RED (Sharon McAllister)

#### Runners Up:

8 HOLY MOLEY PLUM (Caroline Chacon)  
 8 HONEY NOT TONIGHT (Sharon McAllister)  
 8 LAKESIDE ELF (Anita Moran)  
 7 ENIGMATIC ELF (Elm Jensen)  
 6 MALEKA (Robert Annand)  
 6 SWORD OF GOLD (Sharon McAllister)  
 5 VIOLETS IN MIST (Caroline Ryan-Chacon)  
 4 ANAHEIM DAUGHTER (Anita Moran)  
 4 GALILEE DAWN (Caroline Chacon)

### ARILBRED – HM

(Arilbred irises of 1/4  
 but less than ½ aril content)

(Total votes cast = 103)

36 OCTAVE (Thomas Johnson)  
 25 CHAIN REACTION (Richard Tasco)

#### Runners Up:

10 MOHRIC MYSTERY (Sharon McAllister)  
 9 BUTTERED BERRIES  
 (Vernon & Dana Brown)  
 8 ALMOST APRICOT (Caroline Ryan-Chacon)  
 6 VORTEX (Sharon McAllister)

### SPECIES – HM

(Total votes cast = 132)

25 GUBIJIN (Hiroshi Shimizu)  
 17 DICK REDFIELD (Dick Redfield  
 by Marty Schafer/Jan Sacks)

#### Runners Up:

16 SUN MOON LAKE (B. LeRoy Davidson  
 (deceased) by Carla Lankow)  
 13 TOUGH COOKIE (Marty Schafer/Jan Sacks)  
 10 MOUNTAIN GIRL (Darrell Probst)  
 9 SAM'S MINI (Marty Schafer/Jan Sacks)  
 9 WILDWOOD WILLIE  
 (Michael Iler by Will Plotner)  
 8 WISHMASTER (Richard Tasco)

### INTER-SPECIES CROSS – HM

#### SPECIES CROSS – HM

(Total votes cast = 163)

23 TSUKIYONO  
 (Hiroshi Shimizu by Carol Warner)  
 18 CURRIER McEWEN (Tony Huber)

#### Runners Up:

17 ROY'S SURPRISE (Dana Borglum)  
 15 CLOWN PANTS (Thomas Silvers)  
 14 LAVENDER BLEACH (Tony Huber)  
 11 CHILD OF ROY (Dana Borglum)  
 10 VULTEE (John J. Taylor)  
 9 BYAKUYA NO KUMI  
 (Hiroshi Shimizu by Carol Warner)  
 8 UGLY DUCKLING (Christy Ann Hensler)

### CALIFORNAE – HM

(Total votes cast = 86)

8 PERIWINKLE PERSIAN (Deborah Cole)  
 6 MULTIPLICITY (Joseph Ghio)  
 5 PINOLE PRINCE  
 (Vernon Wood by Terri Hudson)  
 4 FOGGY DAYS (Joseph Ghio)  
 4 MISSION SOLEDAD (Joseph Ghio)

### Runners Up:

- 3 AROUND THE BAY (Joseph Ghio)
- 3 COIN OF THE REALM (Joseph Ghio)
- 3 EGOCENTRIC (Deborah Cole)
- 3 FIREWORK DISPLAY (Joseph Ghio)
- 3 LEWIS LAWYER  
(Adele Lawyer by Terri Hudson)
- 3 ON THE BUBBLE (Joseph Ghio)
- 3 WIDE SCREEN (Joseph Ghio)

### LOUISIANA – HM

(Total votes cast = 413)

- 18 EDNA CLAUNCH (Harry Wolford)
- 15 ROCHESTER LILACS (Heather Pryor)
- 14 CHOCTAW RIDGE (Joseph Musacchia)
- 14 RILLA HICKERSON  
(Farron Campbell by M. & J. Wilhoit)
- 14 SUSAN B. ANTHONY (Bernard Pryor)
- 12 BLUE MOUNTAIN MIST (Bernard Pryor)
- 11 CIRCE MISS (M. D. Faith)
- 11 DARK AND DANGEROUS (Bernard Pryor)
- 11 LITTLE BRONZED AUSSIE  
(Bernard Pryor)

### Runners Up:

- 10 COBWEB CONCERTO (Heather Pryor)
- 10 TRULY SCRUMPTIOUS (Heather Pryor)
- 9 EXPLODING STAR (Heather Pryor)
- 9 MICHIGAN BELLE (Jill Copeland)
- 8 BIG CHARITY (Patrick O'Connor)
- 8 CIRCE'S APPEAL (M. D. Faith)
- 8 NEON SHADOW (Rodney Barton)
- 8 NEW ORLEANS LADY (Joseph Musacchia)
- 8 SEMINOLE SUNRISE (Harry Wolford)
- 7 ALINE ARCENEUX (Bernard McSparrin)
- 7 LULU E (M. D. Faith)
- 7 MELON COCKTAIL (T. J. Betts)
- 7 NOTTOWAY (Patrick O'Connor)
- 7 OUR SASSY (Wayland Rudkin)
- 7 PERCOLATOR (T. J. Betts)

### SIBERIAN – HM

(Total votes cast = 903)

- 76 TREE OF SONGS  
(Marty Schafer/Jan Sacks)
- 59 HUMORS OF WHISKEY  
(Marty Schafer/Jan Sacks)
- 49 HOOKED AGAIN (James Copeland Sr.)
- 40 KILAUEA (Marky Smith)
- 34 SIMON SAYS (Robert Hollingworth)
- 31 JOYCE COLE (Dean Cole)
- 30 PAINTED WOMAN  
(Marty Schafer/Jan Sacks)
- 25 DIRIGO BLACK KNIGHT (John White)
- 25 STAR LION (Marky Smith)

### Runners Up:

- 23 TALL DARK AND HANDSOME  
(Marty Schafer/Jan Sacks)
- 21 HANDSOME HARRY (Louise Bellagamba)
- 21 MAGNETISM (Marty Schafer/Jan Sacks)
- 19 ALI'I (Marky Smith)
- 18 REEL CUTE (Marty Schafer/Jan Sacks)
- 18 SENECA MIDNIGHT BLUES  
(Dana Borglum)
- 16 PRETTY POLLY (Marty Schafer/Jan Sacks)
- 16 SWEETS OF MAY  
(Marty Schafer/Jan Sacks)
- 15 HAVING FUN (Bob Bauer/John Coble)
- 15 JUKEBOX (Bob Bauer/John Coble)
- 15 JUNE TO REMEMBER  
(Marty Schafer/Jan Sacks)
- 15 MAJESTIC OVERTURES (J. T. Aitken)
- 14 LAUGH OUT LOUD (Robert Hollingworth)
- 14 MOON DAZZLE (Bob Bauer/John Coble)

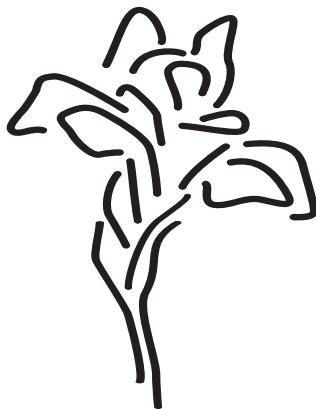
### SPURIA – HM

(Total votes cast = 283)

- 23 MISSOURI BOON  
(O. D. Niswonger by M. & J. Wilhoit)
- 22 CASTOR RIVER (O. D. Niswonger)
- 17 LEMON CHIFFON PIE  
(Anna & David Cadd)
- 17 REMEMBERING VIC (Lee Walker)

### Runners Up:

- 15 ABALONE PEARL (Anna & David Cadd)
- 15 HONEY MOCHA LOTTA (Lee Walker)
- 15 STEELY EYES (Lee Walker)
- 14 DANDELION SMILE (Anna & David Cadd)
- 12 LINE DANCING (B. Charles Jenkins  
by Comanche Acres)
- 11 BOLDLY ELEGANT (Anna & David Cadd)
- 11 COWBOY COUNTRY  
(B. Charles Jenkins by Comanche Acres)
- 10 NEON CAMEL (Lee Walker)
- 9 MY TOPAZ (B. Charles Jenkins)



# The Canadian Iris Society

## Annual Iris Show

### AWARDS

Here is the list of awards given at the Annual Iris Show which took place in Guelph, Sunday, June 13th, 2010. We had six (6) exhibitors and twenty eight (28) cultivars represented at the show. The smaller number this year was due to the late show date and the advanced season for bloom. Other awards were not given as there were no entries in those classes.

### Classification

#### Division One Iris Species

##### Section A: An iris cultivar introduced by a Canadian hybridizer.

###### Class 1 Tall Bearded

<u>Cultivar</u>	<u>Placing</u>	<u>Exhibitor</u>
Buckskin Bab	2	Chuck Chapman
Eramosa Ridge	3	Chuck Chapman
Plum Ringer	3	Chuck Chapman

##### Section B: Historic Iris (introduced prior to 1979)

###### Class 4 Tall Bearded

PT Barnum	-	Nancy Kennedy
-----------	---	---------------

##### Section C: Bearded Iris

###### Class 7 Tall Bearded

Blue Suede Shoes	1	Chuck Chapman
Coastal Mist	1	Chuck Chapman
Crowned Heads		Nancy Kennedy
English Style	2	Chuck Chapman
Fancy A FluHel	2	Chuck Chapman
Feature Attraction	2	Nancy Kenedy
Half Dollar	2	Chuck Chapman
Long's Peak	2	Chuck Chapman
Merlot	1	Ann Granateir
Morning Surprise		Ed Jowett
Sea Power	3	Ann Granateir
Uncle Charlie		Chuck Chapman

## Section D: Siberian

Class 12 Siberian iris

Adrealine Rush	2	Ed Jowett
----------------	---	-----------

## Section E: Other iris not specified above.

Class 13 Iris species, named

I. Variagata regia	1	Heather Brown
--------------------	---	---------------

I.versicolor	2	Emily Ives
--------------	---	------------

## Section F: Seedlings

Class 18 Tall Bearded

06-697E-5	2	Chuck Chapman
-----------	---	---------------

06-744-2	1	Chuck Chapman
----------	---	---------------

06-819C-1	3	Chuck Chapman
-----------	---	---------------

07-512-5	2	Chuck Chapman
----------	---	---------------

92-682-2	2	Chuck Chapman
----------	---	---------------

03-B108-1	2	Chuck Chapman
-----------	---	---------------

03-B91-2	1	Chuck Chapman
----------	---	---------------

03-Q397-1	2	Chuck Chapman
-----------	---	---------------

05-040-2	2	Chuck Chapman
----------	---	---------------

06-59-1 EC	1	Chuck Chapman
------------	---	---------------

---

## AIS Awards

**AIS Silver Medal and certificate** - Most red ribbons Division 1 Sections A-E

Chuck Chapman

**AIS Bronze Medal and certificate** - 2nd most red ribbons Division 1 Sections A-E

Heather Brown

---

## Other Awards

**Queen of Show Kummer Cup**

I.Variagata Regia	Heather Brown
-------------------	---------------

**Court of Honor**

Blue Suede Shoes	Chuck Chapman
------------------	---------------

Coastal Mist	Chuck Chapman
--------------	---------------

I Variagata Regia	Heather Brown
-------------------	---------------

Merlot	Ann Granateir
--------	---------------

03-B91-2 seedling	Chuck Chapman
-------------------	---------------

06-59-1 seedling	Chuck Chapman
------------------	---------------

06-744-2 seedling	Chuck Chapman
-------------------	---------------



# Iris Perfect for Water Gardens

By Vaughn Dragland

A s a brand new member of the Canadian Iris Society, I will admit—I don't know much about iris. So when my wife **Cornelia Dragland** and I were planning to introduce some water iris to our small backyard pond, we consulted with our good friend **Ed Jowett** (who DOES know a thing or two about iris—after all, he is president of the CIS). Ed told us that there are actually lots of varieties of iris that do quite well as marginal bog plants or even fully submerged.



Then, last fall Ed surprised us by bringing over six clumps of iris bulbs (two specimens each of 3 different varieties). They didn't look like much at the time... some bulbs with roots sticking out, and a couple of short green shoots—all wrapped up in wet newspaper. They were labeled with black marker on the sides of the leaves: 2 *iris Versacolour* “*Blue Flag*”, 2 *iris Pseudacorus* “*Sun Cascades*” (yellow), and 2 *iris Pseudacorus* “*Frost End*” (white). Ed said to plant the *Versacolour* in about 6” of water, and both of the *Pseudacorus* about 12” deep.



We have found with other water garden flora, that it's best to plant them in “soft pots”, which are readily available in most garden centers. I like the 7” X 7” X 7” “Planting Bags” made by Laguna. They are inexpensive, easy to use, and can be shaped to fit in small areas. They also allow water to flow

in and out of the bag, but the soil can't escape, and the roots can expand through the bag, making transplanting a snap. Since the soil will not leach out, the pond water stays nice and clear.



Our pond is purposely situated in full sun, and of course, there is “no watering required”, so the iris should have lots of the basic ingredients they need to thrive.

The other important consideration is the soil—not so much for the iris (which are “hard to kill”) but for the sake of water clarity (and the health of the fish). Ordinary triple mix, which is great for your regular planting beds, just won't do in the water.



What is required is a heavy soil mix that doesn't dissolve in the water to make mud. I recommend using Fafard Water Garden Soil Mix. This is a heavy clay soil mix specifically created for the culture of aquatic plants. Its components: black earth (humus), sand, granulated clay, and calcite stone, create a high level of stability, and help aquatic plants become anchored to the bottoms of artificial basins.



### The planting process:

- 1.) Adequately wet and knead the soil before planting.
- 2.) Place the bulbs in the pot and tamp the soil well around the roots for anchoring.
- 3.) Fix the root ball to the pot with a nylon line (to avoid having roots come loose).
- 4.) Cut off the larger leaves retaining only the smaller ones.
- 5.) Cover the top of the soil (but not the crown of the iris) with small stones.  
(This protects the delicate roots from marauding fish, and also helps keep the soil in place.)
- 6.) Immerse the pots in a bucket of water to wash away any loose soil before placing them in the pond.

Once the iris were in the pond, all we had to do was sit back and wait for the magic to happen... But it was not long before Winter set in and the pond was covered with a layer of ice. The Koi, Shubunkins, and Goldfish (and Queen Frederica the frog) were happily hibernating at the pond bottom, and our new iris were encased in a solid block of frozen pond water, with just a few green shoots peeking out above the ice. Later on, the snow came and buried everything completely for a couple of months. I wondered if they would survive the winter like that, but there was nothing we could do but have faith and wait for Spring.



The Dragland pond — February 28, 2010

photos by Cornelia Dragland



Spring arrives at Dragland Pond

When Spring does come, I'm always amazed... First the tulips and crocuses sprout, then a veritable explosion of life descends upon our garden. Cornelia is busy planting flower boxes full of annuals on the deck, as the birds are busy building their nests all around. Algae starts to form in the pond just in time for the hungry fish to break their fast, awakening from a five-month slumber. And then (lo and behold) come the iris, pushing their way above the water's surface, reaching for the sky! The *Pseudacorus* "Yellow" was the first to bloom, followed quickly by the *Pseudacorus* "Frost End", and finally the *Versicolor* "Blue Flag", a few weeks later. It's a pity that the iris blooms didn't last very long, but their lush green foliage was a welcome addition to our water garden for the duration of the season.

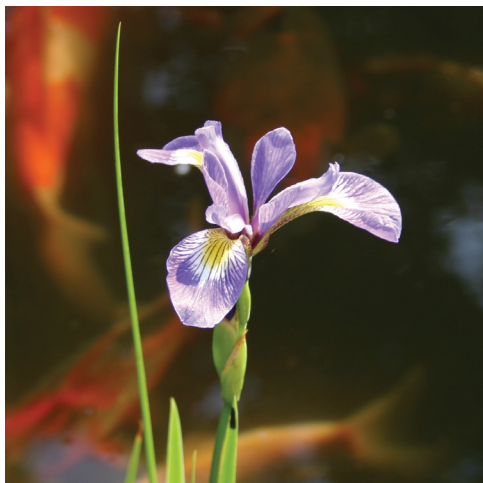
I did a bit of research on the Web, and compiled the following data on these three varieties, for the more serious iris aficionado readers among you:

### *Iris versicolor* "Blue Flag"

(source: <http://en.wikipedia.org>)

*Iris versicolor*, also commonly known as the *Harlequin Blueflag*, *Larger Blue Flag*, *Northern Blue Flag*, and other variations of those names, is a species of iris native to North America where it is common in sedge meadows, marshes, and along stream banks and shores.

It is a perennial herb, growing 10–80 centimetres high. This iris tends to form large clumps from thick, creeping rhizomes. The unwinged, erect stems generally have basal leaves that are more than 1 cm wide. Leaves are folded on the midribs so that they form an overlapping flat fan. The well developed blue flower has 6 petals and sepals spread out nearly flat and have two forms. The longer sepals are hairless and have a greenish-yellow blotch at their base. The inferior ovary is bluntly angled. Flowers are usually light to deep blue (purple and violet are not uncommon) and bloom during May to July. Fruit is a three-celled, bluntly angled capsule. The large seeds can be observed floating in fall.



*Iris versicolor* "Blue Flag"

The blue flag is the provincial flower of Quebec, having replaced the Madonna lily, which is not native to the province.

***Iris pseudacorus* “Yellow”**  
(source: <http://en.wikipedia.org>)

*Iris pseudacorus* is a species of iris, native to Europe, Western Asia, and Northwest Africa. Common names include *Yellow Iris* and *Yellow Flag*. Its specific epithet, meaning “false acorus,” refers to the similarity of its leaves to those of *Acorus calamus*, as they have a prominently veined mid-rib and sword-like shape.

It is a herbaceous perennial plant growing to 1–1.5 m (or a rare 2 m) tall, with erect leaves up to 90 cm long and 3 cm broad. The flowers are bright yellow, 7–10 cm across, with the typical iris form. The fruit is a dry capsule 4–7 cm long, containing numerous pale brown seeds.



*Iris pseudacorus* “Yellow”

photos by Cornelia Dragland

*Iris pseudacorus* grows best in very wet conditions, and is often common in wetlands, where it tolerates submersion, low pH, and anoxic soils. The plant spreads quickly, by both rhizome and water-dispersed seed. It fills a similar niche to that of *Typha* and often grows with it, though usually in less deep water. While it is primarily an aquatic plant, the rhizomes can survive prolonged dry conditions.

*Yellow Iris* has been used as a form of water treatment since it has the ability to take up heavy metals through its roots. Large iris stands in Western Scotland form a very important feeding and breeding habitat for the endangered Corn Crane bird.

The rhizome has historically been used as a herbal remedy, most often as an emetic. When applied to the skin or inhaled, the tannin-rich juices can be acrid and irritating. It has been planted nearly worldwide as an ornamental plant, with several cultivars selected for bog garden planting.

In some regions, it has escaped from cultivation to establish itself as an invasive aquatic plant which can create dense, monotypic stands that outcompete other plants in the ecosystem. Where it is invasive, it is tough to remove on a large scale. Even ploughing the rhizomes is often ineffective, and its eradication is highly unlikely. It has been banned in some areas but is still widely sold in others for use in gardens, and it will continue to be planted by gardeners, who are unaware of or unconcerned with its invasive potential.





## *Iris pseudacorus* “Frost End”

(source: [www.davesgarden.com](http://www.davesgarden.com))

*Iris pseudacorus* *Frost End* is a cultivar of iris, in the family *Iridaceae*, genus *Iris*, species *pseudacorus* which was hybridized by **Huber** (Year of registration / introduction: 2002). It is white with a purplish signal and slightly ruffled falls, and has white style arms with a lighter midrib.

It grows to a height of 24-36 in. (60-90 cm), likes full sun exposure, and its optimum spacing is 15-24 inches. It's bloom time is early mid-season, and its foliage is herbaceous. *Iris pseudacorus* *Frost End* requires consistently moist soil. (Do not let it dry out between watering.) Its very high moisture requirement makes it very suitable for bogs and water gardens. It propagates by dividing rhizomes, tubers, corms, or bulbs (including offsets), but does not set seed, since the flowers are sterile.



*Iris pseudacorus* “Frost End”  
with Solar the 15” Ogon Koi (4 years old)



The Dragland pond — May 30, 2010



## Conclusion

As I write this essay, it is late July. Our little backyard oasis is in its full glory, and we make time to enjoy the wonders of nature that it provides every day. Whether it's entertaining on the deck, or simply sitting and sipping wine at the water's edge, we gratefully absorb the lessons that our garden has to offer. Mother Nature is amazing, and fills our spirits with hope, tranquility, and awe. Every fish, plant, and rock is unique and special, and we are happy to have adopted the water irises into our family—opening the door to a whole new botanical adventure.

I hope this article is not too “flowery” (pun intended), but those of you who enjoy getting your hands dirty in the garden will know the kind of spiritual feeling achieved by making things grow. It's worth writing about—and sharing the experience and wonderment!



**Vaughn Dragland** is a new CIS member, living in the West End of Toronto, and is the designer of this newsletter. He can be reached at [vaughn@e-clipse.ca](mailto:vaughn@e-clipse.ca).

# TERRA GREENHOUSES

For all your gardening or landscaping needs  
Visit our corporate sponsor  
at one of their sites



Terra Greenhouses  
2273 #5 Highway  
Burlington, ON  
(between Brant St  
& Guelph Line)  
T: 905.332.3222

Terra Greenhouses  
11800 Keele Street  
Vaughan, ON  
(one block north of  
Teston Road)  
T: 905.832.6955

Terra Greenhouses  
280 Britannia Rd  
Milton, ON  
(just West of Trafalgar)  
T: 905.876.4000

Terra Greenhouses  
#8 5th Concession  
Waterdown, ON  
(3 km north of  
Clappison's Corners)  
T: 905.689.1999



*Where colour lives!*

[www.terragreenhouses.com](http://www.terragreenhouses.com)



# Report from Ottawa Region

By Sandy Ives

*The iris season in Ottawa was very short for bearded iris.*

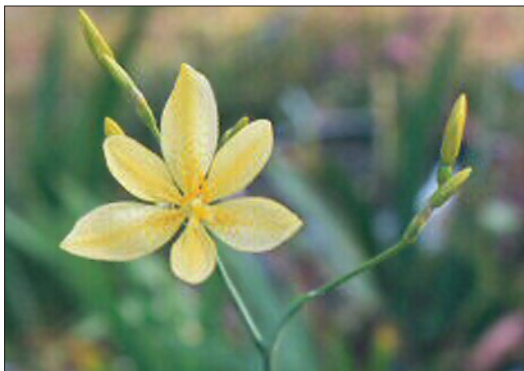
The median iris were started and finished in one week, and about 10 days ahead of schedule. Many Siberian buds were in color in May when we went to the AIS convention and the few TBs we have left were finished. The surprise of the early season was a very small species iris I have tentatively identified as *I. verna*. We are at the very limit of the range here and, while it has been in the garden for at least five years now, this year saw the first bloom.

The *pseudata* and *Japanese irises* were very early as well, but the cool temperatures in June resulted in a much longer bloom period—three weeks at least—for all. This was their second year in the garden and they are recommended to all who really would prefer to avoid digging. They increase more slowly than the Siberians and I anticipate I won't need to split them for at least another two years. They are available from several sources in the US, e.g.: Ensata Gardens (**John Coble** and **Bob Bauer** in Michigan [www.ensata.com](http://www.ensata.com)) and Draycott Gardens (**Carol Warner** in Maryland [www.draycott-gardens.com](http://www.draycott-gardens.com)).

Currently we have *I. x norrisii* (formerly *pandancanda x norrisii*, aka *Candy Lily*) in early bloom. They are marginal in Ottawa, but they survive without mulch when planted close to the foundations of the house.

**Plans for the 2011 season:** We are solarizing much of the garden this year and will be conducting soil sampling to ensure the soil can be made more acidic. The restrictions on pesticides make growing TBs in volume (40+) impossible for anyone in Ottawa who has a regular job outside the garden and has some respect for the law. The median iris classes and the beardless iris in general are more “friendly” to urban folk in this situation.

We are also planning our trip to Victoria for the 2011 AIS National Convention. We are highly tempted to bring our passports... we have a little list of gardens to visit along the way.



*I. x norrisii* is a cross pioneered by Sam Norris of Owensboro, Kentucky and is a hybrid of *Iris dichotoma* (syn. *Pardanthopsis dichotoma*) and *Belamcanda chinensis*. (D. Krumb, 08-NOV-03)

*Pandancanda x norrisii*, photo by Mark Cook, 2002

# CANADIAN IRIS

Alphabetically by Iris Name, 1896 to 2008

from CANADIAN HYBRIDIZERS compiled by Don McQueen and Chuck Chapman.

## Abbreviations:

Colour column - Descriptions are general guides ONLY - detailed descriptions are found in the AIS registration Check Lists.  
(bracketed codes)= Colour classification codes used by the AIS prior to 1959.

Lt.= Light      Md.= MediumDk.= Dark      rev = Standards have darker tones than the falls.

sq.= *squalens* blend

Year column - Bf.= Before

Note column - NR= Not Registered with AIS      c.= circa (about)      n= Not introduced

Numbered notes follow list

NAME	TYPE	COLOURS	YEAR	NOTE	HYBRIDIZER	LOCATION
ABITIBI	SIB	Lt.blue, blue-toned self (B1L)	1930		Preston	Ottawa
AFTON WATER	TB	Md.blue, blue-toned self (B1M)	1949	n	Miles	Ingersoll
AIRFORCE BLUE	TB	Md.blue, blue-toned self (B1M)	1941	n	Groff	Simcoe
AKIRA HORINAKA	SPX	Red-purple/violet	1999	n	Huber	Laval
ALGIERS	TB	Red yellow-toned feathered blend (R5)	1952		Bickle	Toronto
ALGONQUIN	TB	Dk.blended (sq.) blue-toned bicolour (S3D)	1931	14	Crow	Simcoe
ALGONQUIN PARK	AB	Russet blend	1959	2	Edmison-Zurbrigg	Brighton
ALICE AILEEN	TB	Blue self	1931		Brethour	Toronto
ALLSPICE	TB	Md.blended (sq.) yellow-toned self (S4M)	1941	n	Groff	Simcoe
ALMEDA	TB	Md.pinkish-red self (R7M)	1935	n	Groff	Simcoe
Amber Beauty	TB ?	(not recorded)	--	NR 5	not identified	(RBG)
Amethyst	TB	(not recorded)	bf.1958	NR 5	Winslow	(RBG)
AMYTIS	TB	Lt.yellow, yellow-toned rev. bitone (Y6L)	1942	n	Craigie	Toronto
ANCASTER BLUE RUFFLE						
	TB	Blue bitone	1993		McMillan	Norwich

ANCHORS AWEIGH	TB	Dk.blue, blue-toned self (B1D)	1941	n	Groff	Simcoe
ANTICOSTI PRELUDE	SPX	Violet self	2007		Huber	Laval
ANTICOSTI VISITOR	SP	Violet/Purple	2007		Huber	Laval
APACHE CARPET	SDB	Yellow-brown bicolor	2001		Chapman	Guelph
Appreciation	TB ?	(not recorded)	--	NR 5	not identified	(RBG)
ARCTIC CIRCLE	TB	Pure white self (WW)	1941	n	Groff	Simcoe
ARMOUR BRIGHT	TB	Yellow, blue-toned self (Y1)	1952		Edmison	Brighton
ARTIST'S PALLETTE	TB	Violet/butterscotch	2000		Chapman	Guelph
AUDRY COOK	TB	Md.blended (sq.) red-toned self (S7M)	1931	n	McEachran	Cartierville
AUTUMN EMBERS	SDB	Yellow/brown	1996		Chapman	Guelph
AUTUMN JESTER	SDB	Purple self	2000		Chapman	Guelph
BALLET IN BLUE	TB	Pale blue, blue -toned self (B1L)	1951		Miles	Ingersoll
BANFF	TB	White/pink-lavender-yellow	1959	2	Zurbrigg	Kingston
BANTAM PRINCE	SDB	Purple self	1999		Chapman	Guelph
BEATRICE JOYNT	TB	Md-dk.blue self	1963	1	Zurbrigg, Radford, Virginia	White
BEAUTIFUL LADY	TB	Yellow & brown (Y2)	1952		White	Summerland
BEE FLAMENCO	SP	Mauve bicolor	1992		Dumas-Quesnel, Laval	
BEL CAVALIER	TB	Md.reddish-blue bitone (B9M)	1945	n	Craigie	Toronto
BELFOR	TB	Blue-white self (W1)	1945	n	Craigie	Toronto
BELLE PROMESSE	SP	Blue-bitone	1993		Huber	Laval
BELLE ROYALE	SPX	Violet bitone	2008		Boland,	St.John's, Nfld.
BERNICE CARLAN	TB	Yellow/ivory plicata	1999		Burr	Windsor
BERN JUBY	TB	Red bitone	1957		Zurbrigg	Kingston
BEYOND RECALL	SDB	Violet/olive	2002		Chapman	Guelph
BILLIE BOY	SDB	Dk.red bluish-toned self (R1D)	1932	n	Miles	Ingersoll
BLACK GNAT	TB	Dk.red bluish-toned self (R1D)	1941	n	Groff	Simcoe
BLACK ICE	SDB	Dk.violet blend	2001		Chapman	Guelph
BLACK OUT * (1st)	TB	Dk.reddish-toned blue self (B7D)	1941	n	Groff	Simcoe
BLISS	TB	Greenish-yellow self	1965	1	Zurbrigg, Radford, Virginia	

BLISS CARMEN	TB	Pure white self (VWV)	1942	n	Craigie	Toronto
BLOOD AND SAND	TB	Md.blended (sq.) red-toned bicolour (S9M)	1946	n	Craigie	Toronto
B'LOU CLARK	SDB	Dusty pink blend	2002		Chapman	Guelph
BLUE BOUQUET	TB	Blue, blue-toned self (B1)	1954		Bickle	Toronto
BLUE HAT BOY	SDB	Blue/tan	2007		Chapman	Guelph
BLUE JESTER	TB	Blue, blue-toned self (B1)	1954		Bickle	Toronto
BLUE LIGHT	TB	Lt.blue, blue-toned self (B1L)	1932		Balfour	St.Catharines
BLUE MONDAY	TB	(not recorded)	1943	n	Webb	Toronto
BLUE RIPPLES	SIB	Md.blue, blue-toned self (B1M)	1940	n	Craigie	Toronto
BLUE ROSE	EV	Md.blue, blue-toned self (B1M)	1945	n	Christainsen	Victoria
BLUE SCANDAL	TB	Blue, blue-toned self (B1)	1954		Bickle	Toronto
BLUE STREAK * (1st)	TB	Blue-white self (W1)	1941	n	Groff	Simcoe
BLUE VISTA	TB	Pale blue self (B1P)	1959	11	Chamberlain	(California)
BLUEBERRY TART	SDB	Dk.violet/reddish tan	2002		Chapman	Guelph
BLUZUGRAF	TB	Blue self	by 1939	n	Groff	Simcoe
BONAVISTA	SPX	Blue bitone	2002		Huber	Laval
BONUS BABY	SDB	Yellow bitone	2004		Chapman	Guelph
Brenda Lou	TB ?	(not recorded)	--	NR	5 (not identified)	(RBG)
BRIGHTER DAYS	SPX	Violet bitone	2002		Huber	Laval
BRISTOL'S HOPE	SPX	Blue/blue-violet	2008		Boland	St.John's, Nfld.
BRITISH GRENADIER	TB	Dk.red yellow-toned self (R4D)	1941	n	Groff	Simcoe
BROTHERHOOD GIFT	SPX	Rose-pink/Violet	2007		Huber	Laval
BROWN HACKLE	TB	Md.blended (sq.) yellow-toned self (S4M)	1941	n	Groff	Simcoe
BUCKSKIN BABE	TB	Orange-tan blend	2007		Chapman	Guelph
bulleyana	SIB SP	Md.blue blue-toned bitone (B3M)	(1929)	12	(Dykes)	
BUTTERSCOTCH CARPET	SDB	Butterscotch self	1994		Chapman	Guelph
CAEZAR	SIB	Dk.reddish toned blue self (B7D)	1930		Morgan	Montreal
CAESAR	SIB	Dk.reddish toned blue self (B7D)	(1974)	13	Morgan	Montreal

CAEZAR'S BROTHER	SIB	Blue self	1931	Morgan	Montreal
CAESAR'S BROTHER	SIB	Blue self	(1949)	13	Montreal
CANADAWAY * (1st)	TB	Pure white self (WW)	1945	Cousins	London
CANADAWAY (2nd)	TB	Blue-white self (W1)	1952	Cousins	London
CANADIAN BEAUTY	TB	Lt. reddish-blue bitone (B9L)	1936	Crow	Simcoe
CANADIAN BORDER	BB	White self	1997	Chapman	Guelph
CANADIAN GOLD	IB	Yellow, yellow-toned self (Y4)	1930	Preston	Ottawa
Canadian Northland	TB	Mauvish-white/white bitone	1966	NR 5 Burr	Windsor
CANADIAN STREAKER	TB	Lt. blue self	1997	Chapman	Guelph
CANALETTO	SP	Purple bitone	1992	Huber	Laval
CANDID PARAGON	SPX	Violet bitone	2003	Huber	Laval
CANTIQUE	SDB	Orange blend	2001	Chapman	Guelph
CARIBOO	AB	Blue-violet	1953	Saunders	Cottonwood
CARLING	TB	Lt. blended (sq.) yellow-toned self (S4L)	1930	Preston	Ottawa
CARMEL SUNDAE	TB	white/caramel bicolor	1960	2 Zurbrigg	Kingston
CARPET SCENTATION	SDB	Olive blue self	2003	Chapman	Guelph
CAST ASHORE	SPX	White & rose self	1998	Chapman	Guelph
CEDRIC CARON	TB	Yellow/eddisch purple	2007	LeBrun, St. Roch des	
CENTENNIAL GOLD	TB	Dk. gold self (Y1D)	Aulnaies	8 Kummer	Preston
CEZANNE	SP	Violet bitone	1992	Huber	Laval
CHAGALL	SP	Lilac bitone	1992	Dumas-Quesnel,	Laval
CHAUDIERE	SIB	Lt. blue, blue-toned self (B1L)	1930	Preston	Ottawa
CHERRY WEB	SDB	Pink/red	2002	Chapman	Guelph
CHIMERA	IB	White/ivory chartreuse blend	1960	1 Zurbrigg	Kingston
China Blue	(3rd) SIB	Lt. blue, blue-toned self (B1L)	1936	Preston	Ottawa
CHOCOLATE TEMPTATION	SDB	Plum/chocolate	2004	Chapman	Guelph
CHU CHIN CHOW	TB	Md. yellow, yellow-toned self (Y4M)	1941	n Groff	Simcoe



CITY OF STRATFORD	TB	Dk.purplish-red self (R7D)	1946	n	Miles	Ingersoll
CO-ED FLIRT	SDB	Tan-pink/white ground	2003		Chapman	Guelph
COLOUR MUSIC	TB	Md.blended (sq.) red-toned bicolour (S9M)	1941	n	Groff	Simcoe
COMTESSA DE DIA	TB	Lt.red yellow-toned bitone (R6L)	1940	n	Craigie	Toronto
COOL WATER	TB	Pale blue, blue-toned self (B1)	1954		Bickle	Toronto
COPPER TOKEN	TB	Md.blended (sq.) yellow-toned self (S4M)	1941	n	Groff	Simcoe
CORAL CARPET	MDB	Lt.Orange self	1999		Chapman	Guelph
CORA LEE WHITE	TB	Blue-white self (W1)	1962		White	Summerland
CORAL SANDS	TB	Md.blended (sq.) red-toned bicolour (S9M)	1938	n	Groff	Simcoe
COUREUR DE BOIS	TB	Dk.blended (sq.) yellow-toned bicolour (S6D)	1938	n	Groff	Simcoe
CREAM GRAPE	TB	Yellow-white self (W4)	1942	n	Craigie	Toronto
CREAM PIXIE	SDB	Lt.yellow self	1996		Chapman	Guelph
CRYSTAL CARPET	SDB	Blue self	2004		Chapman	Guelph
CRYSTAL LAKES	TB	(not recorded)	(1949)	n	Cousins	London
CRYSTAL STIPPLE	TB	Lt.white blue-tones feathered (W2L)	1941	n	Groff	Simcoe
CURRIER McEWEN	SPX	Violet-blue bitone	2002		Huber	Laval
CYCLOPS	SDB	Rose-violet/yellow-tan	2003		Chapman	Guelph
DA VINCI	SP	Violet bitone	1992		Huber	Laval
DARAJE	TB	Lt.yellow, yellow-toned self (Y4L)	1942	n	Craigie	Toronto
DARK DARLING	SPX	Dk.violet self	2007		Huber	Laval
DAVID ARNOTT	TB	Dk.pinkish-red bitone (R9D)	1932	n	Saunders	London
DAWSON	TB	Lt.yellow, yellow-toned self (Y4L)	1930	n	Preston	Ottawa
DEAD SEA SCROLLS	AR	Lavender-violet/red-lavender bitone	1960		Edmison-Zurbrigg	Brighton
DEEP PINK	TB	Dp.bluish-pink self (R1L)	1957	1	Edmison	Brighton
DESERT PASSPORT	IB	Yellow blend	2003		Chapman	Guelph
DIDERIDOO	SDB	Yellow blend	2005		Chapman	Guelph
DORA CAMPBELL	TB	Md.blue, blue-toned self (B1M)	1928		Blackcock	Meadowvale
DOROTHY GEE	TB	Pink rev. bitone self	1964		Little	Richmond Hill
DOROTHY V	CA	Cream self	1991		Miller	Duncan
Douglasiana pygmeae	SP	Dk.blue blue-toned bicolour (DB3M)	(1896)		Macoun	Ottawa

DRACULA	TB	Lt.blended (sq.) blue-toned self (S1L)	1935	n	Groff	Simcoe
DRAGON'S DEN	SDB	Dusty rose pink	2002		Chapman	Guelph
DUSK OF THE GODS	IB	Dk.red yellow-toned bitone (R6D)	1939	n	Craigie	Toronto
DUST BUSTER	SDB	Yellow/white ground	2003		Chapman	Guelph
DUSTY MILLER	TB	Md.blended (sq.) yellow-toned self (S4M)	1941	n	Groff	Simcoe
DYNAST	TB	Yellow, yellow-toned rev. feathered (Y5D)	1945	n	Craigie	Toronto
DYSON MOORE	SPX	Violet self	1998		Huber	Laval
EAGER BOY	TB	Golden yellow self	1963	1	Zurbrigg, Radford, Virginia	
EGRET	TB	Yellow-white self (W4)	1938	n	Groff	Simcoe
ELIZABETH OF ENGLAND	TB	Lt.blue, blue-toned self (B1L)	1949	n	Miles	Ingersoll
EMERGENCY RESPONSE	BB	Pink/apricot	1999		Conarty	Vernon
ENFANT PRODIGE	SPX	Lilac/Violet bitone	1993		Huber	Laval
ERAMOSA BLUSHING BRIDE						
	TB	Lt.pink, silvery blue tones	2005		Chapman	Guelph
ERAMOSA ENIGMA	SDB	Lt.violet wash	2001		Chapman	Guelph
ERAMOSA FRECKLES	MTB	Tan/violet plicata	2007		Chapman	Guelph
ERAMOSA MISS	BB	Lt.apricot	1998		Chapman	Guelph
ERAMOSA PHOENIX	SDB	Wine red self	2003		Chapman	Guelph
ERAMOSA SKIES	SDB	Lt.blue	1996		Chapman	Guelph
ERAMOSA SNOWBALL	SDB	White self	1999		Chapman	Guelph
ERIE	TB	Lt.blue, blue-toned self (B1L)	1941	n	Groff	Simcoe
EURASIA-BLOOD	SPX	Violet self	1999	n	Huber	Laval
EURASIA BRIDE	SPX	Pink/white	1999	n	Huber	Laval
EURASIA-LOVE	SPX	Pink self	1999	n	Huber	Laval
EXIT TUNNEL	IB	Blue-violet blend	2004		Chapman	Guelph
FANCY BISCUIT	TB	Yellow bitone	1984		Smith	Toronto
FANCY FREE * (1st)	TB	Blue blue-toned bitone (B3M)	1930	n	Wallace-Saunders, Toronto	
FERN FRASER	TB	Yellow/white bicolour	1959	1	Zurbrigg	Kingston
FIERY CROSS	TB	Dk.blended (sq.) red-toned bicolour (S9D)	1937	n	Groff	Simcoe
FLASHED OPAL	TB	Lt.blue, blue-toned self (B1L)	1941	n	Groff	Simcoe

FLIGHT DIRECTOR	SDB	Luminata plicata/yellow & burgundy	2002	Chapman	Guelph
FOREVER BLUE	SDB	Lt.blue-violet	1997	Chapman	Guelph
FOREVER VIOLET	MDB	Violet self	2002	Chapman	Guelph
FORTY-NINER	TB	Dk.yellow, yellow-toned self (Y4D)	1941	Groff	Simcoe
FRANCIS CABOT	SPX	Violet/violet-blue	1998	Huber	Laval
FRONTIER LADY	TB	Creamy yellow self	2001	Chapman	Guelph
FROST BABY	SDB	Blue blend	2004	Chapman	Guelph
FROST END	Pseud	White self	2002	Huber	Laval
FUZZ BUSTER	SDB	Cream self	2003	Chapman	Guelph
GABRIELLA	TB	Md.pinkish-red bitone (R9M)	1945	Craigie	Toronto
GARDEN BRIDE	TB	White self	1998	Chapman	Guelph
GARDEN PRINCESS	TB	Lt.purple self	2006	Chapman	Guelph
GATINEAU	SIB	Lt.blue, blue-toned self (B1L)	1930	Preston	Ottawa
GENESIS PROJECT	SDB	Burgundy & yellow	2002	Chapman	Guelph
GENTIAN FALLS	TB	White/blue bicolor	1959	Zurbrigg	Kingston
GENTLE LIFT	SPX	Blue self	2002	Huber	Laval
GEORGE RODIONENKO	SPX	purple-violet self	1999	Huber	Laval
GIANT ORCHID	TB	Md.red bluish-toned bitone (R3M)	1944	Broddy	Toronto
GLADNESS	SDB	Dk.red bluish-toned self (R1D)	1932	Miles	Ingersoll
GLORIANA *	TB	Lt.yellow, yellow-toned bitone (Y6L)	1939	Craigie	Toronto
GOGO BOY	SP	Lt. violet self	1992	Dumas-Quesnel	Laval
GOLD BEAM	TB	Dk.yellow reddish-toned self (Y7D)	1944	Broddy	Toronto
GOLD PAGODA	Pseud	Yellow bitone	2002	Huber	Laval
GOLDEN SHIMMER	TB	Dk.yellow, yellow-toned self (Y4D)	1945	Miles	Ingersoll
GOLD STRIKE	TB	Dk.yellow, yellow-toned bitone (Y6D)	1941	Groff	Simcoe
GOYA	SP	Lilac/violet bitone	1992	Dumas-Quesnel	Laval
GRACEFUL PRESENCE	SP	Rose/blue	2003	Huber	Laval
GRAND OPERA	TB	Dk.blended (sq.) red-toned bicolor (S9D)	1939	Brethour	Toronto
GRAPE INVADER	SDB	Tan/violet	2004	Chapman	Guelph
GRAY NUN	TB	Md.blended (sq.) blue-toned bicolor (S3M)	1942	Craigie	Toronto

GRAY SISTER	TB	Md.blended (sq.) blue-toned bicolour (S3M)	1942	n	Craigie	Toronto
GREASED LIGHTNING	SDB	Violet wash	2001		Chapman	Guelph
GREAT GUNS	TB	Dk.blended (sq.) blue-toned self (S1D)	1941	n	Groff	Simcoe
GREAT LAKES	TB	Lt.blue, blue-toned self (B1L)	1938	9	Cousins	London
GREEN GOLD	TB	Md.yellow, yellow-toned self (Y4M)	1941	n	Groff	Simcoe
GREEN HORNET	SDB	Yellow-green/olive	2001		Chapman	Guelph
GUMMY BEAR	SDB	Yellow/olive	2007		Chapman	Guelph
GUNGA DIN * (1st)	TB	Dk.yellow, yellow-toned self (Y4D)	1941	n	Groff	Simcoe
GUNNAR GOLD	TB	Md.yellow, yellow-toned self (Y4M)	1941	n	Groff	Simcoe
GUYLAINE LORD	TB	Pink bitone	2007		LeBrun, St.Roch des	
Aulnaies						
GWYNNE	TB	Md.reddish-blue bitone (B9M)	1930	n	Preston	Ottawa
GYPSY SWEETHEART	TB	Lt.bluish-pink self (R1L)	1941	n	Groff	Simcoe
HADRIAN	SIB	(not recorded)	1931	n	Morgan	Montreal
HAPPY CHANCE	TB	Lt.bluish-red self (R1L)	1939		Blacklock	Meadowvale
HARWOOD	TB	Dk.reddish-toned blue self (B7D)	1940		Brethour	Toronto
HAZY MORN	TB	Md.blended (sq.) blue-toned self (S1M)	1945	n	Miles	Ingersoll
HEADWATERS	SDB	Rose plicata	2003		Chapman	Guelph
Heart of Gold	TB	(not recored)	--	n	Bickle	Toronto ?
HEATHER CARPET	SDB	Rosy purple self	1999		Chapman	Guelph
HEIDI NYDEGGER	SPX	Purple/blue-violet	2007		Huber	Laval
HELEN ROGERS	TB	Lt.blue blue-toned bitone (B3L)	1927		Blacklock	Meadowvale
HENNA RINSE	TB	Dk.red yellow-toned feathered (R5D)	1958		Dyer	Richmond
HERBAL TEA	SDB	Gold/tan	2001		Chapman	Guelph
H.H. GROFF	TB	Md.yellow, yellow-toned self (Y4M)	1935	n	Groff	Simcoe
HIGHBROW	TB	Md.yellow, red-toned self (Y7M)	1941	n	Groff	Simcoe
HINDU	TB	Lt.blended (sq.) red-toned bicolour (S9L)	1945	n	Craigie	Toronto
HOCHELAGA	TB	Lt.red bluish-toned bitone (R3L)	1931		Morgan	Montreal
HON. H.A. BRUCE	TB	Dk.reddish-toned blue self (B7D)	1935	n	Groff	Simcoe
HONOURED QUEEN	TB	White/violet bicolour	1997		Chapman	Guelph

HUMBUG	MDB	Apicot/dp.orange	2000	Chapman	Guelph
ICED UP	MTB	White self	2003	Chapman	Guelph
ICED WINE	SDB	Rosy-violet luminata	1999	Chapman	Guelph
ICEDROP	SDB	Blue-white self (W1)	1939 n	Craigie	Toronto
INDIANETTE	TB	Red-purple self	1963 1	Zurbrigg, Radford, Virginia	
INKPOT	TB	Dk.blue, blue-toned self (B1D)	1938 n	Groff	Simcoe
INNU SPRING	SPX	Blue & white/blue	1999 n	Huber	Laval
INSPECTOR MICKEY	SDB	Dk.purple self	2006	Chapman	Guelph
Irene	TB	(unknown)	1960 NR 5	Burr	Windsor
IRRESISTIBLE	TB	Ivory/yellow bicolour	1963 1	Zurbrigg, Radford, Virginia	
IRVING	TB	(not recorded)	1930 n	Preston	Ottawa
ISLANDS CHEER	SP	Violet-blue self	1998 n	Huber	Laval
JACK O'LANTERN	TB	Dk.yellow, pinkish-toned bitone (Y9D)	1938	Groff	Simcoe
JANE'S PALETTE	SDB	Red-black blend	2007	Chapman	Guelph
JAVA BEAUTY	TB	Brown self (YO5D)	1958	Dyer	Richmond
JAVA HEAD	TB	Lt.blended (sq.) yellow-toned self (S4L)	1938 n	Groff	Simcoe
JEAN BELIVEAU	TB	Pale blue self	2006	LeBrun, St.Roch des	
Aulnaies					
JIM WALLACE	TB	Lt.blue, blue -toned self (B1L)	1932	Wallace-Saunders	Toronto
JOLIETTE	SPX	Violet bitone	1998	Huber	Laval
JOYFUL WIDOW	SPX	Blue bitone	2002	Huber	Laval
J. S. WOODSWORTH	TB	Dk.reddish-toned blue self (B7D)	1942 n	Bartlett	Toronto
JUDEAN STAR	AR	Pale violet/white	1967	Laur	Dunnville
JUICED UP	SDB	Gold/orange	2003	Chapman	Guelph
JUNE GLAMOUR	TB	(not recorded)	(1947) n	Cousins	London
JUNE QUEST	TB	Lt.pinkish-red self (R7L)	1945 n	Cousins	London
JUNE SKIES * (1st)	TB	Md.blue, blue-toned self (B1M)	1936 n	Groff	Simcoe
JUNGLE GINGER	TB	Md.red yellowish-toned self (R4M)	1941 n	Groff	Simcoe
J. W. LYON	TB	(not recorded)	1931	McSkimming	Guelph
KAMI KAY	TB	Blue-white self (W1)	1961	Wadland	Sarnia



KATE FRYER HARRIS	SDB	White-lavender plicata	1998	Conarty	Vernon
KATHLEEN FETHERSTON	TB				
Kenabec	SIB ?	Dk. yellow, pinkish-toned bitone (Y9D)	1932	Saunders	London
KENOGAMI	SIB	(not recorded)	--	Preston	Ottawa
KERRY DANCE	MDB	Dk. blue, blue-toned self (B1D)	1938	Preston	Ottawa
KERRY LEA	SDB	Lt. violet self (V1L)	1957	Zurbrigg	Kingston
KERRY PIPER	MDB	Violet self	1957	Zurbrigg	Kingston
KLINGON PRINCESS	SDB	Dk. violet self (V1D)	1957	Zurbrigg	Kingston
KOI BITO	TB	Yellow/violet wash	1997	Chapman	Guelph
		Peach/brown	2006	LeBrun, St. Roch des	
			Aulnaies		
KOOTENAY	SIB	Lt. blue, blue-toned self (B1L)	1930	Preston	Ottawa
KRIEGHOFF	SP	Lt. purple/red-purple	1992	Huber	Laval
KUM-ON	AB	Violet blend	1954	Kummer	Preston
LA BLEUETIERE	SP	Violet/violet-blue	2007	Huber	Laval
LABRASKA	SPX	White/amethyst violet	1999	Huber	Laval
LA METAIRIE	SPX	White-lavender blend	2007	Huber	Laval
LACE NEGLEGEE	TB	White with peach edge	1968	Huber	Laval
LADY IN LACE	TB	Buttercup yellow/white, yellow edge	1955	Zurbrigg, Radford, Virginia	
LADY MINE	TB	Lt. yellow, yellow-toned self (Y4L)	1939	Chamberlain	(California)
LADY PHYLLIS	TB	Lt. blue, blue-toned self (B1L)	1934	Craigie	Toronto
LAGOON	TB	Lt. blended (sq.) yellow-toned self (S4L)	1937	Neel	Duncan
LAKE LOUISE	TB	Lt. blue, blue-toned self (B1L)	1941	Groff	Simcoe
LAKE ONTARIO	SIB	Md. blue, blue-toned self (B1M)	1939	Groff	Simcoe
LAKE SUPERIOR	SIB	Dk. reddish-toned blue self (B7D)	1939	Craigie	Toronto
LAMPLIGHTER TB	Md. yellow,	pinkish-toned bitone (Y9M)	1941	Craigie	Toronto
LA STREGA	TB	Lt. blended (sq.) blue-toned self (S1L)	1939	Groff	Simcoe
LAST POST	TB	Dk. blue, blue-toned self (B1D)	1941	Craigie	Toronto
LASTING LOYALTY	SPX	Violet blue self	2007	Groff	Simcoe
LATE CALL	SPX	Blue bitone	2002	Huber	Laval

LAURA SECORD	TB	Md.pinkish-red self (R7M)	1936	n	Miles	Ingersoll
LAURENTIAN LADY	TB	Light Blue-purple self (B1P)	1953		Moffatt	Hamilton
LAURENTIAN SUNSET SPX		Purplish violet bitone	1998	n	Huber	Laval
LAVENDER	TB	Light blue, blue-toned self (B1L)	1947		Bickle	Toronto
LAVENDER BLEACH	SPX	Lavender-violet/lavender	1999	n	Huber	Laval
LAVENDER GEM	TB	Lt.pinkish-blue bitone (B9L)	1944	n	Broddy	Toronto
LE BEAU REAL	TB	Whitish-yellow self	2007		LeBrun	St.Roch des
Aulnaies						
LEMON CHIFFON	TB	Md.yellow, yellow-toned self (Y4M)	1944	n	Bartlett	Toronto
LEMON ON ICE	SDB	Yellow & white blend	1994	6	Chapman	Guelph
LEPRECHAUN'S PURSE	SDB	Greenish-cream self	1999		Chapman	Guelph
LEVINA COPELAND	TB	Orchid purple (V3)	1957		Edmison	Brighton
LIGHT REFLECTION	SPX	White-violet self	2007		Huber	Laval
LIGHTS OUT	TB	Dk.reddish-toned blue self (B7D)	1941	n	Groff	Simcoe
LILLY RILEY	TB	White/purple bicolor	1985		Riley	Cambridge
LIME SCENTSATION	SDB	Greenish yellow white self	2000		Chapman	Guelph
LIMESICLE	SDB	Green glaciata	2000		Chapman	Guelph
LISTOWELL	IB	Yellow self	1957		Zurbrigg	Kingston
LITTLE FIRECRACKER	SDB	Orange blend	1997		Chapman	Guelph
LITTLE PRINCE	SPX	Violet-blue bitone	2002		Huber	Laval
LORI WADLAND	TB	Blue-white self (W1)	1959		Wadland	Sarnia
LORRAINE MORGAN * TB		Md.pinkish-red self (R7M)	1924	n	Morgan	Montreal
MADAWASKA	SIB	Md.blue, blue-toned self (B1M)	1930		Preston	Ottawa
MALVOLIO	TB	Dk.yellow, yellow-toned self (Y4D)	1937		Brethour	Toronto
MAPLE MADNESS	SDB	Tan self	2000		Chapman	Guelph
MARGARET LOUISE	TB	Lt.blended (sq.) red-toned self (S7L)	1940	n	Craigie	Toronto
MARGARET ZURBRIGG	TB	Bluish-white/dp.violet blue	1963	1	Zurbrigg,	Radford, Virginia
MARIA LA BLANCA	IB	Yellow-white self (W4)	1939	n	Craigie	Toronto
MARIE CHUARD	SPX	Violet self	1998	n	Huber	Laval
MARY BARTLETT	TB	Dk.pinkish-red bitone (R9D)	1944	n	Bartlett	Toronto

MARY NISSLEY	TB	Dk.blended (sq.) blue-toned self (S1D)	1937	n	Groff	Simcoe
MARY WHITE	TB	White self	1959	2	Zurbrigg	Kingston
MATANE	SIB	Pure white self (WW)	1936		Preston	Ottawa
MATISSE	SP	Violet bitone	1992		Huber	Laval
MATTAWIN	SIB	Blue self	1930		Preston	Ottawa
MAUREEN MACKENZIE	TB	Rose plicata (W2R)	1961		Burr	Windsor
MAUNA LOA BABY	SDB	Orange/purple	1999		Conarty	Vernon
MAYBELLE MARTYN	TB	Lt.apricot-pink self (R5L)	1957		Edmison-Zurbrigg	Brighton
MEMORY LANE	TB	Dk.yellow, pinkish-toned bitone (Y9D)	1941	n	Groff	Simcoe
MIDNIGHT SUN	TB	Blue, blue-toned self (B1D)	1945	n	Cousins	London
MIDWINTER	TB	Blue-white self (W1)	1959		Wadland	Sarnia
MILES AWAY	TB	Dk.blended (sq.) yellow-toned self (S4D)	1932		Miles	Ingersoll
MINDEMOYA	TB	Md.blue, blue-toned self (B1M)	1952		Miles	Ingersoll
MINI CASCADE	Pseud	Yellow self	2002		Huber	Laval
MIRABEL GLOW	SPX	Pale red/violet	1998		Huber	Laval
MISS MOWAT	TB	Md.blue blue-toned bitone (B3M)	1927		Blacklock	Meadowdale
MISS SIMCOE	TB	Lt.yellow, yellow-toned bitone (Y6L)	1938	n	Groff	Simcoe
MOBY DICK * (1st)	TB	Dk.reddish-toned blue self (B7D)	1941		Groff	Simcoe
MODULATION	TB	Whitish-yellow self	1960	1	Zurbrigg	Kingston
MONET	SP	Lilac/violet bitone	1992		Huber	Laval
MONTREAL	TB	Dk.reddish-blue bitone (B9D)	1931	n	Morgan	Montreal
MONTY	TB	Md.red yellowish-toned self (R4M)	1945	n	Miles	Ingersoll
MOORISH PRINCESS	TB	Reddish-violet bitone	1984		Smith	Toronto
MORELOWINE	TB	Dk.pinkish-red self (R7D)	1944		Bartlett	Toronto
MOTHER O'MINE	TB	Pure white self (WW)	1937	n	Groff	Simcoe
MOUNT ROYAL	TB	Dk.reddish-blue bitone (B9D)	1929	7	Morgan	Montreal
MRS. FRANCIS WOOD	TB	Lt.bluish-red self (R1L)	1931	n	Wood	Toronto
MRS. HERBERT BRUCE	TB	Lt.blended (sq.) yellow-toned self (S4L)	1935	n	Groff	Simcoe
MRS. J.G. TRAFFORD	TB	Pinkish-toned white self (W7L)	1936	n	Groff	Simcoe
MRS. RUTHERFORD	TMB	Light blue, blue-toned self (B1L)	1944		Fletcher	Rosland

Mt. Assiniboine MURRAYANA	TB SP	Pale blue self Pure white self (WW)	bf. 1960 1936	n	5	Rolph Murray	Weston St. John's, Nfld.
MY WHITE KNIGHT	TB	White self	2003			Chapman	Guelph
NACHEKO	TB	Dk.violet bitone (DV3)	1953			Saunders	Cottonwood
NANCY BIEHL	TB	Lt.yellow reddish-toned self (Y7L)	1945	n		Miles	Ingersoll
NAUGHTY MARIETTA	TB	Md.blended (sq.) red-toned bitone (S9M)	1941			Groff	Simcoe
Nelson	SIB	Pure white self (WW)	(1935)	n		Preston	Ottawa
NEW APPROACH	SPX	Violet-blue self	2007			Huber	Laval
NEXT GENERATION	SDB	Tan-green blend	2000			Chapman	Guelph
NIGHTCAP	TB	Dk.red bluish-toned self (R1D)	1941			Groff	Simcoe
NIGHT FLASH	SP	Blue-violet self	1998	n		Huber	Laval
NINA NAAS *	(1st) TB	Md.yellow, yellow-toned self (Y4M)	1937	n		Groff	Simcoe
NINA NAAS	(2nd) TB	Md.yellow, yellow-toned self (Y4M)	1941	n		Groff	Simcoe
NIPIGON	SIB	Md.yellow, yellow-toned self (Y4M)	1930			Preston	Ottawa
NORTHERN EXPOSURE	SDB	Yellow/blue plicata	2002			Chapman	Guelph
NORTHERN ONTARIO	TB	Dk.yellow, yellow-toned self (Y4D)	1945	n		Craigie	Toronto
NORTHERN SPY	TB	Apple red bitone	1960	1		Zurbrigg	Kingston
NORTHERN VALENTINE	Set	Blue-violet self	1997			Chapman	Guelph
NOUVEL AGE	SP	Purple bitone	1992			Huber	Laval
NUTMEG	TB	Md.yellow, pinkish-toned bitone (Y9M)	1941	n		Groff	Simcoe
OEDIPUS REX	TB	Yellow self (Y4)	1954	2		Zurbrigg	Stratford
OKANAGAN BLIZZARD	TB	White self	1992			Conarty	Vernon
OKANAGAN LASS	TB	Cream/yellow	1992			Conarty	Vernon
OKANAGAN PEACH	TB	Purple bitone	1998			Conarty	Vernon
OKANAGAN SEASHELL	TB	Pink/peach bicolour	1999			Conarty	Vernon
OKANAGAN TWILIGHT	TB	Blue-violet bicolour	1998			Conarty	Vernon
OKON	AB	Red violet self (RV1)	1952			Kummer	Preston
OLIVE DUN	TB	Dk.yellow, blue-toned self (Y1D)	1941	n		Groff	Simcoe
ONCE MHOR	AB	Mauve/lavender	1959	1		Zurbrigg	Kingston

OPALESQUE	TB	Yellow blend (Y5)	1952	White	Summerland
ORANGE DAIQUIRI	SDB	Orange self	2003	Chapman	Guelph
ORIENTAL DAWN	SPX	Violet-white self	1999	Huber	Laval
ORIENTAL TOUCH	SP	Violet bitone	1992	Huber	Laval
OTON-TALA	TB	Pinkish-toned rev.feathered (W8M)	1945	Craigie	Toronto
OTTAWA	SIB	Dk.blue blue-toned feathered (B2D)	1930	Preston	Ottawa
OYODO	JI	Single dk.blue (6BD)	c.1911	Macoun	Ottawa
PADDLE SONG	TB	Lt.blended (sq.) yellow-toned self (S4L)	1938	Groff	Simcoe
PAGAN GOLD * (1st)	TB	Deep yellow self (?)	1947	Miles	Ingersoll
PAN FOR GOLD	IB	Yellow bitone	2007	Chapman	Guelph
PARADIGM SHIFT	SDB	Violet-blue plicata	2006	Chapman	Guelph
PARCHMENT SCROLLS	AB	Lavender self (V5)	1959	Zurbrigg	Kingston
PARK-SPARK	SPX	Violet bitone	2002	Huber	Laval
PARTY ANIMAL	SDB	Apricot/burgundy	2001	Chapman	Guelph
PARYSATIS	TB	Lt.bluish-red self (R1L)	1946	Craigie	Toronto
PAUL DEFIANT	TB	Dk.reddish-toned blue self (B7D)	1941	Groff	Simcoe
PAULINE JOHNSON	TB	Md.blended (sq.) yellow-toned self (S4M)	1937	Groff	Simcoe
PEARL MAIDEN	TB	Blue yellow-toned self (B4L)	1939	Craigie	Toronto
PEARLY PEAK	TB	Lt. pinkish-toned white bitone (W9L)	1937	Groff	Simcoe
PEIRE VIDAL	TB	Md.pinkish-red bitone (R9M)	1942	Craigie	Toronto
PELLAN	SP	Violet bitone	1992	Huber	Laval
PEMBINA	SIB	Blue, blue-toned self (B1D)	1930	Preston	Ottawa
PERSIAN CARPET	SDB	Rosy-iliac	2000	Chapman	Guelph
PERSIAN PUSS	IB	Lt.blended (sq.) blue-toned self (S1L)	1942	Craigie	Toronto
PIANISSIMO	TB	Yellow-reddish orange (YOR4)	1953	Edmison	Brighton
PICKANOCK	SIB	Dk.blue blue-toned rev. bitone (B3D)	1936	Preston	Ottawa
PINK BISQUE	TB	Lt.pinkish-red self (R7L)	1945	Craigie	Toronto
PINK ETCHING	TB	Lt.pinkish-white feathered (W8L)	1943	Webb	Toronto
PINK GARLAND	TB	<i>Dp.pink self (O1P)</i>	1959	11 Chamberlain	Toronto (California)
PINK LOTUS	TB	Lt.pinkish-red self (R7L)	1933	Neel	Duncan



Pirate	TB	Dk.blended (sq.) blue-toned bicolour (S3D)	1930	n	14	Crow	Simcoe
PLATINUM BLOND	TB	Yellow-toned white bitone (W6M)	1938			Groff	Simcoe
PLAY IT AGAIN	TB	Lavender/white	1982			Preston, F.	Hamilton
PLUM POINT	SPX	Dk.blue-violet bitone	2008			Boland	St.John's Nfld
POINT PETITE	TB	Yellow/white	1985			Kummer	Cambridge
POINT RICHE	SP	Lavender-white/blue	1999	n		Huber	Laval
PORCELAIN STIPPLE	TB	Lt.white blue-tones feathered (W2L)	1941	n		Groff	Simcoe,
PRINCE CHARLES *	TB	(1st) <i>(not recorded)</i>	1954			Zurbrigg	Stratford
PRINCE CHARLES	TB	(2nd) Red tan/wine	1959	2		Zurbrigg	Kingston
PRINCESS ANNE	TB	Md.yellow/white	1953	3		Zurbrigg	Stratford
PROS DOMNA	TB	Md.red yellow-toned bitone (R6M)	1942	n		Craigie	Toronto
PURPLE POLKA	SP	Violet-blue/violet	1992			Dumas-Quesnel, Laval	Laval
PURPLET CHA-CHA	SP	Violet bicolour	1992			Dumas-Quesnel, Laval	Laval
QUE REVERIE	SPX	Blue bitone	2002			Huber	Laval
QUEBEC	SIB	Blended (sq.) blue-toned self (S1)	1931	n		Morgan	Montreal
QUEBELLE	SPX	Violet bitone	1998			Huber	Laval
QUIET WATER	SIB	Md.blue, blue-toned self (B1M)	1942	n		Craigie	Toronto
QUIVERING FLAME	TB	Orange-red flush/dk.red	1957			Zurbrigg	Kingston
RAMA	TB	Lt.blended (sq.) yellow-toned self (S4L)	1940	n		Craigie	Toronto
RECESIONAL	TB	Dk.red bluish-toned self (R1D)	1941	n		Groff	Simcoe
RED IBIS	TB	Md.red yellowish-toned self (R4M)	1941	n		Groff	Simcoe
RED KNIGHT	TB	Dk.pinkish-red self (R7D)	1933			Neel	Duncan
RED LAKE	SIB	Dk.pinkish-red self (R7D)	1942	n		Craigie	Toronto
RED RASPA	SP	Dk.violet bicolour	1992			Dumas-Quesnel, Laval	Laval
RED REVIVAL	TB	Purple/rose	1975			Preston, F.	Hamilton
RED ROYALE	SIB	Dp red-purple bitone	1991			Pearson	Kempville
REGATTA	TB	Lt.bluish-white self (W1)	1950			Cousins	London
RELUCTANT ANGEL	TB	White blend	2000			Chapman	Guelph
REV. S. T. BARTLETT	TB	Dk.yellow, yellow-toned self (Y4D)	1942	n		Bartlett	Toronto
RICHELIEU	SIB	White self	1930	n		Preston	Ottawa

RICHMOND GOLD	TB	Dk.yellow, blue-toned self (Y1D)	1964	Little	Richmond Hill
RICHMOND PINK	TB	Pink bitone	1974	Little	Richmond Hill
RICHMOND ROYAL	TB	Navy blue-violet self (BV1D)	1968	Little	Richmond Hill
RIDEAU	SIB	Blue, blue-toned self (B1L)	1930	Preston	Ottawa
RIMFIRE * (1st)	TB	Yellow-brown (YO5D)	1958	Dyer	Richmond
RIMOUSKI	SIB	Yellow-white self (W4)	1937	Preston	Ottawa
RIOPELLE	SP	Rosy maroon bitone	1992	Huber	Laval
RIPPLING RHYTHM	TB	Md.blended (sq.) red-toned bicolour (S9M)	1941	Groff	Simcoe
ROBERTA	TB	Lt.blended (sq.) yellow-toned self (S4L)	1938	Groff	Simcoe
ROWENCROFT PURPLE	SDB	Dk.reddish toned blue self (B7D)	1932	Blacklock	Meadowvale
ROYAL CANADIAN *	TB	(1st) Dk.pinkish-red bitone (R9D)	1937	Groff	Simcoe
ROYAL CANADIAN	TB	(2nd) Dk.blue-violet self (BV1D)	1959	Edmison	Brighton
ROYAL DALPHIN	SPX	Violet self	2007	Huber	Laval
ROYAL DRAGON	TB	Dk.red yellow-toned self (R4D)	1941	Groff	Simcoe
ROYAL DYNASTY	SPX	Violet self	2007	Huber	Laval
ROYAL LANCER	TB	Dk.red yellow-toned self (R4D)	1941	Groff	Simcoe
ROYAL OVERTIME	SDB	Purple self	2000	Chapman	Guelph
Royal Robe	TB	(not recorded)	bf. 1942	Bartlett	Toronto
ROYAL VELVET	TB	Dk.reddish-toned blue self (B7D)	1935	Frechette	Ottawa
ROYAL VISIT	BB	Aster violet self (V1D)	1959	Wadland	Samia
RUBY ERUPTION	SDB	Maroon & creamy yellow plicata	1997	Chapman	Guelph
RUBY PASSION	SDB	Ruby self	2004	Chapman	Guelph
RUFFLED ELEGANCE	TB	Red-violet blend (RV5)	1952	White	Summerland
RUMPELSTILTSKIN	SDB	Plum & yellow blend	2004	Chapman	Guelph
RUTH BRODDY	TB	Md.yellow, pinkish-toned bitone (Y9M)	1946	Miles	Ingersoll
SAILS AND SEAS	TB	White/violet-blue bitone	1954	Zurbrigg	Stratford
SALVO	TB	Dk.pinkish-red self (R7D)	1941	Groff	Simcoe
SAPPHIRE ROYALE	SIB	Dk.violet-blue bitone	1991	Pearson	Kempville
SARA SPENTZOS	TB	Ivory self	1960	Zurbrigg	Kingston
SARAH DOWD	TB	Lavender/rosy purple brown	1959	Zurbrigg	Kingston

SARGENT PRESTON	TB	Tan/Violet	2000	Chapman	Guelph
Schotel *	TB	Blue blue-toned bitone (B3)	(1896) n	Macoun	Ottawa
SEA WAVES	TB	Md.blue, blue-toned self (B1M)	1945 n	Craigie	Toronto
SEAWAY	TB	Blue, blue-toned self (B1)	1954	Bickle	Toronto
SEYMOUR BEAUTY	TB	Golden brown self (YOD5)	1958	Dyer	Richmond
SEYMOUR BLUE	TB	Blue, blue-toned self (B1)	1958	Dyer	Richmond
SHADOWY WAKE	TB	Pure white self (WW)	1941 n	Groff	Simcoe
SHAH JEHAN	TB	Dk.blended (sq.) red-toned bicolor (S9D)	1932	Neel	Duncan
SHEILA BARBARA	TB	Yellow-white self (W4)	1961	Burr	Windsor
Sheila Gracey	TB	(not recorded)	1965 NR 5	Burr	Windsor (RGB)
Sheila's Lantern	TB	(not recorded)	1965 NR 5	Burr	Windsor (RGB)
SHIP AHOY	TB	Md.blended (sq.) blue-toned self (S1M)	1941 n	Groff	Simcoe
SHOOTING STAR	TB	Md.yellow, yellow-toned self (Y4M)	1941 n	Groff	Simcoe
Siberica acuta	SIB	Dwarf md.blue self (B1M)	(1908)	Macoun	Ottawa
Siberica azurea *	SIB	Blue, blue-toned self (B1M)	1927	Macoun	Ottawa
SIBERICA BAXTERI	SIB	Lt.blue, blue-toned bitone (B3L)	(1912)	Macoun	Ottawa
Siberica Major *	SIB	Blue, blue-toned self (B1M)	1927	Macoun	Ottawa
Siberica maxima	SIB	(not recorded)	1928	Macoun	Ottawa
SIBERICA SNOWDRIFT	SIB	Pure white self (WW)	1939	Blacklock	Meadowdale
SIBLING'S PRIDE	SPX	Violet self	2007	Huber	Laval
SIR FREDERICK BANTING					
SIR JOHN EATON	TB	Dk.red, bluish-toned self (R1D)	1935 n	Groff	Simcoe
SKEENA	TB	Md.blue, blue-toned bitone (B3M)	1932	Brethour	Toronto
SKYDANCER	D-SIB	Blue, blue-toned self (B1D)	1938	Preston	Ottawa
SMOOTH SAILING	SDB	White self	1997	Chapman	Guelph
SMOOTH TRANSITION	TB	Blue, blue-toned self (B1)	1954	Bickle	Toronto
SNOW GLORY	SPX	Violet blue bicolor	1999 n	Huber	Laval
	TB	White self	1972	Smith	Toronto

SNOW LADY	TB	Pure white self (WW)	1938	n	Groff	Simcoe
SNOW MAIDEN	SDB	Pure white self (WW)	1936		Chadwick	Winnipeg
SNOWY BUTTERFLY	TB	Pure white self (WW)	1946	n	Craigie	Toronto
SOUTHERN UNION	SPX	Red-purple self	2007		Huber	Laval
SOUTHERN WANDERER						
SPICY TWIST	VIR	Blue self	2002		Huber	Laval
SPIRIT GUIDE	TB	Copper bicolour	1995		Flint	Victoria
SPIRIT GUIDE	SDB	Yellow blend	2003		Chapman	Guelph
SPLITFIRE *	(1st) TB	Md.red, yellowish-toned self (R4M)	1941	n	Groff	Simcoe
SPLENDID COMPANION						
	SPX	Violet self	1998	n	Huber	Laval
SPRING PARFAIT	SDB	Pink blend	2003		Chapman	Guelph
SPRING SIGNAL	IB	Chartreuse yellow/maroon	1959	1	Zurbrigg	Kingston
SPRING SURPRISE	SPX	Pinkish blue self	1998	n	Huber	Laval
STEP IN	SPX	Violet/violet blue	2007	n	Huber	Laval
STRANGE BUTTERFLY	SPX	Violet bitone	1998	n	Huber	Laval
STRANGE FANASTY	SPX	Purple bitone	1998	n	Huber	Laval
STYLED MODESTY	SPX	Aster/amethyst-violet.	1998	n	Huber	Laval
SULTAN'S ARMOR	BB	Orangey-brown self (O1)	1953		Edmison	Brighton
SULTAN'S CAPITOL	TB	Reddish violet self (V1)	1957		Edmison	Brighton
SULTAN'S HONEY	TB	Yellow bitone	1999		Chapman	Guelph
<i>Sultan's Robe</i>	TB	(not recorded)	1953	NR	Edmison	Brighton
SUMMER FROST	TB	Icy blue self	1986		McMillen	Norwich
SUMMER RECALL	SDB	Blue/yellow	2003		Chapman	Guelph
SUMMER REVELATION	SPX	Violet-blue/violet	2007	n	Huber	Laval
SUMMER REVIEW	SPX	Violet blue self	1999	n	Huber	Laval
SUMMONED SPIRIT	SDB	Greyish yellow blend	2002		Chapman	Guelph
SUN CASCADE	SP	Yellow self	1992	10	Huber	Laval
SUNDOG	TB	Md.yellow, yellow-toned self (Y4M)	1938	n	Groff	Simcoe
SUPER BLANC	SIB	White self	2003		Dumas-Quesnel,	Laval

SUPER X	TB	Md. yellow, yellow-toned self (Y4M)	1941	Groff	Simcoe
SWEET TANGO	SP	Violet bicolor	1992	Dumas-Quesnel,	Laval
SYMPHONY IN BLUE	TB	Md. blue, blue-toned self (B1M)	1927	Groff	Simcoe
TAKU	TB	Pure white self (WW)	1945	Craigie	Toronto
TAN LINES	SDB	Yellow blend	2005	Chapman	Guelph
TANGERINE TREAT	SDB	White & orange	2000	Chapman	Guelph
TELL STAR	TB	Dp. yellow	1975	Barker	Richmond Hill
TEMPLE BELLS * (1st)	TB	Lt. blended (sq.) red-toned self (S7L)	1941	Groff	Simcoe
TENUE ROYALE	SPX	Beetroot purple self	1998	Huber	Laval
TICKLE ME	MDB	Coral self	1998	Chapman	Guelph
TIMMY'S PINK	TB	Lt. apricot-pink (O1P)	1959	Rolph	Weston
TOP HAT * (1st)	TB	Md. blended (sq.) red-toned self (S7M)	1941	Groff	Simcoe
TOP PICK	SPX	Violet self	1998	Huber	Laval
TORANDA	TB	Dk. yellow, yellow-toned self (Y4D)	1946	Bauckham	Toronto
TRADE WINDS * (1st)	TB	Md. pinkish-toned white bitone (W9M)	1941	Groff	Simcoe
TRADER HORN	TB	Dk. red, bluish-toned bitone (R3D)	1937	Groff	Simcoe
TRAIL OF '98	TB	Dk. yellow, yellow-toned self (Y4D)	1937	Groff	Simcoe
TREMBLANT SPIRIT	SPX	Violet bitone	2002	Huber	Laval
TROPIC NIGHT	SIB	Blue, blue-toned self (B1D)	1931	Morgan	Montreal
TUNDRA	TB	Blue, blue-toned self (B1D)	1945	Cousins	London
TUNIS	TB	Lt. pinkish-red self (R7L)	1943	Webb	Toronto
TWILIGHT CLOUD	TB	Violet bitone	2000	Chapman	Guelph
TWIST OF TWILIGHT	SDB	Dk. violet bitone	2001	Chapman	Guelph
TYPHOON	TB	Md. red, blue-toned self (R1M)	1938	Groff	Simcoe
URSA MINOR	TB	Blue, blue-toned self (B1L)	1941	Groff	Simcoe
VALENTINO GAGNON	TB	Yellow & lilac	2007	LeBrun, St. Roch des	
VANDA	TB	Blue, blue-toned self (B1M)	Aulnaies		Ingersoll
VANDABETH	TB	Violet blue self (B1)	1945	Miles	Ingersoll
VEINED BANNER	SPX	White self	1952	Miles	Laval
			1998	Huber	



VERA HAYES	CA	Lavender	1990	Miller	Duncan
VESPER	TB	Lt. yellow, yellow-toned self (Y4L)	1945	Cousins	London
VICE REGAL	TB	Dk. reddish-toned blue bitone (B7D)	1941	Groff	Simcoe
Violet Cascadian	TB	Violet ?	--	White	Summerland
VIOLET DELIGHT	TB	Lt. Red-violet self (RV1F)	1967	Laur	Dunville
VIOLET GRACE	TB	Aster-violet self (V1D)	1955	Wadland	Samia
VIOLET MINUET	SP	Violet blue bicolor	1992	Dumas-Quesnel, Laval	
VLAMINICK	SP	Violet-blue/Reddish purple	1992	Dumas-Quesnel, Laval	
VOYAGEUR	TB	Dk. yellow, yellow-toned self (Y4D)	1945	Cousins	London
WABASHINE	TB	Yellow-white self (W4P)	1952	Edmison	Brighton
WALKER ROSS	AB	White	1996	Ross	Burlington
WEDDING GOWN *	TB	(1st) Lt. blended (sq.) red-toned self (S7L)	1920	Crow	Simcoe
WEE GRANNY SMITH	SDB	Green & olive	2005	Chapman	Guelph
WELCOME INTRUDER	SPX	Violet self	1998	Huber	Laval
WEST OXFORD	SDB	Md. yellow, yellow-toned self (Y4M)	1932	Miles	Ingersoll
WEST WIND *	TB	Md. yellow, pinkish-toned bitone (Y9M)	1941	Groff	Simcoe
WHITE BLEACH	SPX	White self	1998	Huber	Laval
WHITECAPS	SIB	Pure white self (WW)	1940	Craigie	Toronto
WHITE CREST	TB	Yellow-white self (W4)	1941	Groff	Simcoe
WHITE FLASH	SPX	Whitish-yellow self	2007	Huber	Laval
WHITE HERALD	TB	Blue-white self (W1)	1959	Rolph	Weston
WHITE KNIGHT	TB	Pure white self (WW)	1938?	Saunders	London
White Rabbit	TB	White?	--	NR	Weston
WIGWAM	TB	Lt. yellow, yellow-toned self (Y4L)	1941	Groff	(RBG)
WINSOME *	TB	Md. red, blue-toned self (R1M)	1926	Brethour	Simcoe
WINTERTIME	TB	White self (W1)	1955	11 Chamberlain	Toronto
WITCH'S CAULDRON	SDB	Violet & yellow	2002	Chapman	(California)
WIZARD OF HOPE	SDB	Violet & tan	2001	Chapman	Guelph
W. J. MOFFAT	TB	Dk. yellow, pinkish-toned self (Y8D)	1946	Miles	Guelph
					Ingersoll

YELLOW CAP	TB	Dk.yellow, yellow-toned self (Y4D)	1941	n	Groff	Simcoe
YELLOW JACKET	TB	Md.yellow, yellow-toned self (Y4M)	1941	n	Groff	Simcoe
Yellowstone *	(2nd) TB	Dk.yellow, yellow-toned self (Y4D)	(1938)	NR	Brethour	Toronto
Youkan	SIB	Dk.blue, blue-toned self (B1D)	1938		Preston	Ottawa
Yucan	SIB	Md.blue, blue-toned self (B1M)	(1943)		Preston	Ottawa

## NOTES:

\* An asterisk after the iris name indicates the variety is considered obsolete by the AIS.

- 1: Hybridized in Canada, but introduced in the USA.
- 2: Hybridized in Canada but introduced in the USA; RBG I.D. tag has "Virginia".
- 3: Hybridized in Canada but introduced in the USA; RBG I.D. tag has "Indiana".
- 4: Hybridized in Canada by Edmison, but RBG I.D. tag has "Zurbrigg, Indiana." .
- 5: Data taken from the I.D.tag at the RBG.
- 6: RBG I.D. tag has "England".
- 7: RBG I.D. tag has "Washington" (state).
- 8: RBG I.D. tag has the hybridizer's name mis-spelled as "Kimmer"
- 9: RBG I.D. tag has a registration date of 1942.
- 10: RBG I.D. tag has a registration date of 1996.
11. May have been hybridized in Ontario; introduced in California.
12. Mentioned by J.C.Bennett of Victoria, B.C.
13. Original spelling of the variety changed.
14. Named 'Pirate' before 1930 before being registered as ALGONQUIN in 1931.

# CANADIAN IRIS

Alphabetically by Iris Name, 1896 to 2008

from CANADIAN HYBRIDIZERS compiled by Don McQueen and Chuck Chapman.

## Abbreviations:

Colour column - Descriptions are general guides ONLY - detailed descriptions are found in the AIS registration Check Lists.  
(bracketed codes)= Colour classification codes used by the AIS prior to 1959.

Lt.= Light      Md.= MediumDk.= Dark      rev = Standards have darker tones than the falls.

sq.= *squaleus* blend

Year column - Bf.= Before

c.= circa (about)

Note column - NR= Not Registered with AIS

n= Not introduced

Numbered notes follow list

NAME	TYPE	COLOURS	YEAR	NOTE	HYBRIDIZER	LOCATION
ABITIBI	SIB	Lt.blue, blue-toned self (B1L)	1930		Preston	Ottawa
AFTON WATER	TB	Md.blue, blue-toned self (B1M)	1949	n	Miles	Ingersoll
AIRFORCE BLUE	TB	Md.blue, blue-toned self (B1M)	1941	n	Groff	Simcoe
AKIRA HORINAKA	SPX	Red-purple/violet	1999	n	Huber	Laval
ALGIERS	TB	Red yellow-toned feathered blend (R5)	1952		Bickle	Toronto
ALGONQUIN	TB	Dk.blended (sq.) blue-toned bicolour (S3D)	1931	14	Crow	Simcoe
ALGONQUIN PARK	AB	Russet blend	1959	2	Edmison-Zurbrigg,	Brighton
ALICE AILEEN	TB	Blue self	1931		Brethour	Toronto
ALLSPICE	TB	Md.blended (sq.) yellow-toned self (S4M)	1941	n	Groff	Simcoe
ALMEDA	TB	Md.pinkish-red self (R7M)	1935	n	Groff	Simcoe
Amber Beauty	TB ?	(not recorded)	--	NR 5	not identified	(RBG)
Amethyst	TB	(not recorded)	bf.1958	NR 5	Winslow	(RBG)
AMYTIS	TB	Lt.yellow, yellow-toned rev. bitone (Y6L)	1942	n	Craigie	Toronto
ANCASTER BLUE RUFFLE						
	TB	Blue bitone	1993		McMillan	Norwich

# 2010 Canadian Iris Society (CIS) Iris Sale:

Provided by Christopher Hollinshead

---

**Sale Date: August 15, 2010**

**W**e welcome you to attend our annual iris sale. Come out, say hello and pick up some really excellent high quality irises at this event. The plants on offer are American Iris Society (AIS) registered and named iris cultivars. Ask us about the iris for sale or feel free to ask iris growing questions and we'll be glad to advise and help.

The CIS Iris Sale is held as a fund raiser for the CIS and the sale is open to the public. Please ensure that the iris brought for the sale/exchange/trade are correctly named AIS registered iris cultivars only please. Donations of sale iris are gladly received.

**Time:** Set-up from 10:00 am (the receiving and sorting and pricing of the sale iris) The CIS relies on the generous donations from members of registered AIS iris varieties for this CIS iris sale. Your support of the CIS is appreciated. There is an exchange/trade of irises from 12:30 to 1:00 pm (This part is for CIS members only.) The public sale starts at 1:00 pm

**Location:** Royal Botanical Gardens (RBG), 680 Plains Road West, Burlington, Ontario. RBG main building, rooms 3 and 4. Contact: Ed Jowett, 1960 Side road 15, RR#2 Tottenham, ON L0G 1W0 Phone: 905-936-9941 | e-mail: jowettfarm@copper.net CIS website: www.cdn-iris.ca

## **CIS Iris Sale – Iris Needed! – Can you dig it?**

*Originally from July 1996 CIS Newsletter/adapted to 2010 version*

Some of our CIS members may not be aware of how to donate their extra iris to the Society for our sales. We really need your help to make the CIS Iris Sale a success and this gives you a chance to have your iris go to a good home, rather than into the composter!

**When to dig:** Iris can stay out of the ground safely for quite a while, since their roots are fleshy and they hold water in the rhizome as a reserve. The size of



the roots and rhizome gives a fairly good indication of just how long they will survive out of ground. Siberians have thin roots and rhizomes and do not tolerate such abuse, but tall bearded are much more forgiving. You could plan on digging a few days to nearly a week in advance for our sale with no ill effect.

**How to dig:** A garden fork is the tool of choice, since it does no damage to the roots. Lift the clump out of the ground, and shake or wash away the excess soil, so you can see the underground structure. Then identify the rhizomes with healthy leaves and roots, and cut them off of the parent plant.

These new parts are what we call divisions. The old bits without leaves and with dried up, dead roots can be thrown out. You should be looking at quite a pile of divisions anyway if you started with a mature (three year old or more) clump. It should be painless to donate a few of those divisions for sale at this point, since you likely don't have enough soil and friends to deal with them all!

**Labeling:** This is an important step. Each division should have its correct AIS registered name put on it at this point. If you dig more than one clump before dividing them, you need to keep track of them before this point, since they look alike when they're sitting there on your lawn! A permanent black marker is the easiest; just write directly on the leaves. (Sharpie fine point permanent marker ►



works well) If for some reason you only know the color, don't try to invent a name, just call it "pink" or "blue" as appropriate. If the irises are headed for the sale table, no need to price them at this point. The helpers at the sale will mark them with the appropriate sale prices.

**Wash n'dry:** A nice touch is to hose them down, and let them dry. Put them in a cardboard box or paper bag in the garage until the day of the sale. Hot temperatures and plastic bags will cause sweating, which is not a good thing!

**Bring 'em on in:** If you have any questions about how to do this or when and where the sale is, please call the people listed as event contacts. They are all really nice and would be glad to help. It is best to bring the plants in well before the sale so they have time to be priced and sorted out onto the sale tables. We'd be glad to meet you, and you're welcome to stay to help or look around if you are bringing in plants.

**Thanks!**

**Editors Note:** Please have plants in by 11.00 A.M. at latest. Someone will be there by 9.00 A.M.



# Join the American Iris Society

\$25.00 one year, \$60 for three years

Send payment to:

**Tom Gormley** - AIS Membership Secretary  
**205 Catalonia Avenue**  
**P.O. Box 177**  
**DeLeon Springs, FL 32130**

Phone and Fax: 386-277-2057  
Email: [aismemsec@irises.org](mailto:aismemsec@irises.org)  
or visit [www.irises.org](http://www.irises.org) for more details



# CANADIAN IRIS SOCIETY BOARD MEETING

Sunday, April 18, 2010

1:30 p.m. at Royal Botanical Gardens



**President's Welcome:** Ed Jowett

**Members in attendance:** Ed Jowett, Harold Crawford,  
Ann Granatier, Bob Granatier, Alan McMurtrie, John Moons,  
Pat Loy

**Regrets:** Kennedy, Gloria McMillen

**Ed opened the meeting @ 1:40 p.m.**

## 1. Adoption of Agenda:

**MOTION:** To adopt the Agenda

Pat Loy/Harold Crawford ..... **CARRIED**

## 2. Adoption of Minutes from January 10, 2010:

**MOTION:** To adopt the Minutes

John Moons/ Al McMurtrie ..... **CARRIED**

## 3. Business Arising from the Minutes:

a) **Results of the vote to amend the Constitution** 15 of 92 members responded  
YES, plus 5 YES votes from board members is 20 with one member  
disagreeing verbally.

\* Changes to the constitution are therefore accepted.

b) **Mid-America offer:-** The irises offered will be published on the CIS website and  
published in the bulletin Current catalogue prices will be listed and irises  
offered at 50% discount. Any remaining Irises will be offered at the August  
Sale. Shipping fee will be \$11.00 for 1-9 rhizomes.

\* Must order and pay by July 1st.

c) **Iris Sale/ Auction:-** Bob will prepare 4X6 photos of leftover iris to promote at the  
sale. Cost approximately 21 cents.

d) **Voting officers:-** President Ed Jowett, Vice President; John Moons, 2nd Vice;  
Harold Crawford, Secretary (temporary) Ann Granatier, Treasurer; Bob  
Granatier. Directors: Nancy Kennedy, Pat Loy, Al Mc Murtrie, Christopher  
Hollinshead (membership and website)

e) **Flower Show:-** Correct date is June 13, 2010-07-14 Show starts at 11:00 am  
AIS approved show, Board allowed \$100.00 for food and drinks/ pot-luck  
for salads and desserts. Judges may include Ken Viner, Sylvia and Chuck  
Chapman, Sandy and Maureen, Val Saari has declined.

**f) AGM Events:-** Ways to attract more attendees were discussed.

A proposed timetable is:

- 12:45 – 1:00 Bare-root sale
- 1:15 – 1:45 Power point presentation
- 1:45 – 2:00 Door prizes
- 2:00 – 3:00 AGM
- 3:00 – 4:00 Door prizes and extras from share program

#### **4. Treasurer's Report:**

**The March 31st closing balance was \$4,116.73 (see written report for details).**

**MOTION: To accept changes re constitution**

**Bob Granatier/Al Mc Murtrie ..... CARRIED**

#### **5. Reports of the Standing Committees:**

- a) There are 108 members
- b) Newsletter will include the show schedule
- c) London region will hold their show on June 6 at McMillens
- d) AIS report: NIL
- e) RBG garden Show, Board Members set a schedule to attend the booth to promote membership.

#### **6. Board Meetings:**

The Board (after discussion) decided on future dates for 2010 Board Meetings as follows – all to be held in the Library Room (2<sup>nd</sup> floor) RBG from 1:30 to 4:00 p.m. except as noted.

- Sunday, April 18
- Sunday, July 18
- Sunday, August 15 – combined AGM and Annual Plant Sale – 10 a.m. to 3 p.m. Rooms 3&4.
- Sunday, October 17
- Sunday, January 16, 2011

#### **7. Correspondence: Nil**

#### **8. New Business: Nil**

#### **9. Adjournment:**

**MOTION: To adjourn at 3:30 pm**

**John Moons ..... CARRIED**

**NEXT MEETING: Sunday, July 18, 2010 @ 1:30 p.m. in the RBG Library**



# Musings from Manitoba

(By B. J. Jackson)



Another interesting growing season on the prairies. Way too much water! Several have had upwards of 150 mm of rain, hail storms, wind storms, and even flooding to contend with in just a few months. My area of the province in the south west corner has skirted a good deal of the nasty weather but it has still been more than enough. And that after the weather gurus predicted a drought year! Alberta has had more rain so far this year than in the previous two combined. They had anticipated another drought again this year. And then there is Saskatchewan, inundated with upwards of 80 to 100 mms in just a single day. That would be bad enough but it has happened over and over in various parts of the province. There was even a washout of the Trans Canada Highway necessitating a 200 km detour!

It started way too early with warming temps and all the snow melted. Iris that came out of this looked good. Then the temperature plummeted, it snowed a few times and then it rained like it would never stop. The results were predictable, lots of heaving and rot. Just getting out in the garden required mud boots and even then you couldn't be sure you wouldn't be sucked in.... literally. Fully one-half of the varieties of whatever class did not bloom this year, and several were totally lost— mostly from rot.



The Growing to Show workshop on May 30<sup>th</sup> was well attended despite the weather. **El Hutchison** and her assistant (yours truly) in mud boots and with umbrellas in hand went through the process of selecting stems to exhibit, cutting, grooming, and presenting them for judging at the home of CWIS member **Sandy Eggertson**. Seventeen attendees spent 3 hours listening and watching and afterward enjoyed a light lunch and something to warm us up. And, of course, as soon as we were done and on our way home, the sun came out. Because of the positive response, we are looking forward to doing another workshop next year, topic to be determined. ▶



Despite the weather, the Can-West Iris Society held its third annual show in Winnipeg on June 13<sup>th</sup>. There was the worry that there wouldn't be anything left (or of exhibition quality) to show, but our members came through and we had a wonderful day with many classes we haven't seen exhibited, or at least not in the numbers they appeared. It was doubly sweet (and nerve wracking, too) in that this was the first show in which El Hutchison and I judged on our own with Apprentice **Ed Czarnecki** assisting. There were 106 stems representing all the bearded classes as well as several species by 12 exhibitors. Show results follow:

- Best Stem in Show:  
B. J. Jackson for TB Humoresque
- AIS Silver Medal and Certificate: Brenda Newton, 14 red ribbons
- AIS Bronze Medal and Certificate: B. J. Jackson, 11 red ribbons
- Best Canadian Hybridized Stem in Show (sponsored by Chuck Chapman Iris):  
B. J. Jackson, SDB Blueberry Tart
- Best Historical Variety Stem in Show (sponsored by OnRussell Gardens):  
B. J. Jackson, TB Humoresque (Keppel, 1961)
- CWIS People's Choice Award (voted by the public visiting the show):  
Diana Dhaliwal, TB Supreme Sultan



CWIS 2010 – Best Stem in Show:  
B. J. Jackson for TB Humoresque

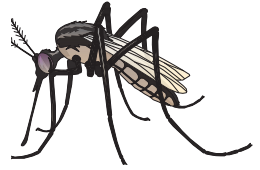
### CWIS Section Awards:

- Section A – MDB: not awarded
- Section B – SDB: Brenda Newton with Death by Chocolate
- Section C – IB: B. J. Jackson with Spiked
- Section D – MTB: David Hutchison with Ace
- Section E – BB: not awarded
- Section F – TB: Brenda Newton with Cranberry Ice
- Section G – Non-bearded: E. Hutchison with I. variegata form Reginae
- Section H – Collections: not awarded
- Section I – Seedlings: not awarded
- Section J – Historic: B. J. Jackson with Humoresque (Keppel, 1961)



The day was warm and sunny, literally the first such day in weeks but that did not stop people from coming out and as a result the sale table and raffle tickets were a hive of activity.

I was able to make a trip to Edmonton, AB to visit a member's garden the first weekend in July. Same zone rating as Brandon MB but it was like a different world. They had median iris blooming as well as tall bearded. The Siberians were just starting whereas mine were finished or nearly so. They, too, were too wet but cool. I could have stayed there longer because there was no humidity and very few mosquitoes. I swear the Manitoba mosquitoes could have carried a person away—they are so numerous and huge this year.



The gardens have dried out somewhat now and I have been able to get at the weeds (there were some thistles more than 2 feet tall) that had been previously inaccessible. Now begins the process of deciding what needs to be moved and where to move it, what



Brenda (B. J.) Jackson had 14 first place ribbons at the CWIS in 2010



CWIS 2010 – Best Historical Variety Stem in Show (sponsored by OnRussell Gardens):  
B. J. Jackson, TB Humoresque (Keppel, 1961)

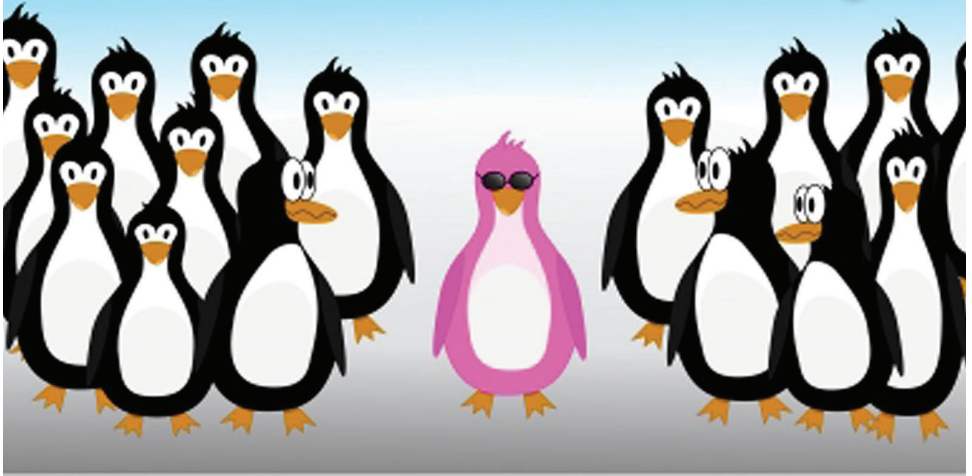
to get rid of that didn't or hasn't performed well in the previous few years and try to figure out where to plant out the previous year's seedlings. Something has got to go to make room. Another chore will be removing about 50 iris from a garden I had maintained but am now unfit for growing anything. That garden is in a medical exclusion zone in the city and I am not allowed to use any form of herbicide, pesticide, or fungicide in it. So, I'll have to find another home for them. I'm thinking the university gardens may need more iris perhaps. Better to save them from the creeping bellflower (*campanula rapunculides*) than lose them!

I hope you all enjoy the rest of the summer, wherever you are. Guess I'd best get to work now.

To contact me, please write [jacksonb@mts.net](mailto:jacksonb@mts.net). I'd love to hear from anyone interested in talking iris!



# Individuality!



- Logos
- Posters
- Graphics
- Web Sites
- Brochures
- Magazines
- Newsletters
- Ad Layouts
- Annual Reports
- Business Cards
- Photography
- Photo Editing

***Let Eclipse help you to  
stand out from the crowd.***



Eclipse Technologies Inc.  
www.eclipse.ca • 416-622-8789 • 1-877-644-4482



# Remembering Verna Laurin

By Terry Laurin

---

It is with great sadness that I report the passing of Verna Laurin on May 21, 2010 at the age of 87.

Verna was a member of the Canadian Iris Society (CIS) for over fifty years, serving as their secretary for over 20 of those years. She was also a charter member of the Toronto Region Iris Society formed in 1962. (Later became TORIS) She was a faithful participant in both their annual flower shows and auctions. It was not unusual for her to go to a Toronto event on Saturday then go to church Saturday evening so she could drive to Hamilton on Sunday to participate in their CIS event. She won many trophies with her irises at shows, and usually ended up with an iris in the “Court of Honour”. She was a great friend to all “irisarians” as she liked to share information and her garden. She also promoted irises through numerous speaking engagements and public displays. And I can’t forget to mention the tasty treats she baked for various meetings and events.

As a member of the American Iris Society (AIS) for over fifty years, Verna served as AIS Region 16 RVP from 1985 to 1987. She became an AIS Garden Judge and served for almost thirty years before she retired in 2003. She religiously attended the annual AIS National Convention. She felt that attending conventions was important in order to stay up-to-date on new iris introductions. In later years she liked to reminisce with stories of the people she came to know; people like **Sid DuBose, Joe Gatty, Ben Hager, Keith Keppel, David Sindt** and a young **Thomas Johnson**, to name a few.

Her house was decorated with different kinds of iris paraphernalia; everything from teacups to framed pictures. If you knew Verna, you knew that these items had to pass a strict test, i.e., the iris had to be true to form. This probably came from her years of judging irises on the show bench and in the garden.

In 2009 the TORIS Board agreed it was time to recognize Verna’s contributions to the club. At their annual flower show that year, the *Verna Laurin Historic Iris Award* was presented to the historic iris displaying the best characteristics in its class. This category was selected because Verna was a charter member of the Historic Iris Preservation Society (HIPS) and she was partial to historic irises.





Terry and Verna Laurin

Despite moving into a Seniors Residence in 2008, Verna's love of iris never diminished. The residence allowed her to plant irises in their garden which she admired daily throughout iris season. She would also visit my garden so she could continue to vote in the various iris symposiums. In fact one week before her passing she was in my garden making notes on the irises she felt deserved her vote. She was a true iris lover to the end!





# GARDEN NOTES...

---

## ***Reported Missing:***

Does anyone know the whereabouts of these people? Their news bulletins were returned undeliverable, and we would like to forward them.

If you know where they have moved to, please tell us. You are asked to report to C.I.S.

**Colleen Tuckwood**

Ilderton, ON

**Peter Atkin**

Omeme, ON

Diane Wyman

London, ON

(found)

**John Vogt**

Sooke, BC

(It seems that the postal service is getting fussy in rural areas.)

---

## ***Walker Ross Award:***

This is an annual award presented to a person who has given outstanding effort and performance to the Canadian Iris Society. If you know of someone you feel is deserving of this award; please send in your nomination to our secretary.

---

## ***Canadian Iris Society:***

You are invited to join the Canadian Iris Society. Membership in the CIS is open to all persons interested in irises regardless of skills or experience. New members are welcome. Join us at our next regular event, the annual iris rhizome sale on Sunday, August 15, 2010 at the Royal Botanical Gardens, Plains Road West, Burlington, ON. Visitors (non-members) are very welcome at this sale/auction event. This is an opportunity to obtain some of the same beautiful iris on display here today for your own garden. We look forward to seeing you again. Official membership applications and other information will be available at the show or on the official CIS website: [www.cdn-iris.ca](http://www.cdn-iris.ca).

**CIS Officers:** President: **Ed Jowett** 905-936-9941 <[jowettfarm@copper.net](mailto:jowettfarm@copper.net)>

Membership: **Chris Hollinshead** 905-567-8545

3070 Windwood Drive, Mississauga, ON L5N 2K3

---

**cis website**  
**[www.cdn-iris.ca](http://www.cdn-iris.ca)**

up to date information on CIS activities and many useful links to other iris sites and information

# Coming Events and Dates to Remember

The following dates have been reserved  
with the RBG co-coordinator **Pam Bowen**:

## **Executive meetings**

- Sunday October 17, 2010  
1:30 – 4:00 Library board room 2nd floor
- Sunday January 16, 2011  
1:30 – 4:00 Library board room 2nd floor

## **The AGM and Plant Sale**

will be held on Sunday August 15th, 2010  
from 9:00 am to 3:00 pm Rooms 3 & 4

- Set up to start 9:00 am
- Member's trade 12:45 pm
- Open to Public 1:00 pm
- Demo 1:15 pm
- AGM approx. 1:45 pm

Please note your calendars.

## **CIS Membership Message**

Not sure of your Canadian Iris Society (CIS) membership term?  
Check your mailing label of the CIS newsletter for your current  
CIS membership term dates. If you receive the electronic version  
of the CIS Newsletter and you wish to know this information  
please e-mail the CIS membership chairman at [cdn-iris@rogers.com](mailto:cdn-iris@rogers.com)  
and we will be pleased to advise you.  
Early renewals are always appreciated.

# Canadian Sources for Irises

We provide this listing as a resource for our members and readers. This listing does not necessarily imply endorsement of the businesses by Canadian Iris Society (CIS). The sources listed have paid donations/contributions to help support the society. If you know of someone who should be added to the list please send the information to the editor. The listings in BOLD are members of the CIS

## **Chapman Iris**

RR #1 8790 Wellington Road 124,  
Guelph, ON N1H 6H7  
Phone: (519) 856-4424  
Email: [chuck@chapmaniris.com](mailto:chuck@chapmaniris.com)  
Website: [www.chapmaniris.com](http://www.chapmaniris.com)  
On-line or 2010 catalogue: \$3.00

## **McMillen's Iris Garden**

RR1 285112 Pleasant Valley Rd.  
Norwich ON N0J 1P0  
Phone 1-866-468-6508  
Email: [info@mcmillensirisdgarden.ca](mailto:info@mcmillensirisdgarden.ca)  
e-mail or call for Price List

## **Tara Perennial Farm**

123 Concession # 6, R.R.2  
Tara, ON N0H 2N0  
Call for availability/price list  
Marion Kuhl 519-934-3447

## **The Plant Farm**

177 Vesuvius Bay Road  
Salt Spring Island, BC V8K 1K3  
Phone: 250-537-5995  
Email: [hello@theplantfarm.ca](mailto:hello@theplantfarm.ca)  
Website: [www.theplantfarm.ca](http://www.theplantfarm.ca)  
On-line catalogue

## **Trails End Iris Gardens**

3674 Indian Trail, RR#8  
Brantford, Ontario N3T 5M1  
Phone: 519-647-9746  
Email: [bob@trailsendiris.com](mailto:bob@trailsendiris.com)  
Website: [www.trailsendiris.com](http://www.trailsendiris.com)  
On-line catalogue

## Liaisons and Regions

### **British Columbia Iris Society (BCIS)**

Ted Baker, 185 Furness Rd., Salt Spring Island, BC V8K 1Z7  
ph: 250-653-4430 [www.bc-iris.org](http://www.bc-iris.org)

### **Can-West Iris Society**

B.J. Jackson, 2421 McDonald Avenue, Brandon, MB R7B 0A6,  
ph: 204-725-4696 email: [eleanore@mts.net](mailto:eleanore@mts.net)

### **Halton/Peel Iris Society (HAPEIS)**

Chris Hollinshead, 3070 Windwood Drive, Mississauga, ON L5N 2K3  
ph: 905-567-8545 e-mail: [cdn-iris@rogers.com](mailto:cdn-iris@rogers.com)

### **London Region Iris Society**

Gloria McMillen, RR#1 Norwich, ON N0J 1P0  
ph: 519 468-3279 email: [gmcmillen@execulink.com](mailto:gmcmillen@execulink.com)  
Please inquire for membership and group activities.

### **Northern Lights Iris Society (NLIS)**

Virginia Prins, 296 Furby St, Winnipeg MB, R3C 2A9  
e-mail: [inanda1@mts.net](mailto:inanda1@mts.net) [www.nlris.ca](http://www.nlris.ca)

### **Ottawa River Iris Society (ORrIS)**

Maureen Mark, 1077 Guertin Avenue, Ottawa, ON K1H 8B3  
ph: (613) 521-4597 e-mail: [mmark@rogers.com](mailto:mmark@rogers.com)



**Canadian Iris Society**  
**1960 Sideroad 15, RR#2**  
**Tottenham, ON L0G 1W0**



Walker Ross

### **CIS Newsletter**

Published four times a year at  
Canadian Iris Society  
1960 Sideroad 15, RR#2  
Tottenham, ON L0G 1W0

Publication Agreement #41247546